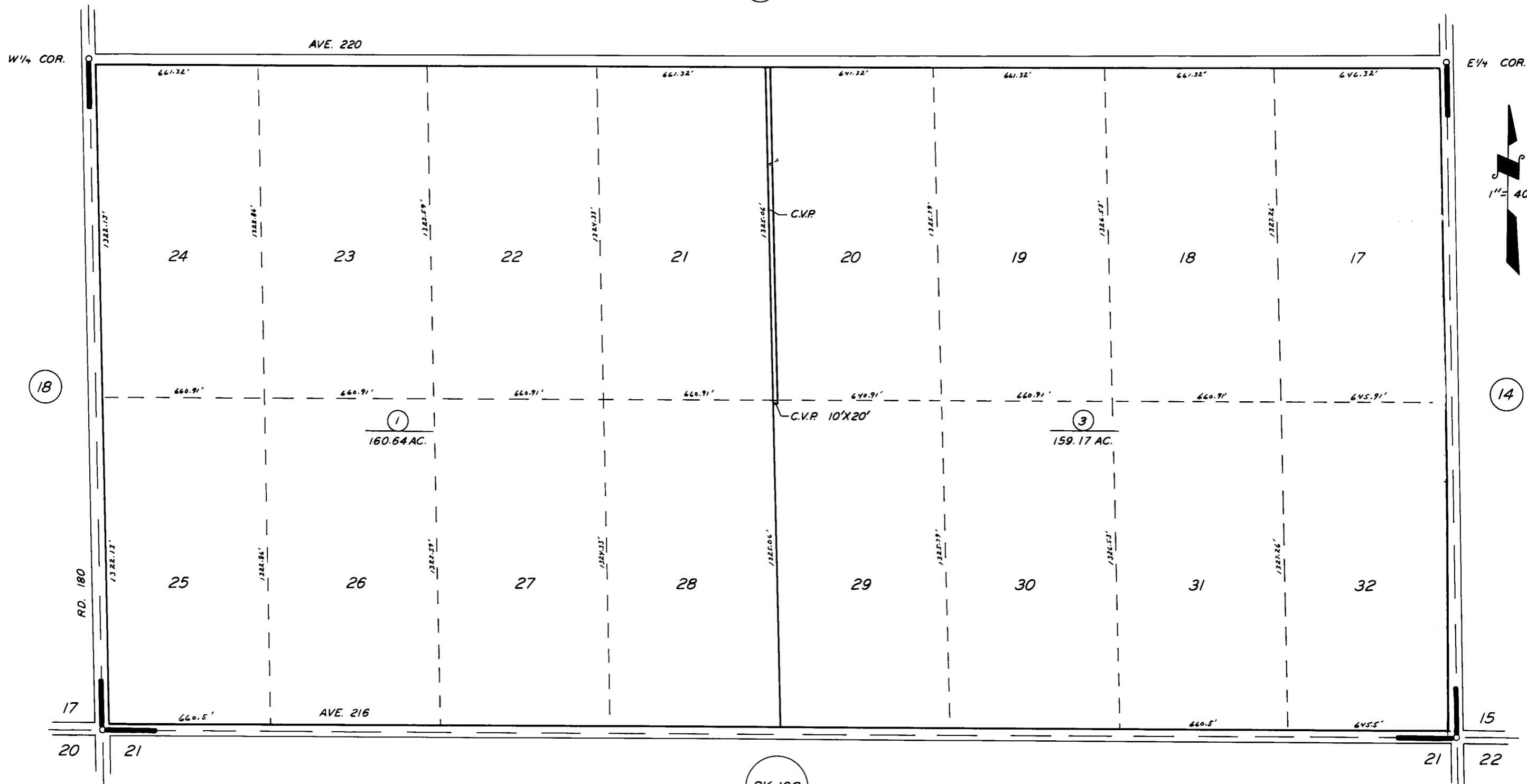


16



18

14

BK. 198

POR. HUMPHREY SUB.

R.M. 10-30

ASSESSOR'S MAPS BK. 197, PG. 15

COUNTY OF TULARE, CALIF.

NOTE — ASSESSOR'S BLOCK NUMBERS SHOWN IN ELLIPSES  
ASSESSOR'S PARCEL NUMBERS SHOWN IN CIRCLES

