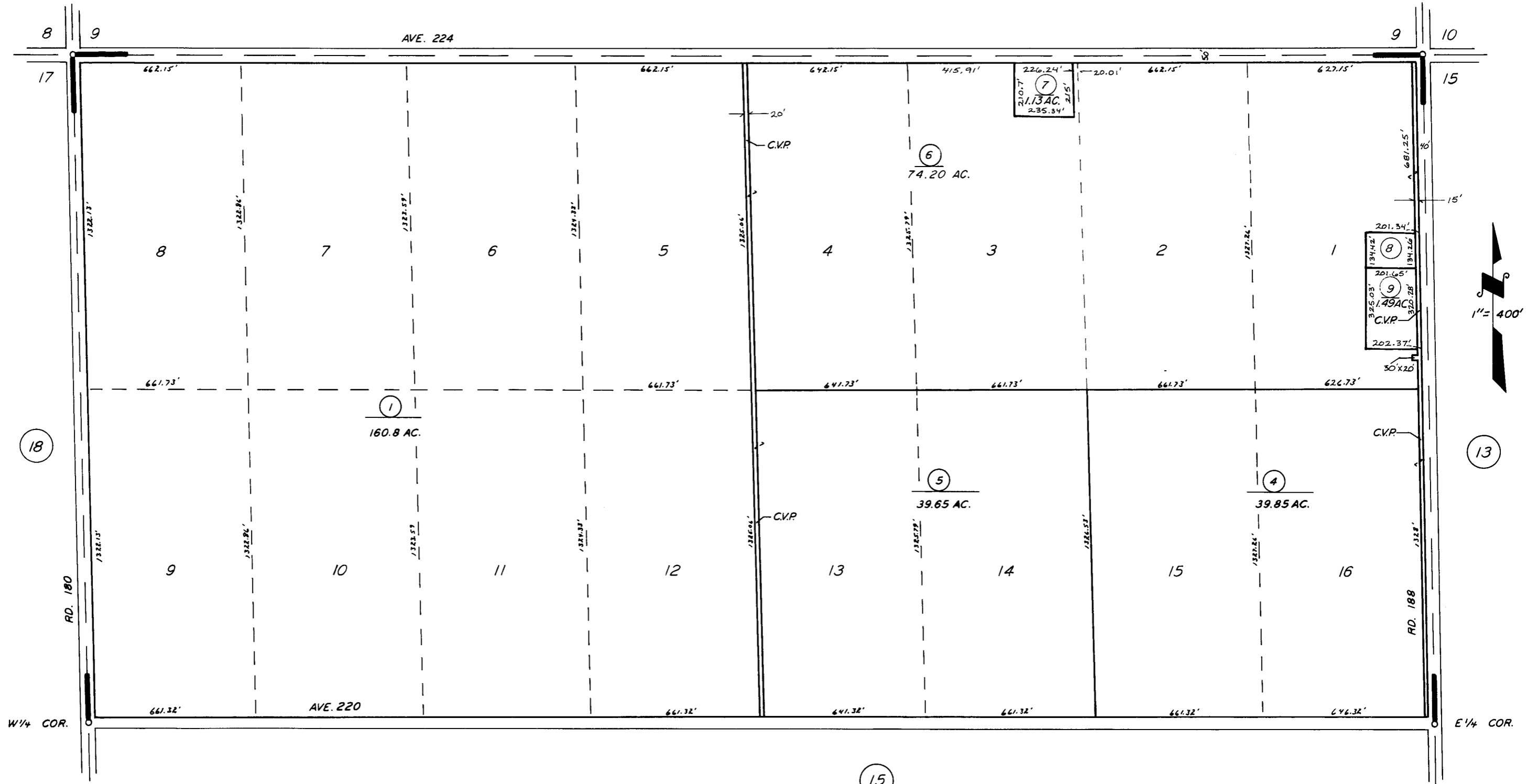


08



POR. HUMPHREY SUB. R.M. 10-30

ASSESSOR'S MAPS BK. 197, PG. 16

COUNTY OF TULARE, CALIF.

NOTE -- ASSESSOR'S BLOCK NUMBERS SHOWN IN ELLIPSES
ASSESSOR'S PARCEL NUMBERS SHOWN IN CIRCLES

