

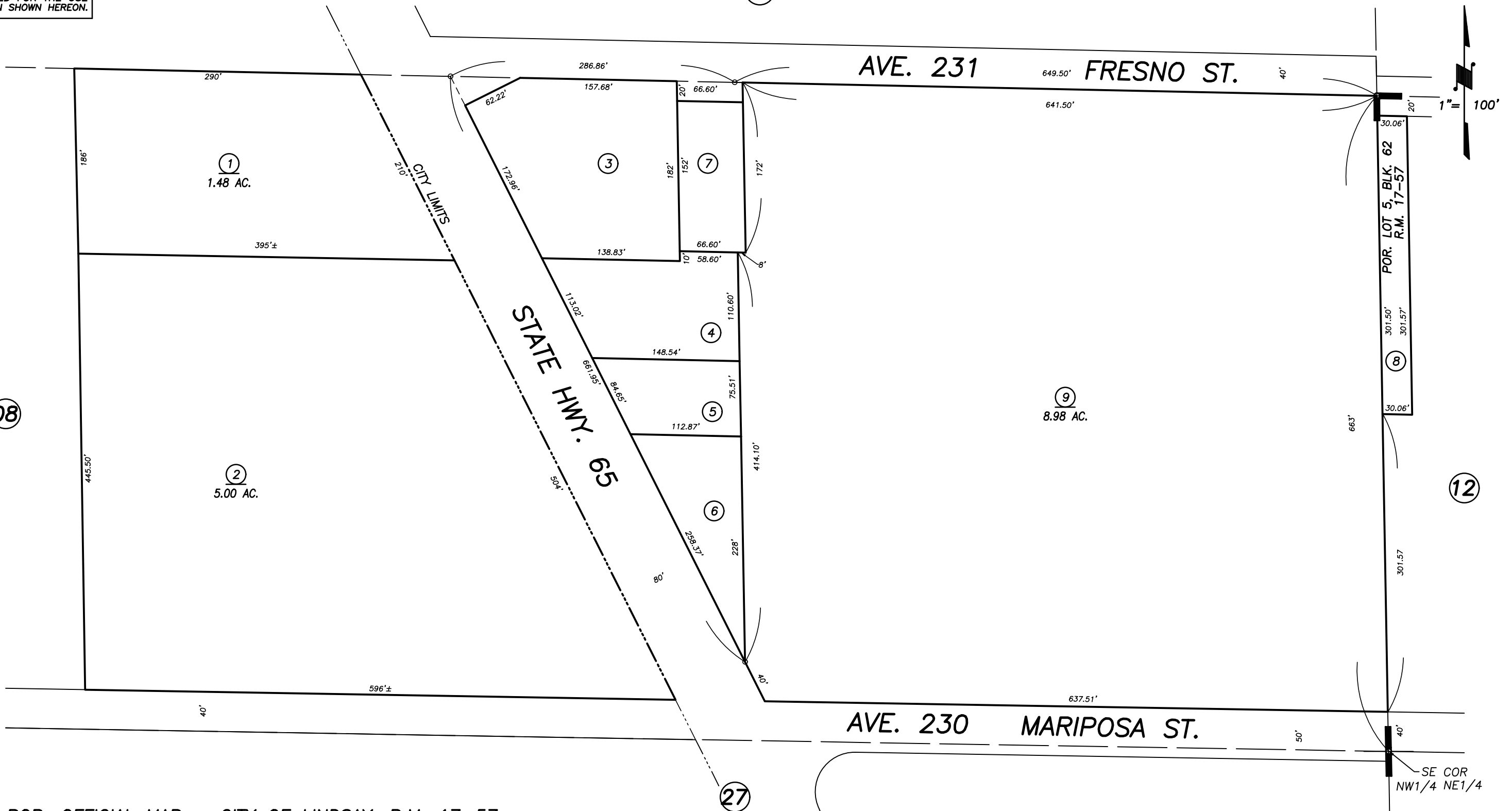
DISCLAIMER
 THIS MAP WAS PREPARED FOR LOCAL PROPERTY ASSESSMENT PURPOSES ONLY AND THE PARCELS SHOWN HEREON MAY NOT COMPLY WITH STATE AND LOCAL SUBDIVISION ORDINANCES, AND NO LIABILITY IS ASSUMED FOR THE USE OF THE INFORMATION SHOWN HEREON.

S1/2 OF NW1/4 OF NE1/4 SEC.12, T.20S., R.26E., M.D.B.&M.

Tax Area Codes **199-26**

003-011

108-003



POR. OFFICIAL MAP - CITY OF LINDSAY, R.M. 17-57

CITY OF LINDSAY
ASSESSOR'S MAPS BK. 199 , PG. 26
COUNTY OF TULARE, CALIFORNIA, U.S.A.

NOTE: Assessor's Parcel Numbers Shown in Circles
 Assessor's Block Numbers Shown in Elipses

① 123

2000-0036740	04/18/2002	RJL
REVISION	DATE	TECH