

DISCLAIMER
 THIS MAP WAS PREPARED FOR LOCAL PROPERTY ASSESSMENT PURPOSES ONLY AND THE PARCELS SHOWN HEREON MAY NOT COMPLY WITH STATE AND LOCAL SUBDIVISION ORDINANCES, AND NO LIABILITY IS ASSUMED FOR THE USE OF THE INFORMATION SHOWN HEREON.

N1/2 OF NW1/4 OF NE1/4 SEC.7, T.20S., R.27E., M.D.B.&M.

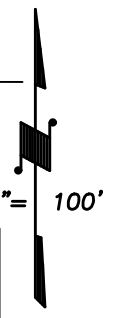
Tax Area Code **205-12**
 003-018

Bk. 201

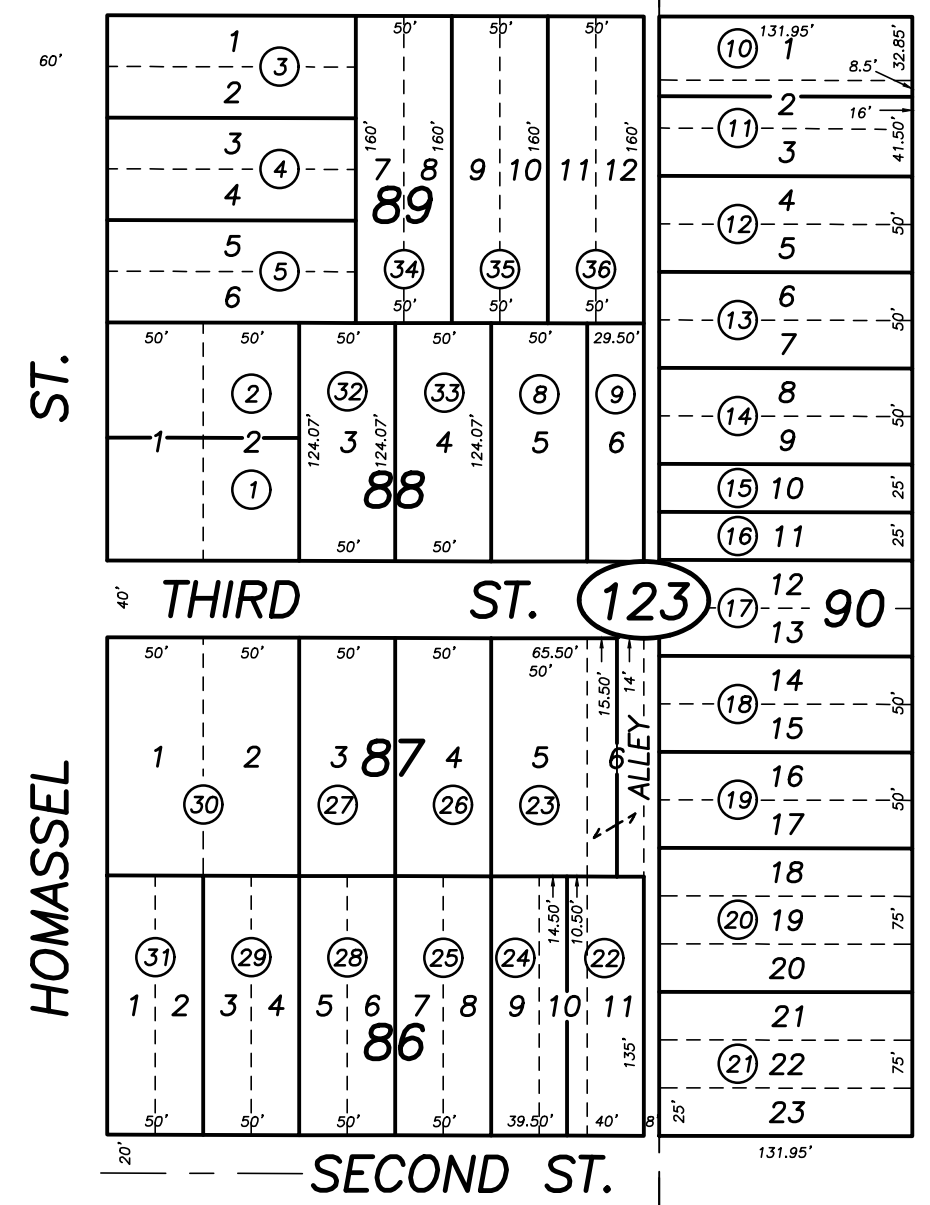
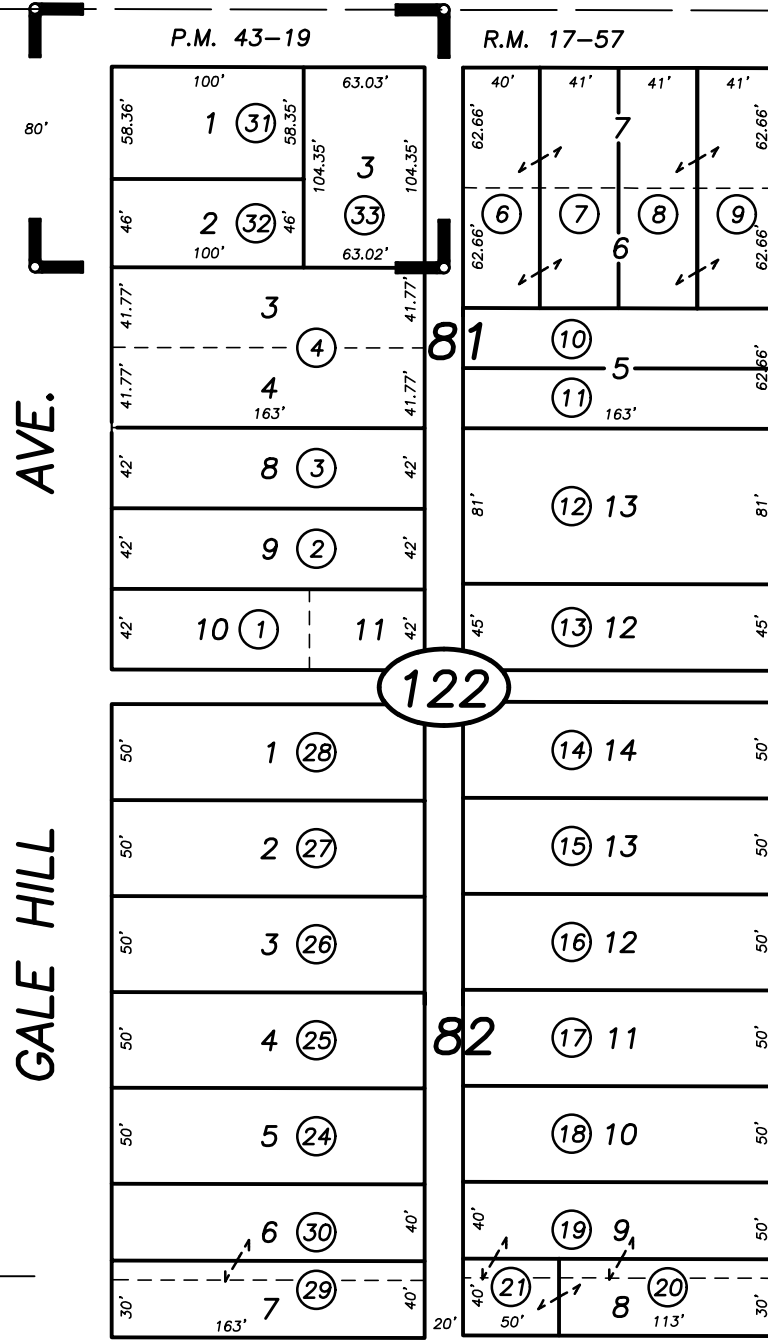
N.1/4 COR.

TULARE AVE.

SEC. 6 N 1/4 COR. NE 1/4
 SEC. 7



BASIS OF BEARINGS:
 P.M. 43-19



1/64 COR.

1/64 COR.

POR. OFFICIAL MAP-CITY OF LINDSAY, R.M. 17-57
 PARCEL MAP NO. 4215, P.M. 43-19

11

CITY OF LINDSAY
 ASSESSOR'S MAPS BK. 205 , PG. 12
 COUNTY OF TULARE, CALIFORNIA, U.S.A.

NOTE: Assessor's Parcel Numbers Shown in Circles
 Assessor's Block Numbers Shown in Ellipses

2003-0048540	07/06/2004	KMS
REVISION	DATE	TECH

123