

DISCLAIMER

THIS MAP WAS PREPARED FOR LOCAL PROPERTY ASSESSMENT PURPOSES ONLY. THE PARCELS SHOWN HEREON MAY NOT COMPLY WITH STATE AND LOCAL SUBDIVISION ORDINANCES. NO LIABILITY IS ASSUMED FOR THE USE OF THE INFORMATION HEREON.

REVISED: 04/10/2014
REASON: 2012-0040705
CAD TECH: ARP

S. POR. SE 1/4 OF NE 1/4 SEC. 7, T.20S., R.27E., M.D.B.&M.

TAX CODE AREA 205-16

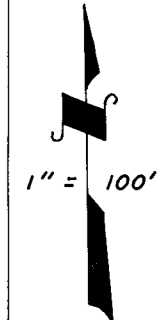
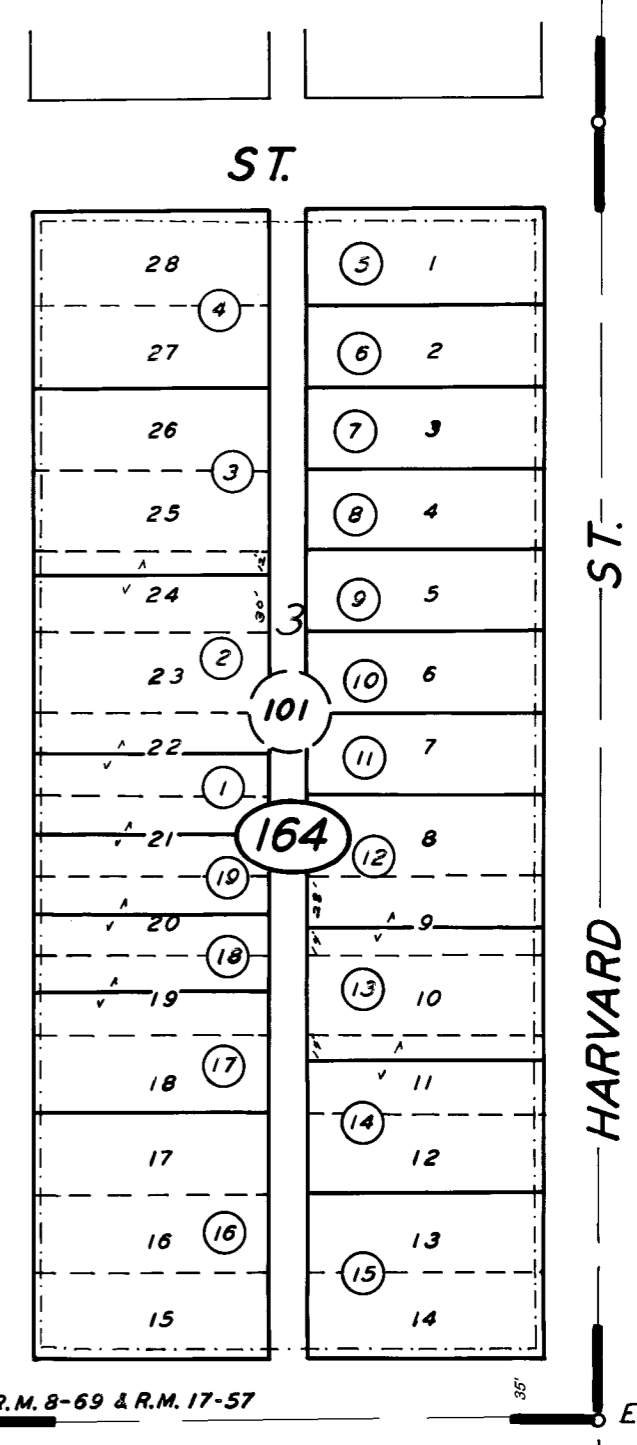
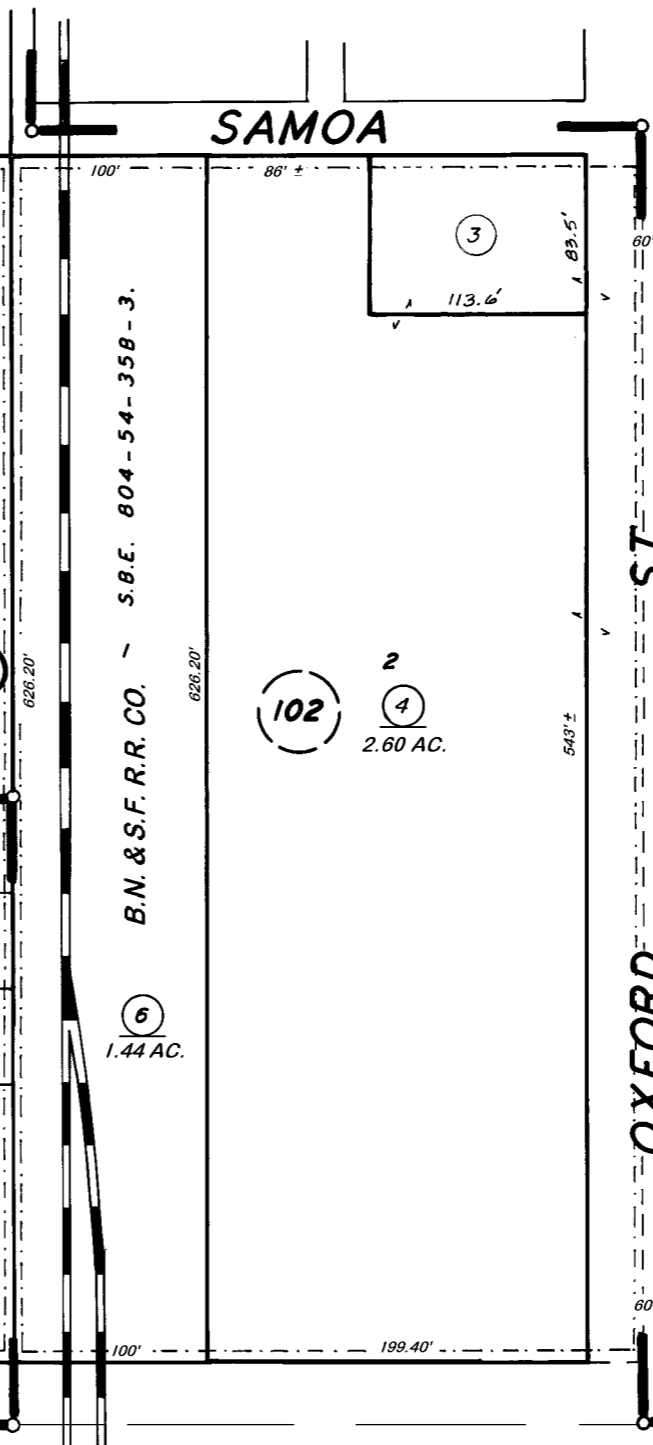
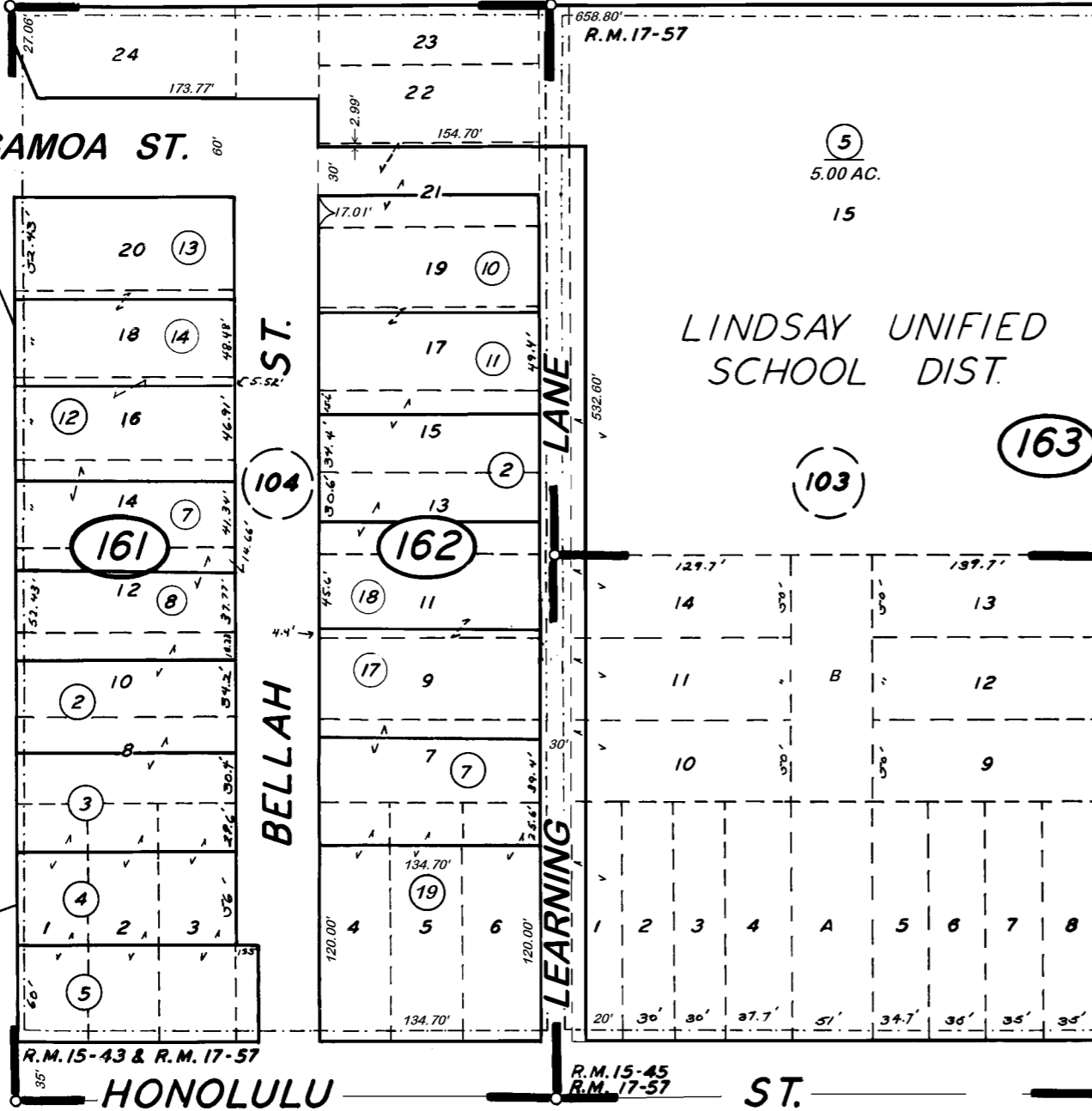
3-000
3-018

HOMASSEL ST.

SAMOA ST.

SAMOA

ST.



BK. 206

HIGH SCHOOL ADD., R.M. 8-69
REED SUB., R.M. 15-43
NATZKE SUB., R.M. 15-45

TOWNSITE OF LINDSAY, R.M. 17-57

BLK. NO'S
BLK. LN'S

CITY OF LINDSAY
ASSESSOR'S MAPS BK. 205, PG. 16.

COUNTY OF TULARE, CALIF.

NOTE - ASSESSOR'S BLOCK NUMBERS SHOWN IN ELLIPSES
ASSESSOR'S PARCEL NUMBERS SHOWN IN CIRCLES

