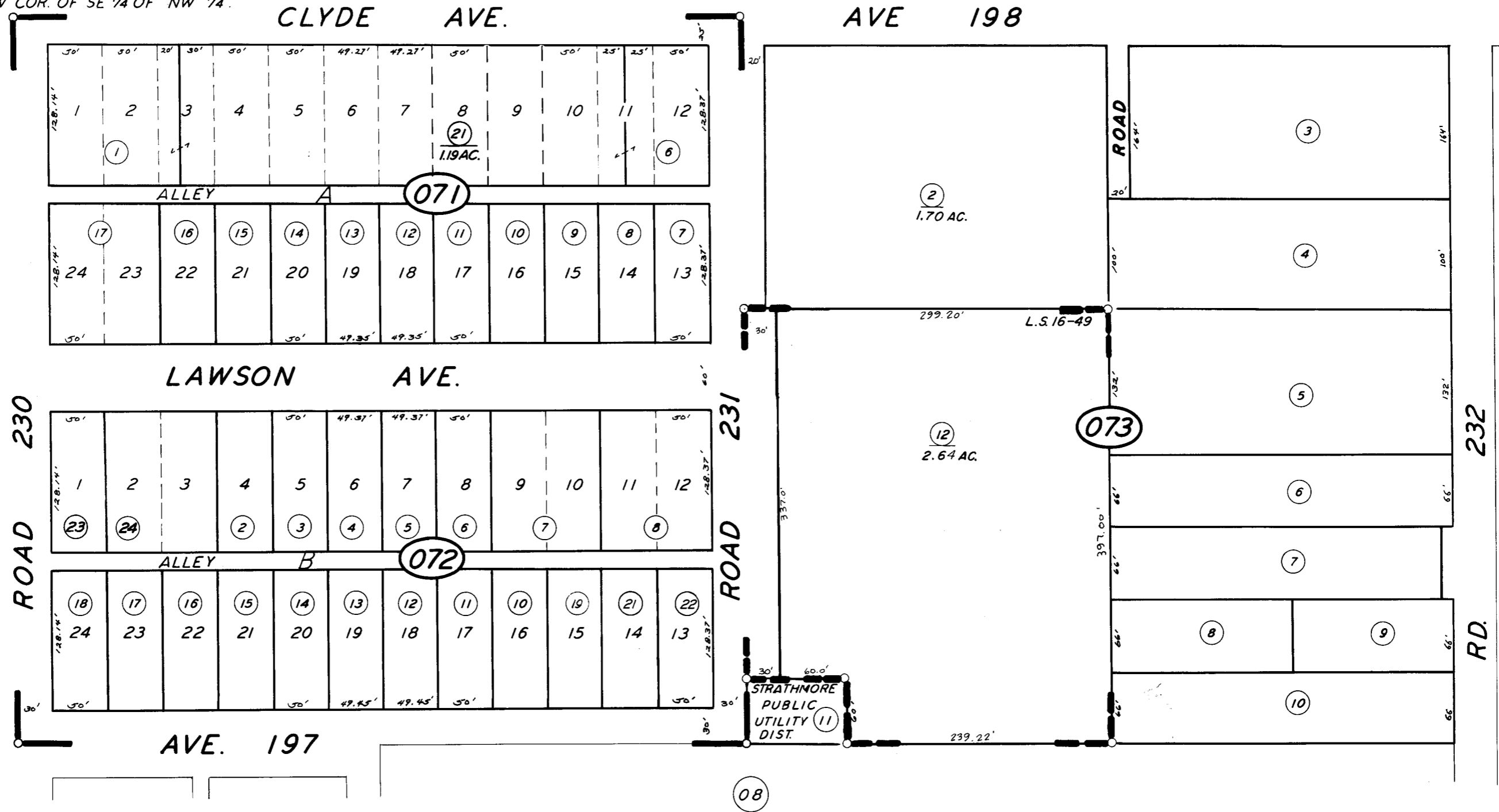


31

NW COR. OF SE 1/4 OF NW 1/4.



10

06

PARK ADD. TO STRATHMORE. R.M. 12-16.
RECORD OF SURVEY,
L.S. 16-49

ASSESSOR'S MAPS BK. 215, PG. 07.
COUNTY OF TULARE, CALIF.

NOTE - ASSESSOR'S BLOCK NUMBERS SHOWN IN ELLIPSES
ASSESSOR'S PARCEL NUMBERS SHOWN IN CIRCLES

