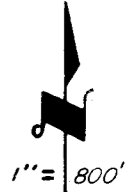
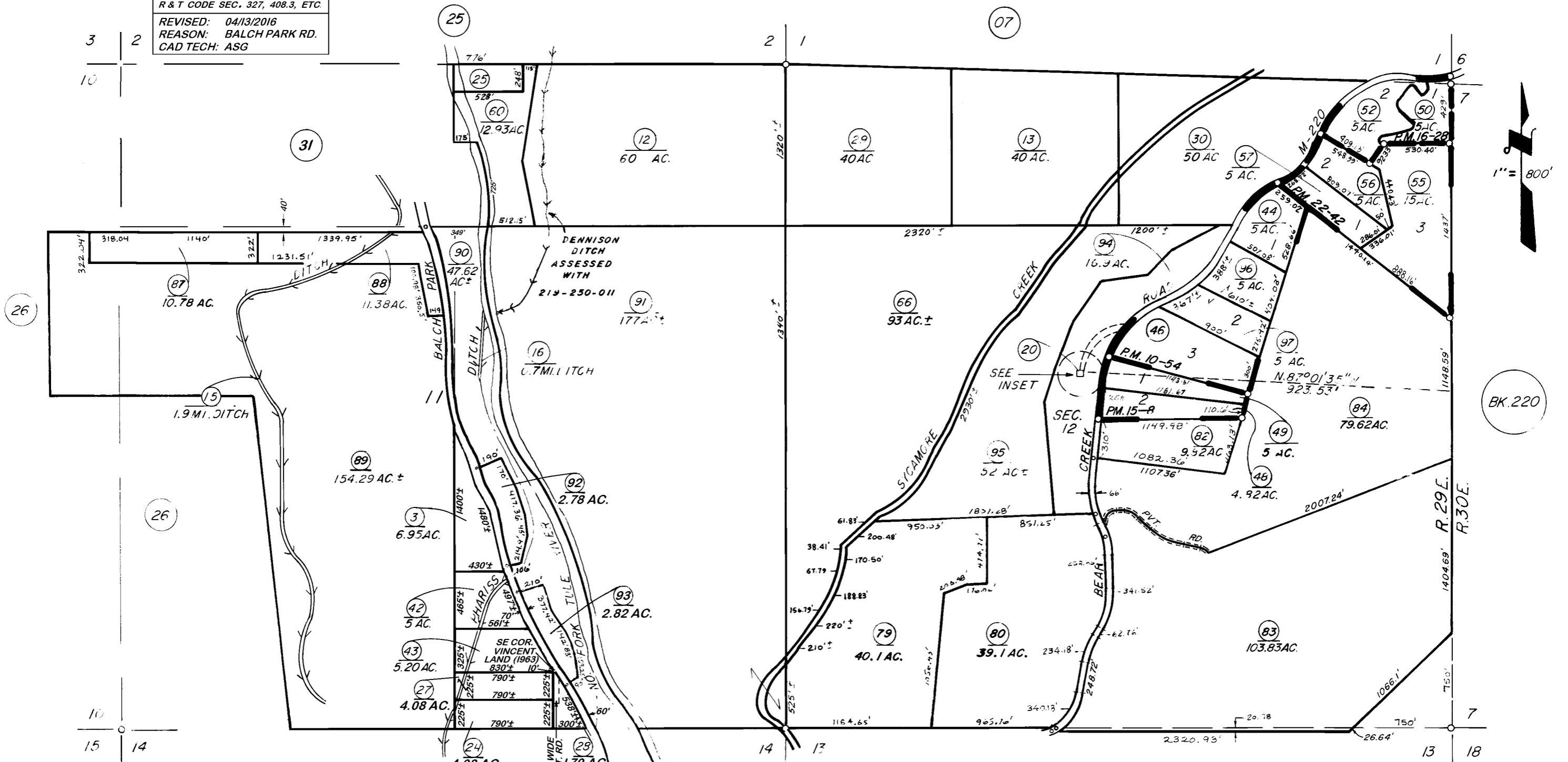


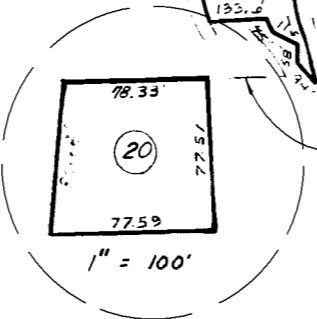
DISCLAIMER

THIS MAP WAS PREPARED FOR LOCAL PROPERTY ASSESSMENT PURPOSES ONLY. THE PARCELS SHOWN HEREON MAY NOT COMPLY WITH STATE AND LOCAL SUBDIVISION ORDINANCES. NO LIABILITY IS ASSUMED FOR THE USE OF THE INFORMATION HEREON. R & T CODE SEC. 327, 408.3, ETC.

REVISED: 04/13/2016
REASON: BALCH PARK RD.
CAD TECH: ASG



PARCEL MAP 953 P.M. 10-54
 PARCEL MAP 1407 P.M. 15-8
 PARCEL MAP 1527 P.M. 16-28
 PARCEL MAP 2141 P.M. 22-42



N 87°01'35" W OF E 1/4 NOTE—ASSESSOR'S BLOCK NUMBERS SHOWN IN ELLIPSES
 ASSESSOR'S PARCEL NUMBERS SHOWN IN CIRCLES