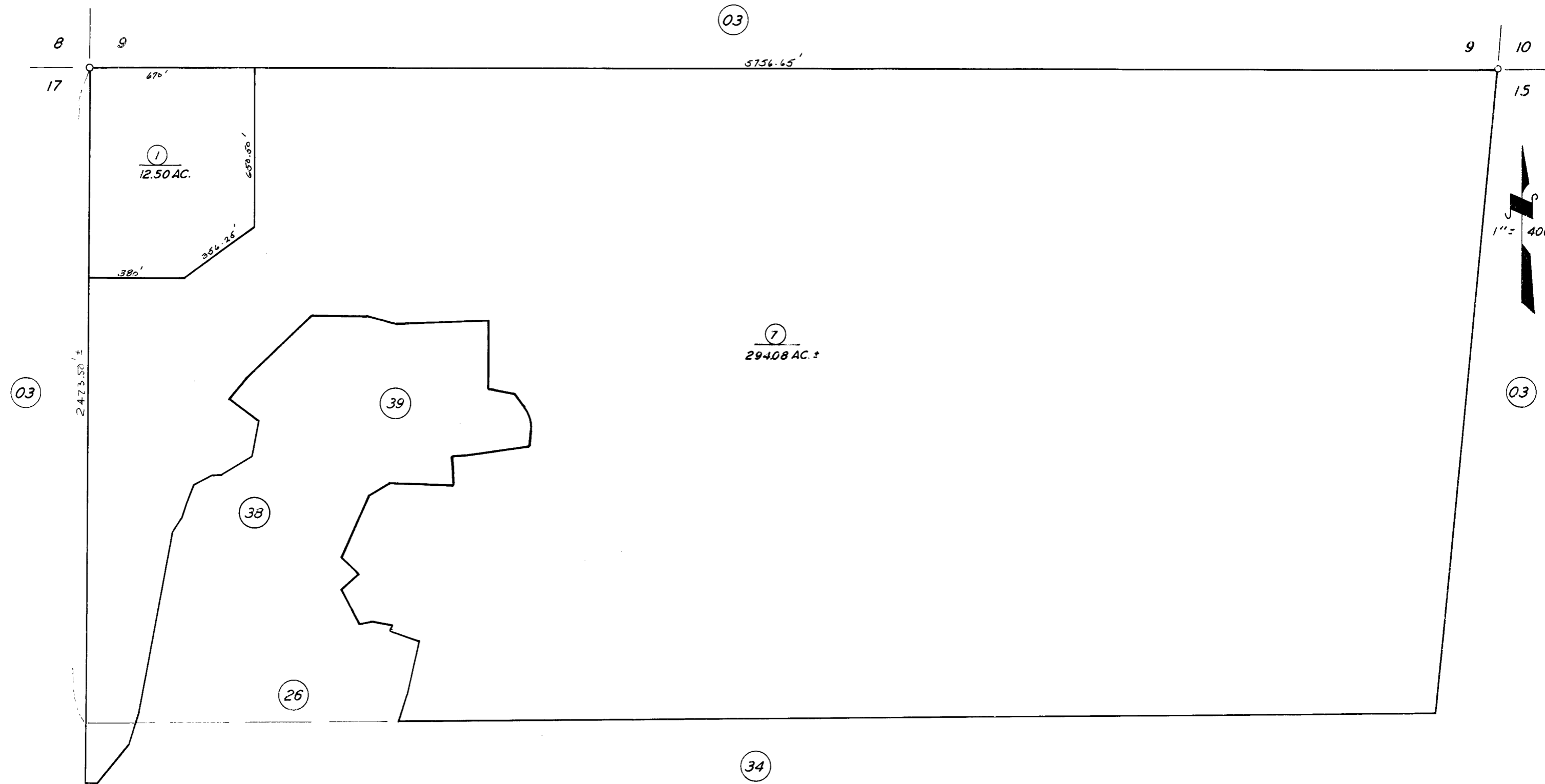


69
72

N'LY. POR. SEC. 16, T. 20S., R. 31E. M.D.B. & M.

TAX CODE AREA **220-33**
136-002



POR. RECORD OF SURVEY, L.S. 10-60 (ALL SEC. 16)

ASSESSOR'S MAPS BK. 220, PG. 33.
COUNTY OF TULARE, CALIF.

NOTE - ASSESSOR'S BLOCK NUMBERS SHOWN IN ELLIPSES
ASSESSOR'S PARCEL NUMBERS SHOWN IN CIRCLES