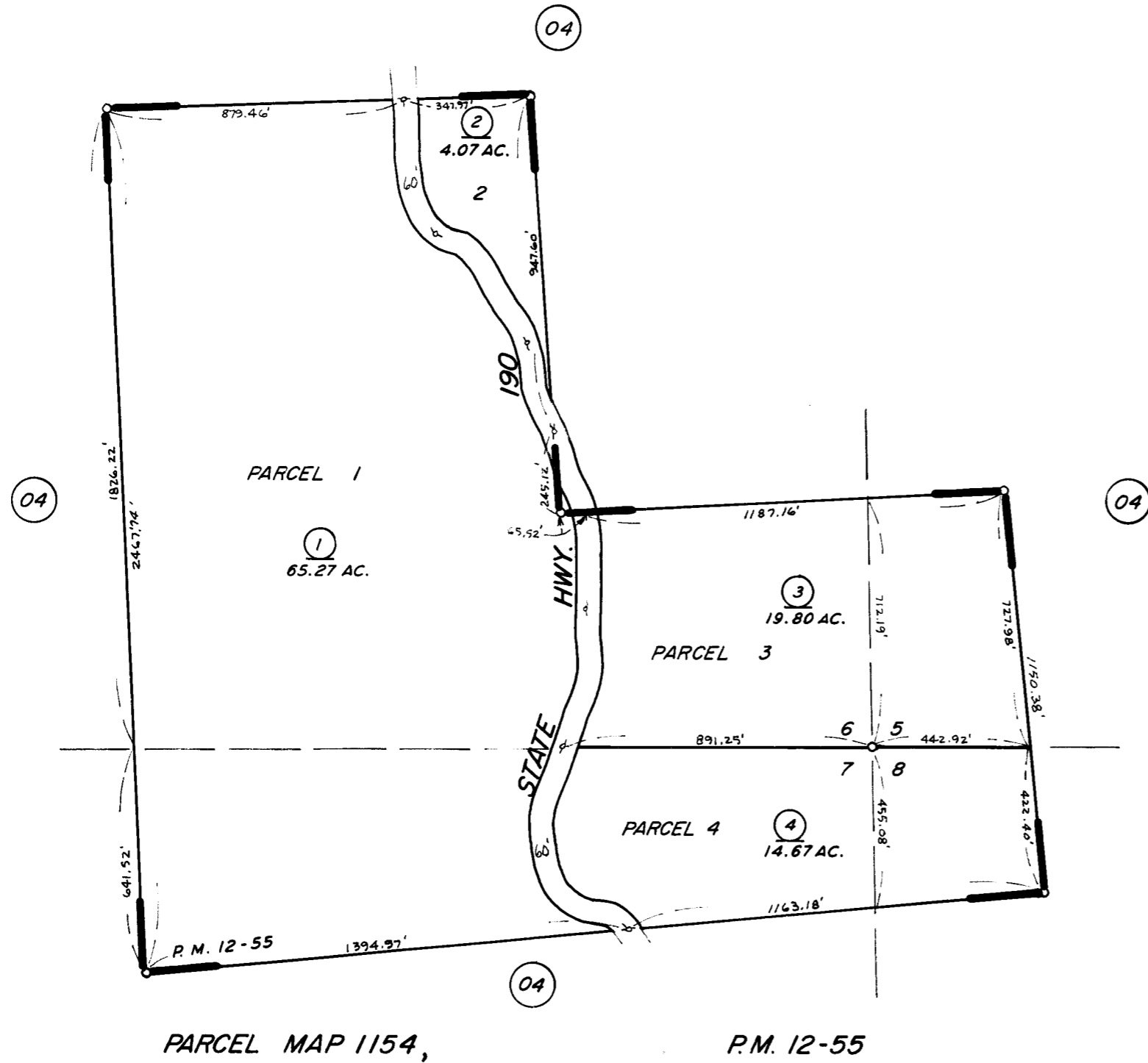


POR. SE 1/4 SEC. 6, POR. SW 1/4 SEC. 5, POR. NE 1/4 SEC. 7, POR. NW 1/4 SEC. 8
(GOV'T. TR. NO. 38) T. 21 S., R. 32 E., M. D. B. & M.

TAX CODE AREA 223-20
136-005



ASSESSOR'S MAPS BK. 223, PG. 04
COUNTY OF TULARE, CALIF.

NOTE - ASSESSOR'S BLOCK NUMBERS SHOWN IN ELLIPSES
ASSESSOR'S PARCEL NUMBERS SHOWN IN CIRCLES