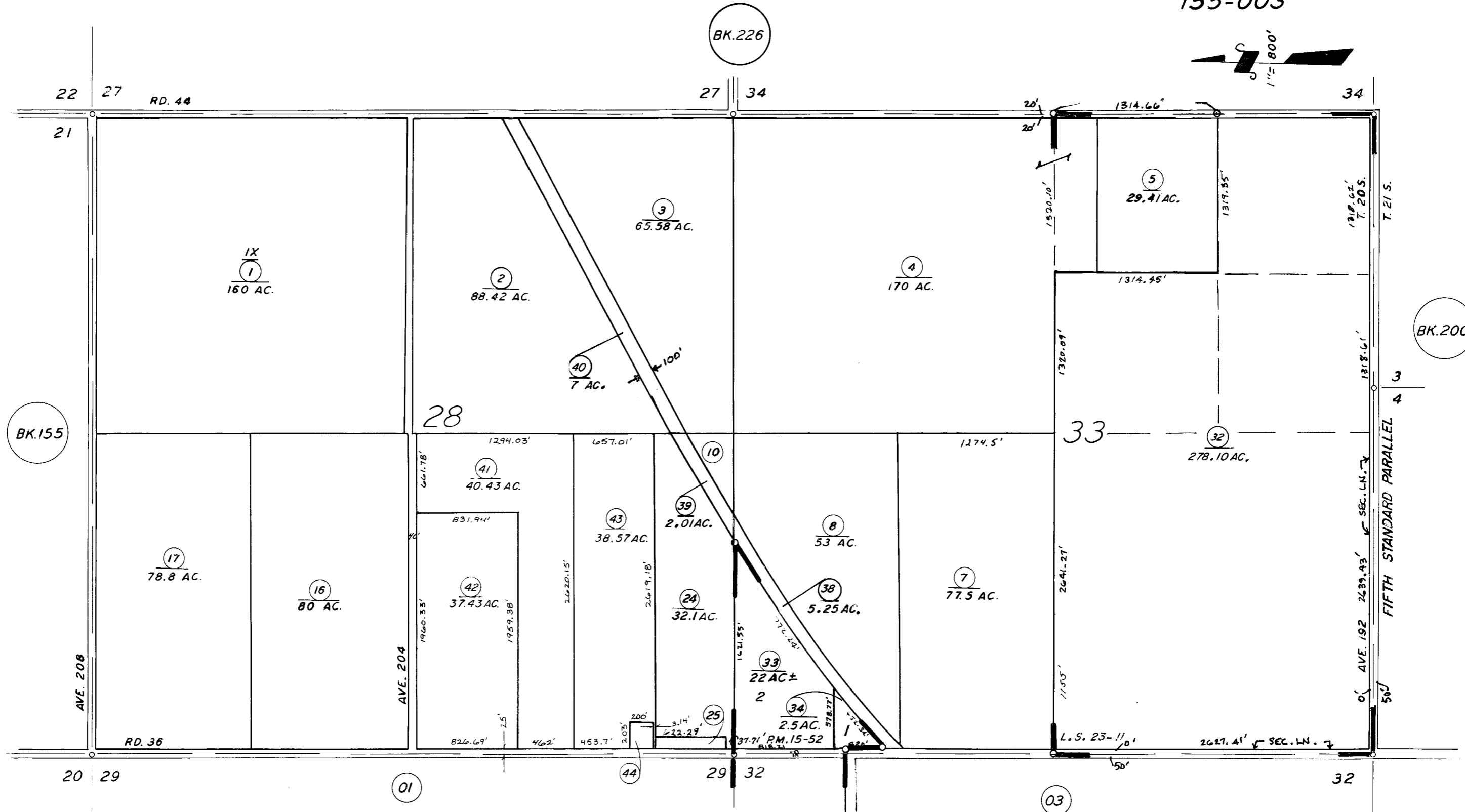


70
71
69

SEC. 28 & 33, T. 20 S., R. 23 E., M. D. B. & M.

TAX CODE AREA 225-02
155-003



POR. PARCEL MAP 1451, P.M. 15-52
POR. RECORD OF SURVEY, L.S. 9-63 (5th. STD. PRL) J
POR. RECORD OF SURVEY, L.S. 23-11

ASSESSOR'S MAPS BK. 225, PG. 02.
COUNTY OF TULARE, CALIF.

NOTE — ASSESSOR'S BLOCK NUMBERS SHOWN IN ELLIPSES
ASSESSOR'S PARCEL NUMBERS SHOWN IN CIRCLES