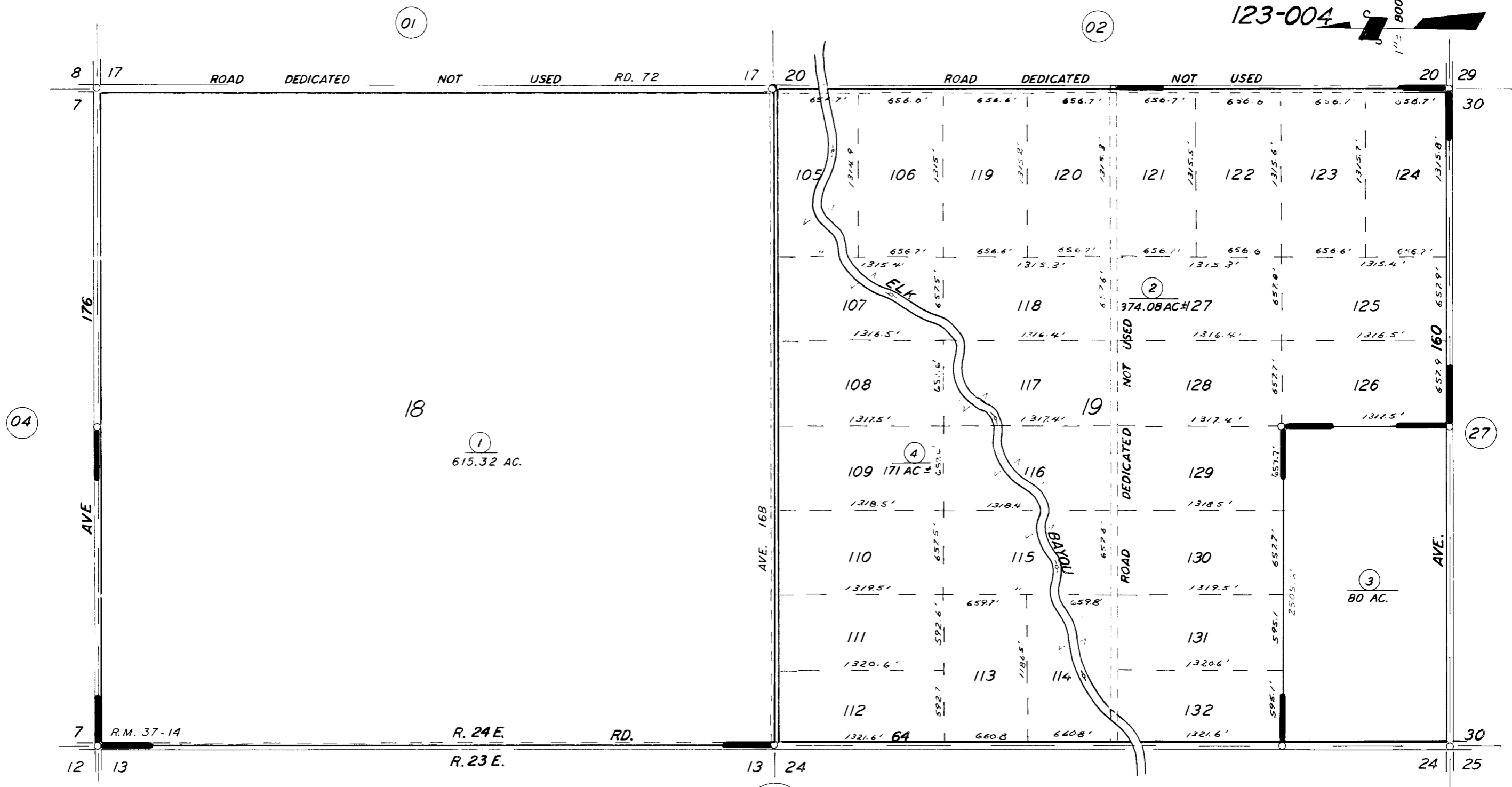


SEC'S. 18 & 19, T. 21 S., R. 24 E., M.D.B. & M.

TAX CODE AREA 228-03

123-006
123-001
123-004



POR. ELK BAYOU COL. R.M. 16-39
REVERSION TO ACREAGE R.M. 37-14 (LTS 73-104)

BK. 200

NOTE - ASSESSOR'S BLOCK NUMBERS SHOWN IN ELLIPSES
ASSESSOR'S PARCEL NUMBERS SHOWN IN CIRCLES

