

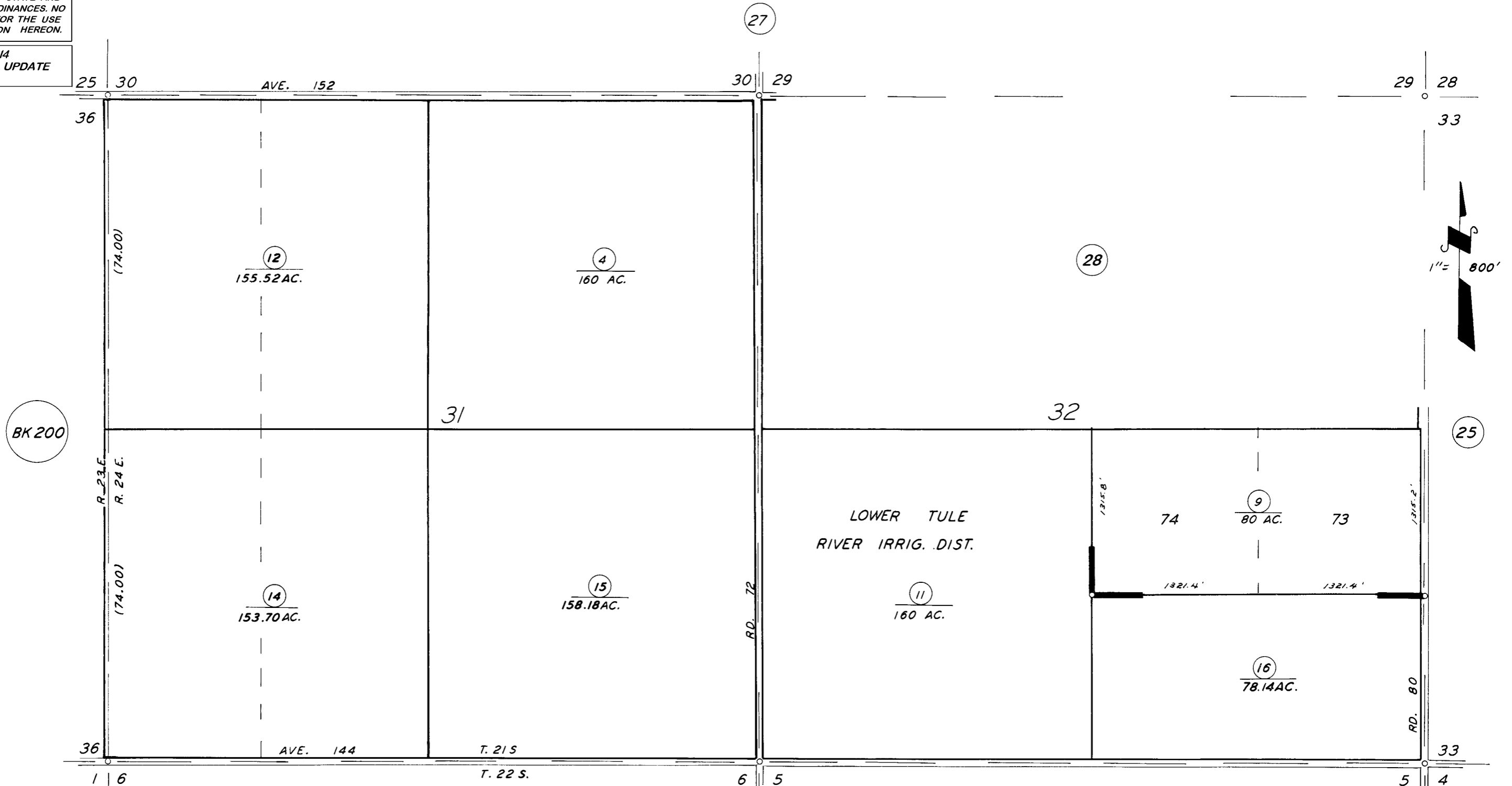
DISCLAIMER
 THIS MAP WAS PREPARED FOR LOCAL PROPERTY ASSESSMENT PURPOSES ONLY. THE PARCELS SHOWN HEREON MAY NOT COMPLY WITH STATE AND LOCAL SUBDIVISION ORDINANCES. NO LIABILITY IS ASSUMED FOR THE USE OF THE INFORMATION HEREON.

REVISED: 04/07/2014
 REASON: ADJ. PG. UPDATE
 CAD TECH: JRS

SEC'S. 31 & 32, T.21S., R.24E., M.D.B.&M.

TAX CODE AREA 228-26

123-006



POR. LOS POZOS TRACT R.M. 17-60
 RECORD OF SURVEY L.S. 18-79

VICINITY OF TIPTON
 ASSESSOR'S MAPS BK. 228, PG. 26
 COUNTY OF TULARE, CALIF.

NOTE -- ASSESSOR'S BLOCK NUMBERS SHOWN IN ELLIPSES
 ASSESSOR'S PARCEL NUMBERS SHOWN IN CIRCLES

