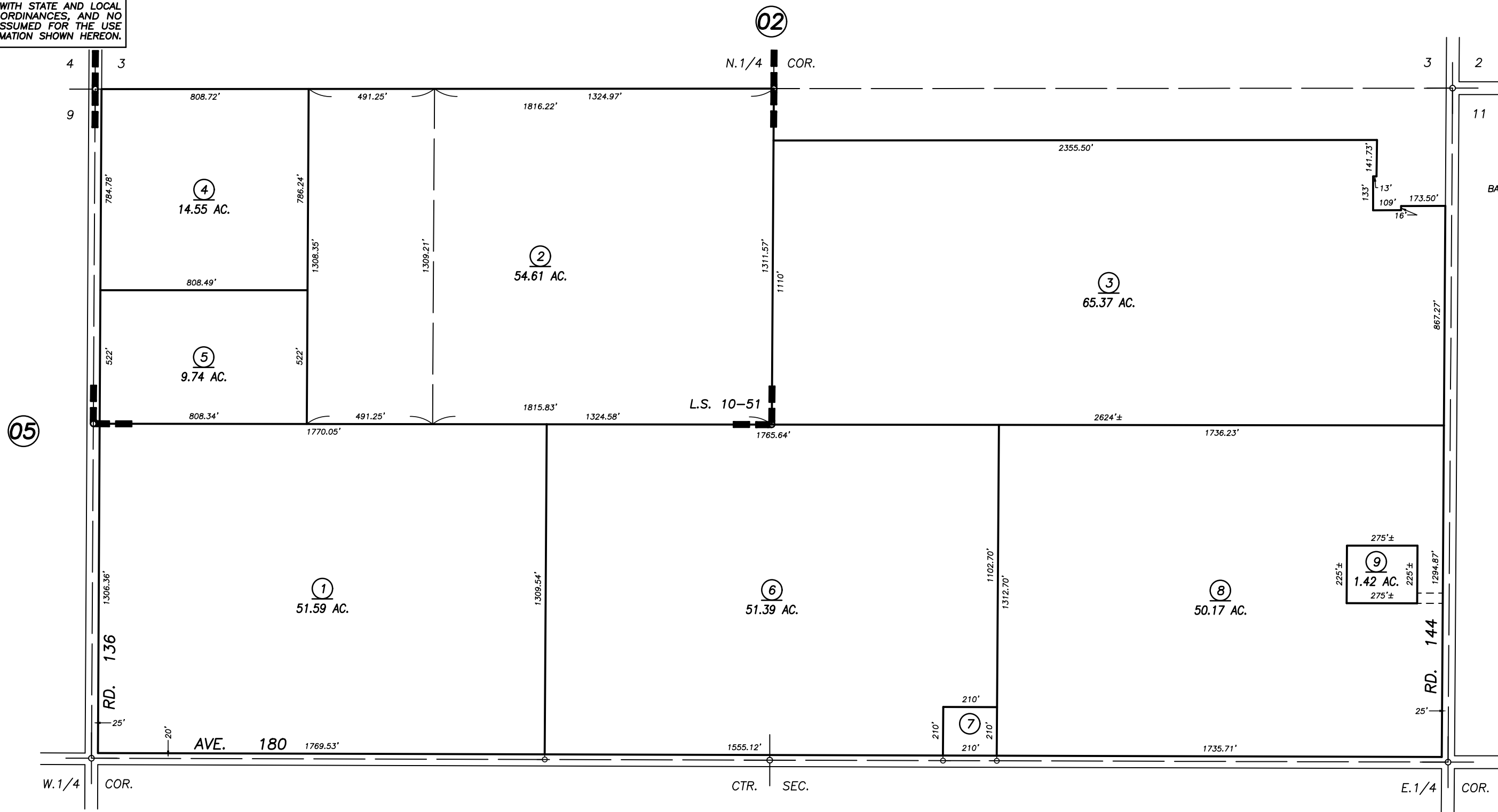
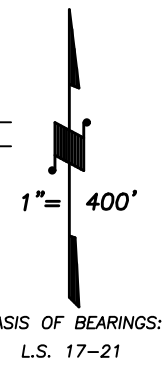
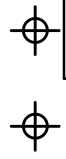


**DISCLAIMER**  
THIS MAP WAS PREPARED FOR LOCAL  
PROPERTY ASSESSMENT PURPOSES ONLY  
AND THE PARCELS SHOWN HEREON MAY  
NOT COMPLY WITH STATE AND LOCAL  
SUBDIVISION ORDINANCES, AND NO  
LIABILITY IS ASSUMED FOR THE USE  
OF THE INFORMATION SHOWN HEREON.



POR. RECORD OF SURVEY, L.S. 10-51

VICINITY OF TIPTON  
ASSESSOR'S MAPS BK. 232 , PG. 19  
COUNTY OF TULARE, CALIFORNIA, U.S.A.

NOTE: Assessor's Parcel Numbers Shown in Circles (1) (123)  
Assessor's Block Numbers Shown in Elipses (2) (3)

CAD CONVERSION	01/26/2005	PHN
REVISION	DATE	TECH