

**DISCLAIMER**

THIS MAP WAS PREPARED FOR LOCAL PROPERTY ASSESSMENT PURPOSES ONLY. THE PARCELS SHOWN HEREON MAY NOT COMPLY WITH STATE AND LOCAL SUBDIVISION ORDINANCES. NO LIABILITY IS ASSUMED FOR THE USE OF THE INFORMATION HEREON. R & T CODE SEC. 327, 408.3, ETC.

REVISED: 04/23/2019  
REASON: 2017-0049910  
CAD TECH: ASG

SEC. 26, T.21S., R.26E., M.D.B.&M.

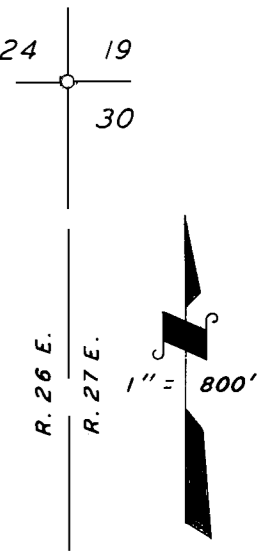
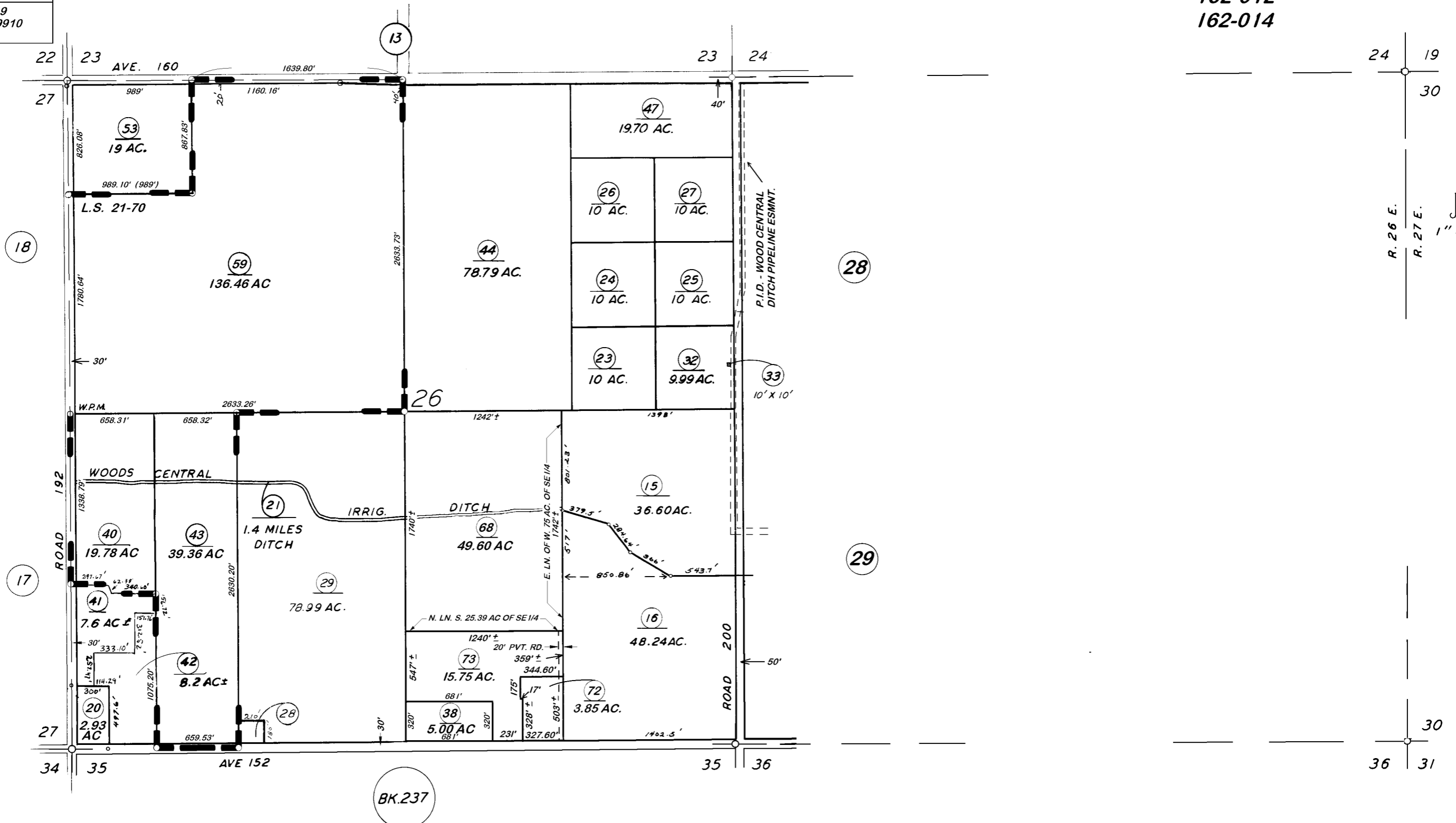
TAX CODE AREA **236-14**

132-002

162-006

162-012

162-014



POR. RECORD OF SURVEY, L.S. 21-70

VICINITY OF POPLAR  
ASSESSOR'S MAPS BK. 236, PG. 14.  
COUNTY OF TULARE, CALIF.

NOTE -- ASSESSOR'S BLOCK NUMBERS SHOWN IN ELLIPSES  
ASSESSOR'S PARCEL NUMBERS SHOWN IN CIRCLES

