

DISCLAIMER

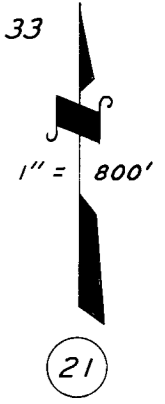
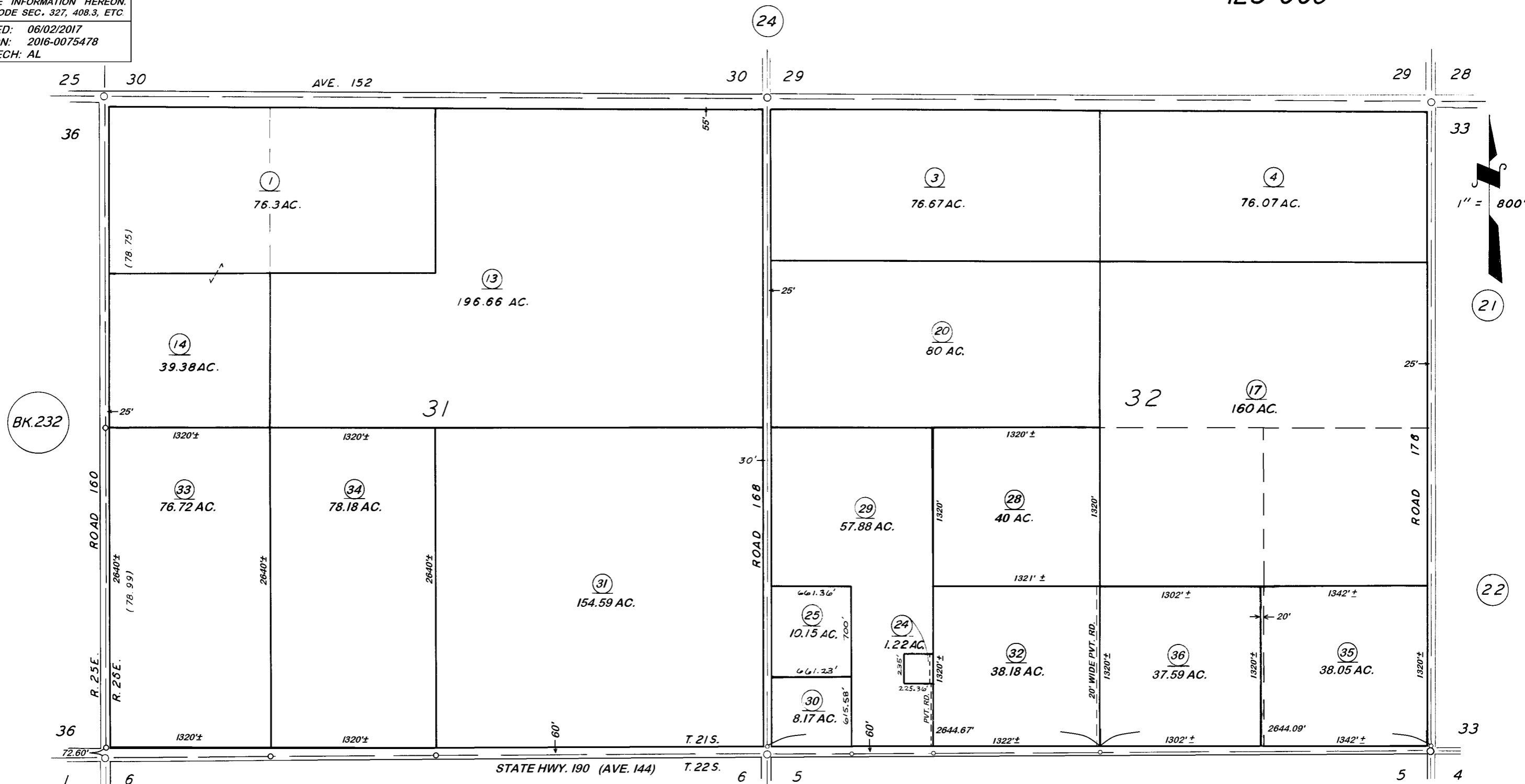
THIS MAP WAS PREPARED FOR LOCAL PROPERTY ASSESSMENT PURPOSES ONLY. THE PARCELS SHOWN HEREON MAY NOT COMPLY WITH STATE AND LOCAL SUBDIVISION ORDINANCES. NO LIABILITY IS ASSUMED FOR THE USE OF THE INFORMATION HEREON. R & T CODE SEC. 327, 408.3, ETC.

REVISED: 06/02/2017
REASON: 2016-0075478
CAD TECH: AL

SEC'S. 31 & 32, T.21S., R.26E., M.D.B.&M.

TAX CODE AREA 236-23

125-000



BK.232

BK.300

VICINITY OF POPLAR
ASSESSOR'S MAPS BK. 236, PG. 23.
COUNTY OF TULARE, CALIF.

NOTE — ASSESSOR'S BLOCK NUMBERS SHOWN IN ELLIPSES
ASSESSOR'S PARCEL NUMBERS SHOWN IN CIRCLES