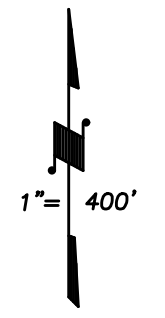


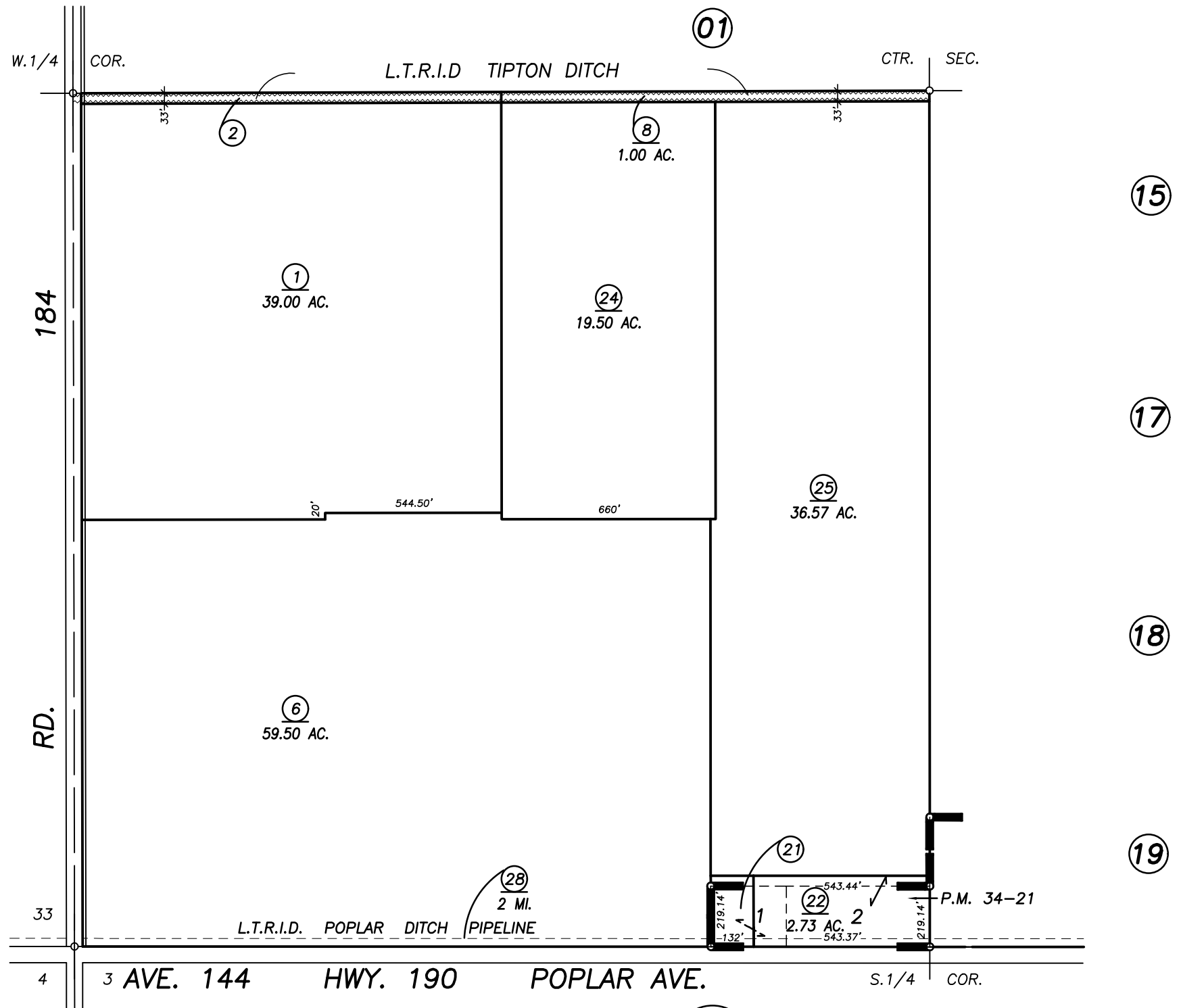
DISCLAIMER
 THIS MAP WAS PREPARED FOR LOCAL PROPERTY ASSESSMENT PURPOSES ONLY AND THE PARCELS SHOWN HEREON MAY NOT COMPLY WITH STATE AND LOCAL SUBDIVISION ORDINANCES, AND NO LIABILITY IS ASSUMED FOR THE USE OF THE INFORMATION SHOWN HEREON.

POR. S 1/2 SECTION 34, T.21S., R.26E., M.D.B.&M.

Tax Area Code **237-14**
 125-000
 125-006



Bk. 236



Bk. 300

POR. PARCEL MAP 3319, P.M. 34-21

VICINITY OF POPLAR
 ASSESSOR'S MAPS BK. 237 , PG. 14
 COUNTY OF TULARE, CALIFORNIA, U.S.A.

NOTE: Assessor's Parcel Numbers Shown in Circles ① ② ③
 Assessor's Block Numbers Shown in Ellipses ① ② ③

ADD DITCH APN	4/29/2010	JLC
REVISION	DATE	TECH