

DISCLAIMER

THIS MAP WAS PREPARED FOR LOCAL PROPERTY ASSESSMENT PURPOSES ONLY AND THE PARCELS SHOWN HEREON MAY NOT COMPLY WITH STATE AND LOCAL SUBDIVISION ORDINANCES, AND NO LIABILITY IS ASSUMED FOR THE USE OF THE INFORMATION SHOWN HEREON.

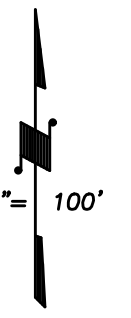
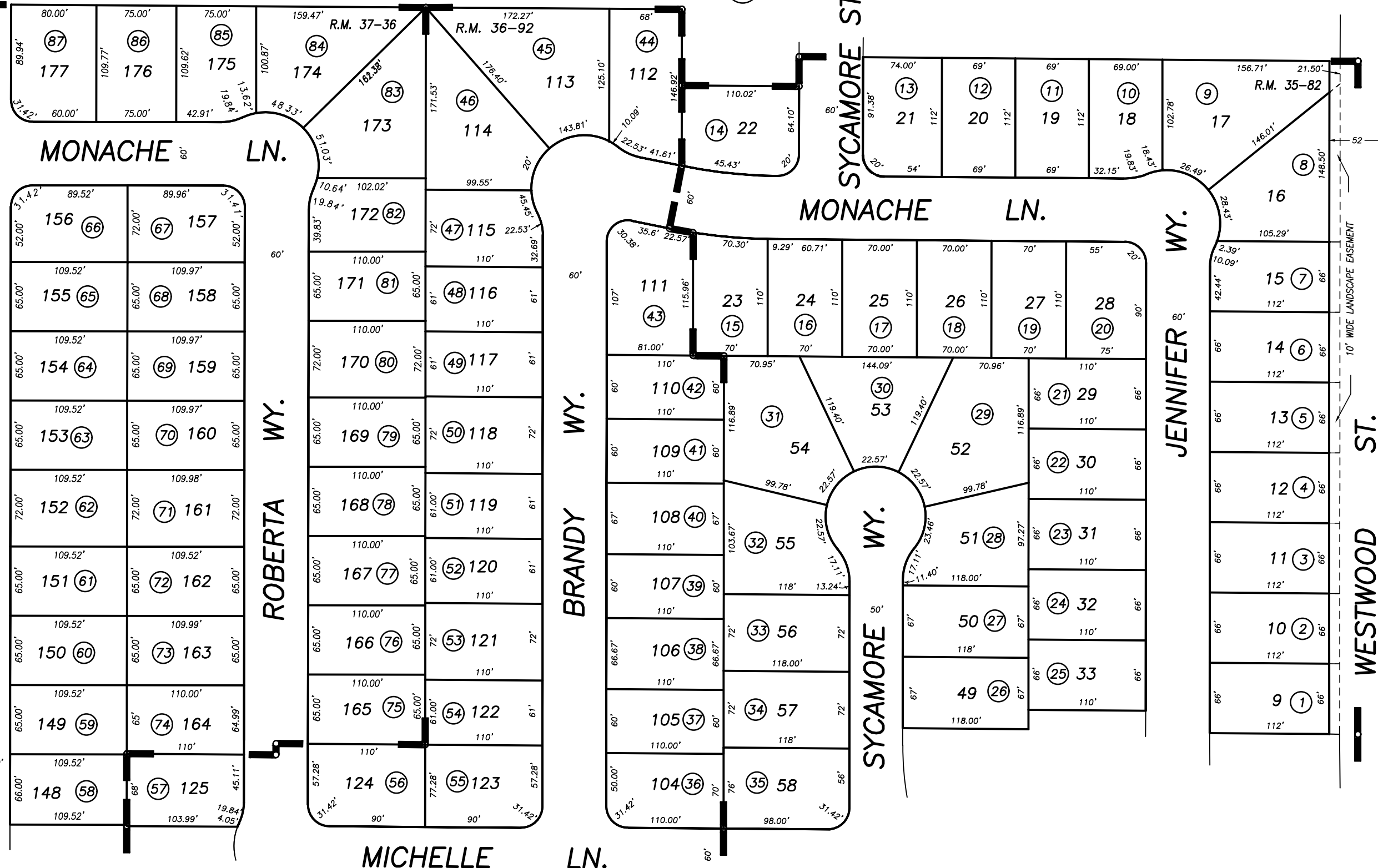
POR. E 1/2 OF SE 1/4 SEC. 20, T.21 S., R.27 E., M.D.B.& M.

Tax Area Code 240-23  
004-121

PORTER SLOUGH DITCH PIPELINE  
ASSESSED W/245-070-04

05

ELDERWOOD ST.



Bk. 245

POR. PORTER CREEK PHASE ONE, R.M. 35-82  
POR. PORTER CREEK PHASE THREE, R.M. 36-92  
POR. PORTER CREEK PHASE FOUR, R.M. 37-36

24

CITY OF PORTERVILLE  
ASSESSOR'S MAPS BK. 240 , PG. 23  
COUNTY OF TULARE, CALIFORNIA, U.S.A.

NOTE: Assessor's Parcel Numbers Shown in Circles  
Assessor's Block Numbers Shown in Ellipses

STREET UPDATE	11/14/2008	ASG
REVISION	DATE	TECH