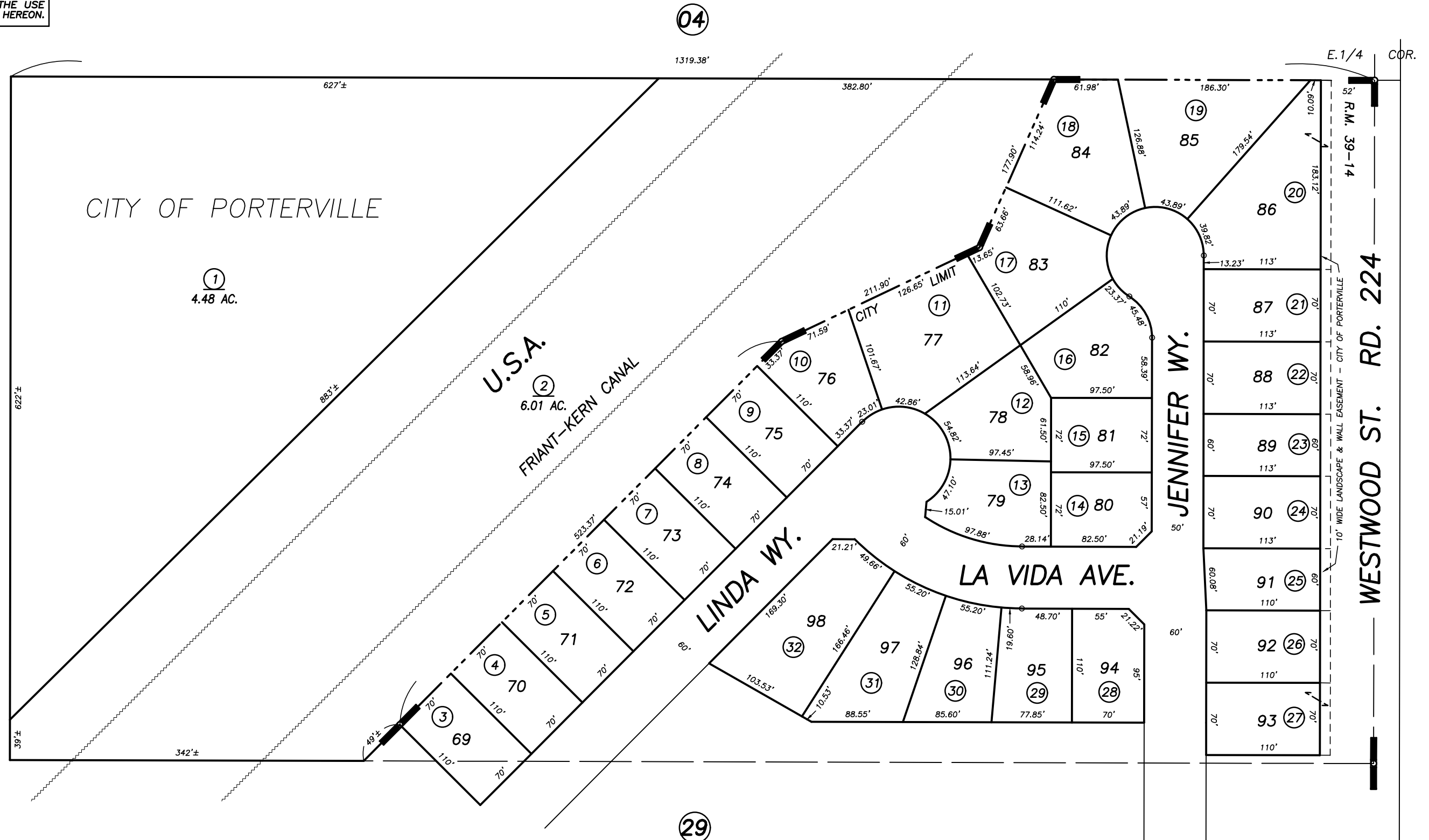


**DISCLAIMER**  
 THIS MAP WAS PREPARED FOR LOCAL PROPERTY ASSESSMENT PURPOSES ONLY AND THE PARCELS SHOWN HEREON MAY NOT COMPLY WITH STATE AND LOCAL SUBDIVISION ORDINANCES, AND NO LIABILITY IS ASSUMED FOR THE USE OF THE INFORMATION SHOWN HEREON.

N 1/2 OF SE 1/4 OF NE 1/4 SEC. 20, T.21 S., R.27 E., M.D.M.& M. Tax Area Code 240-31

004-136  
 061-000



POR. NORTH CREEK PHASE TWO, R.M. 39-14

CITY OF PORTERVILLE  
 ASSESSOR'S MAPS BK. 240 , PG. 31  
 COUNTY OF TULARE, CALIFORNIA, U.S.A.

NOTE: Assessor's Parcel Numbers Shown in Circles (1) (123)  
 Assessor's Block Numbers Shown in Ellipses

2018-0018857	12/20/2018	WAC
REVISION	DATE	TECH