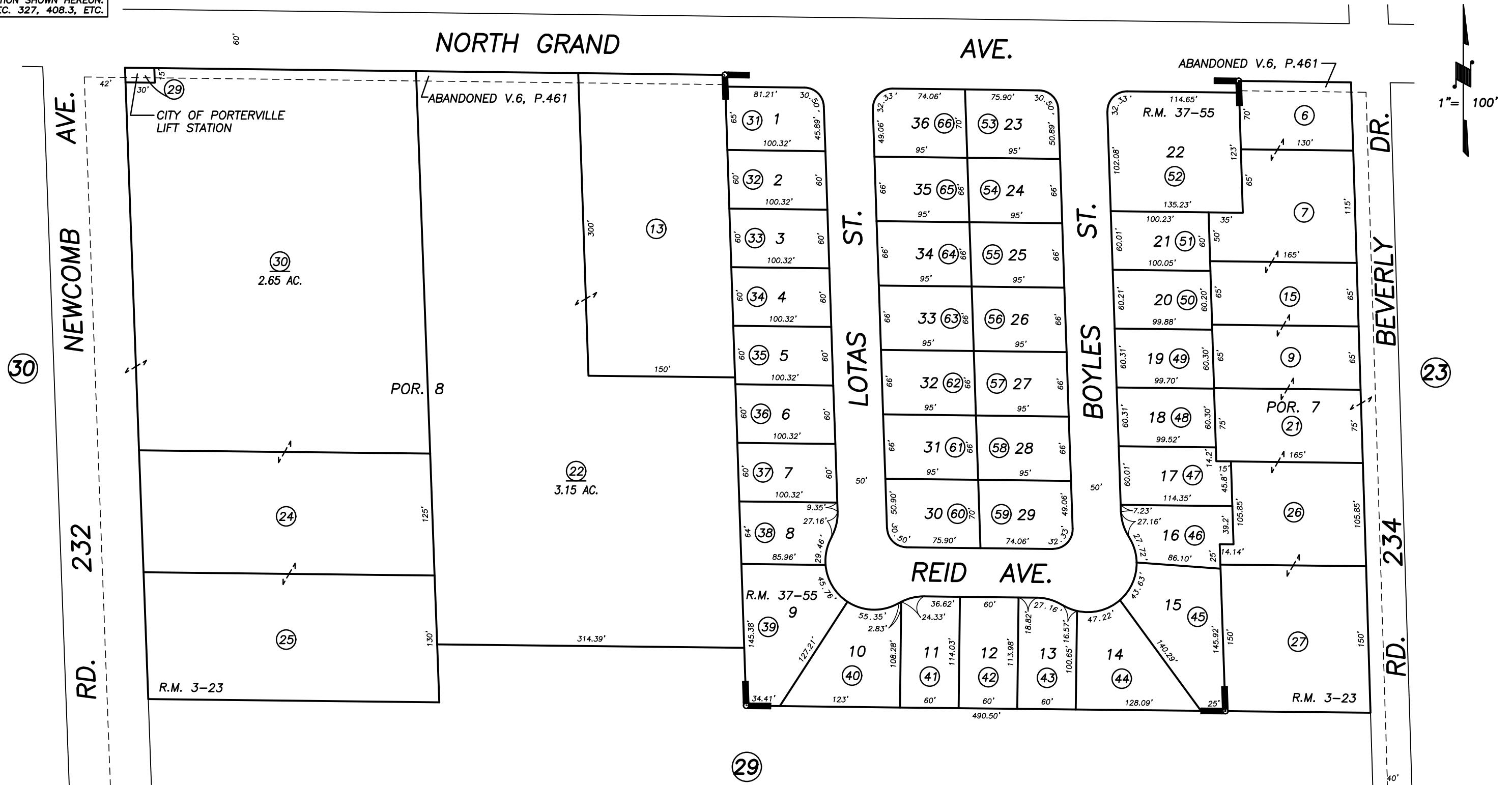


DISCLAIMER
 THIS MAP WAS PREPARED FOR LOCAL PROPERTY ASSESSMENT PURPOSES ONLY AND THE PARCELS SHOWN HEREON MAY NOT COMPLY WITH STATE AND LOCAL SUBDIVISION ORDINANCES, AND NO LIABILITY IS ASSUMED FOR THE USE OF THE INFORMATION SHOWN HEREON. R & T CODE SEC. 327, 408.3, ETC.

N1/2 OF SW1/4 OF SW1/4 SEC.15, T.21S., R.27E., M.D.B.&M.

Tax Area Code **243-28**
 004-124 004-125
 004-130 004-149

(27)



POR. PIONEER LAND COMPANY'S 2ND SUB., R.M. 3-23
 NORTH GRAND ESTATES, R.M. 37-55

CITY OF PORTERVILLE
 ASSESSOR'S MAPS BK. 243 , PG. 28
 COUNTY OF TULARE, CALIFORNIA, U.S.A.

NOTE: Assessor's Parcel Numbers Shown in Circles (1) (123)
 Assessor's Block Numbers Shown in Ellipses

TRAC CHANGES ONLY	06/29/2016	LLB
REVISION	DATE	TECH