

DISCLAIMER

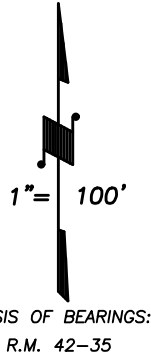
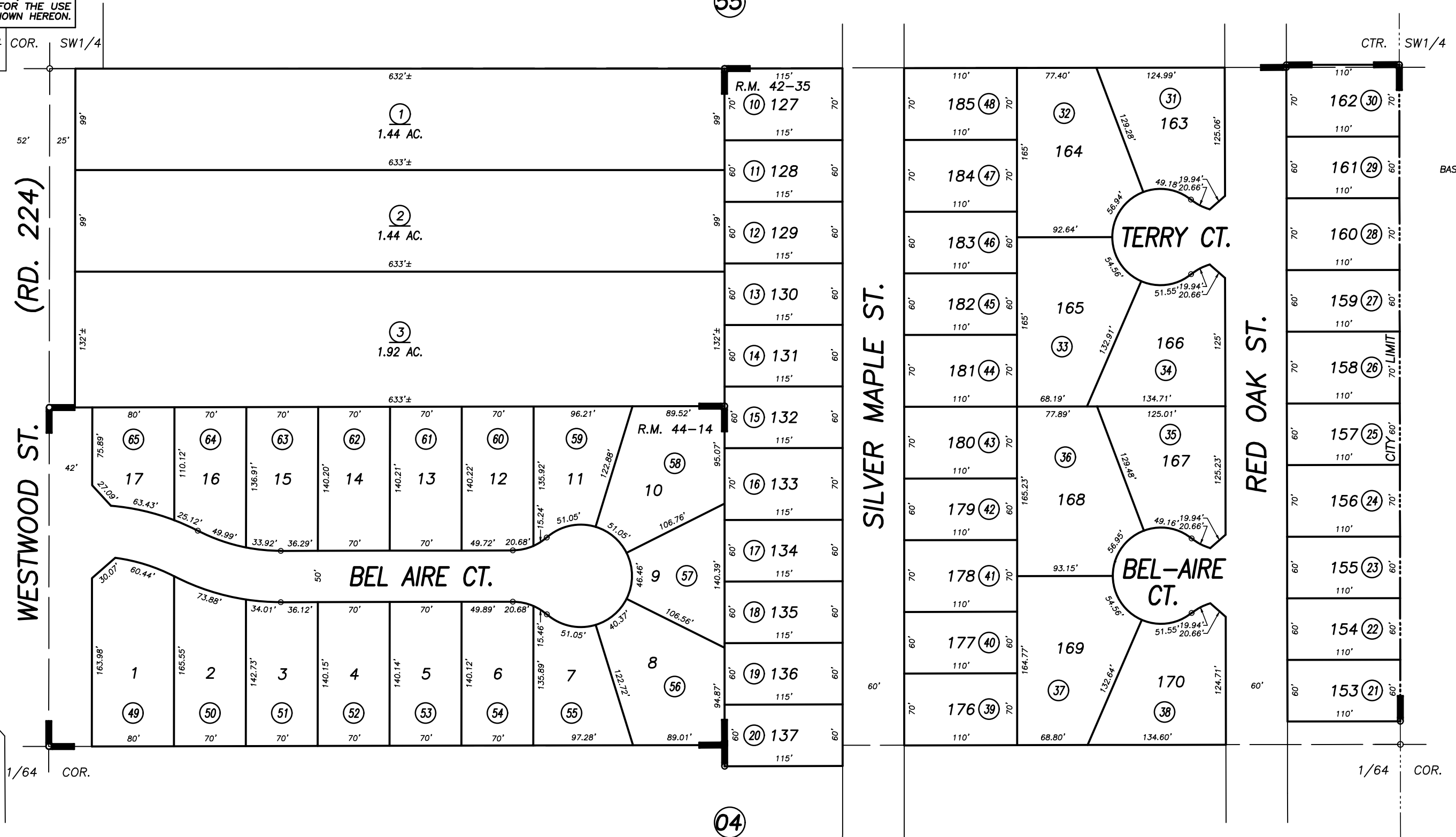
THIS MAP WAS PREPARED FOR LOCAL PROPERTY ASSESSMENT PURPOSES ONLY AND THE PARCELS SHOWN HEREON MAY NOT COMPLY WITH STATE AND LOCAL SUBDIVISION ORDINANCES, AND NO LIABILITY IS ASSUMED FOR THE USE OF THE INFORMATION SHOWN HEREON.

Bk. 240

WESTWOOD ST. (RD. 224)

SILVER MAPLE ST.

RED OAK ST.



POR. WILLIAMS RANCH, PHASE 4, R.M. 42-35  
TROOPER TERRACE, R.M. 44-14

CITY OF PORTERVILLE  
ASSESSOR'S MAPS BK. 245 , PG. 03  
COUNTY OF TULARE, CALIFORNIA, U.S.A.

|              |            |      |
|--------------|------------|------|
| 2018-0067378 | 12/20/2018 | WAC  |
| REVISION     | DATE       | TECH |