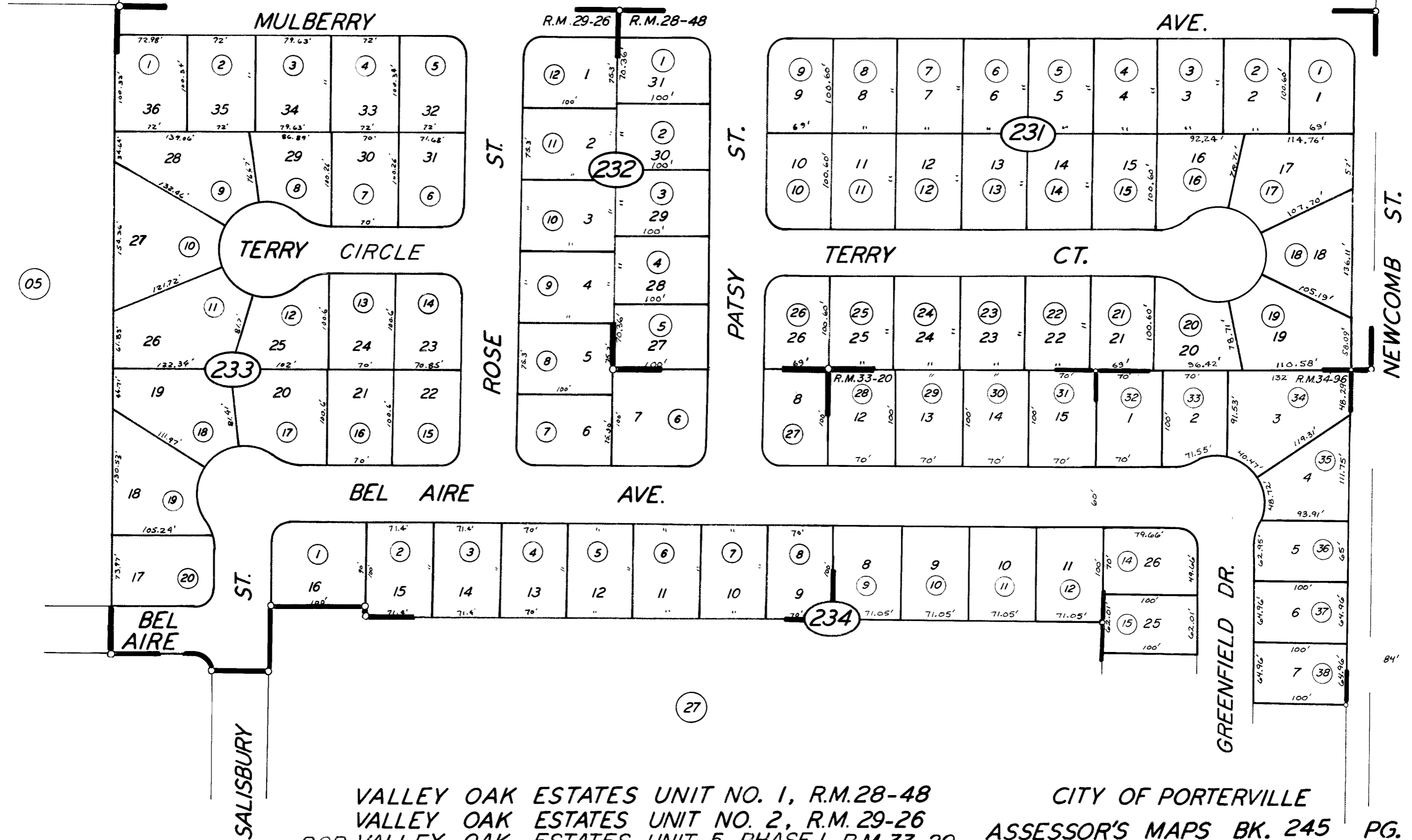


30



BK. 246

VALLEY OAK ESTATES UNIT NO. 1, R.M. 28-48
 VALLEY OAK ESTATES UNIT NO. 2, R.M. 29-26
 POR. VALLEY OAK ESTATES UNIT 5 - PHASE 1 R.M. 33-20
 POR. VALLEY OAK ESTATES UNIT 5 - PHASE 2 R.M. 34-96

CITY OF PORTERVILLE
 ASSESSOR'S MAPS BK. 245 PG. 23
 COUNTY OF TULARE, CALIF.

NOTE - ASSESSOR'S BLOCK NUMBERS SHOWN IN ELLIPSES
 ASSESSOR'S PARCEL NUMBERS SHOWN IN CIRCLES