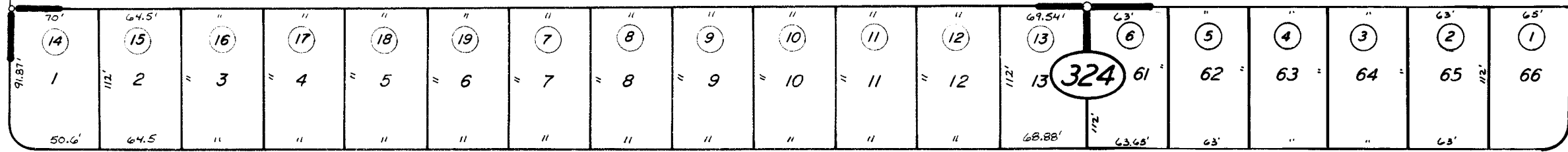
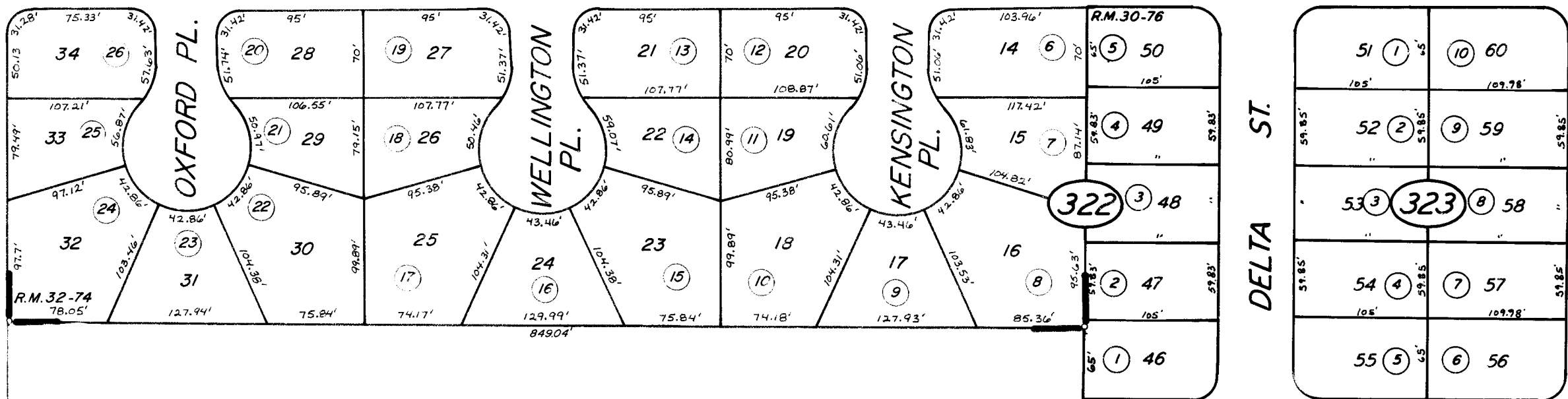


07



KANAI AVE.

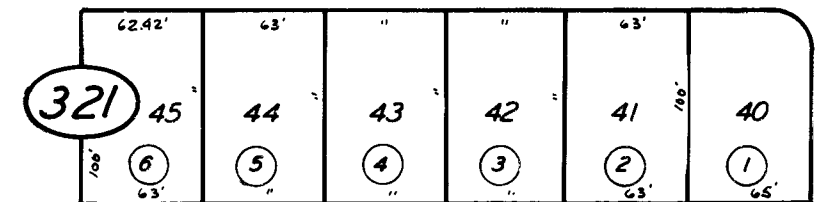


BK. 240

WESTWOOD ST.

LOMBARDI ST.

BELLEVIEW



31

W/4 COR.  
SEC. 28-21-27

SHERWOOD PARK WEST UNIT 3 R.M. 32-74  
POR. WESTERN SKIES UNIT NO. 1 R.M. 30-76

CITY OF PORTERVILLE  
ASSESSOR'S MAPS BK. 245, PG. 32  
COUNTY OF TULARE, CALIF.

NOTE - ASSESSOR'S BLOCK NUMBERS SHOWN IN ELLIPSES  
ASSESSOR'S PARCEL NUMBERS SHOWN IN CIRCLES



33