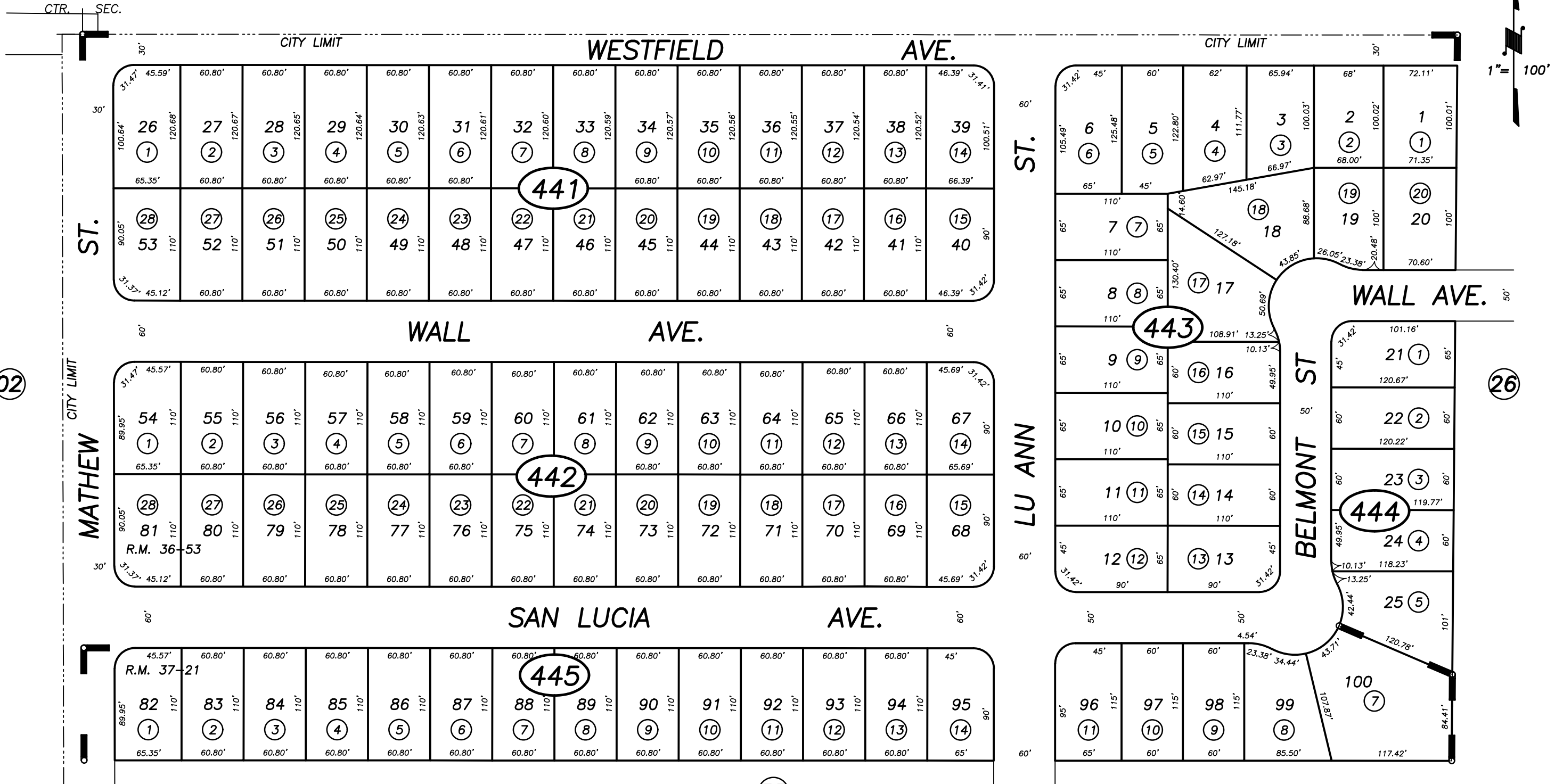


**DISCLAIMER**  
 THIS MAP WAS PREPARED FOR LOCAL PROPERTY ASSESSMENT PURPOSES ONLY AND THE PARCELS SHOWN HEREON MAY NOT COMPLY WITH STATE AND LOCAL SUBDIVISION ORDINANCES, AND NO LIABILITY IS ASSUMED FOR THE USE OF THE INFORMATION SHOWN HEREON.

01



NORTHPOINTE PHASE 1, R.M. 36-53  
 POR. NORTHPOINTE PHASE 2, R.M. 37-21

CITY OF PORTERVILLE  
 ASSESSOR'S MAPS BK. 245, PG. 44.  
 COUNTY OF TULARE, CALIF.

R.M. 37-21	REVISION	DATE	BY
3/7/96	KPT		

35

NOTE: Assessor's Block Numbers Shown in Ellipses  
 Assessor's Parcel Numbers Shown in Circles