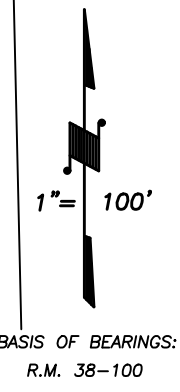
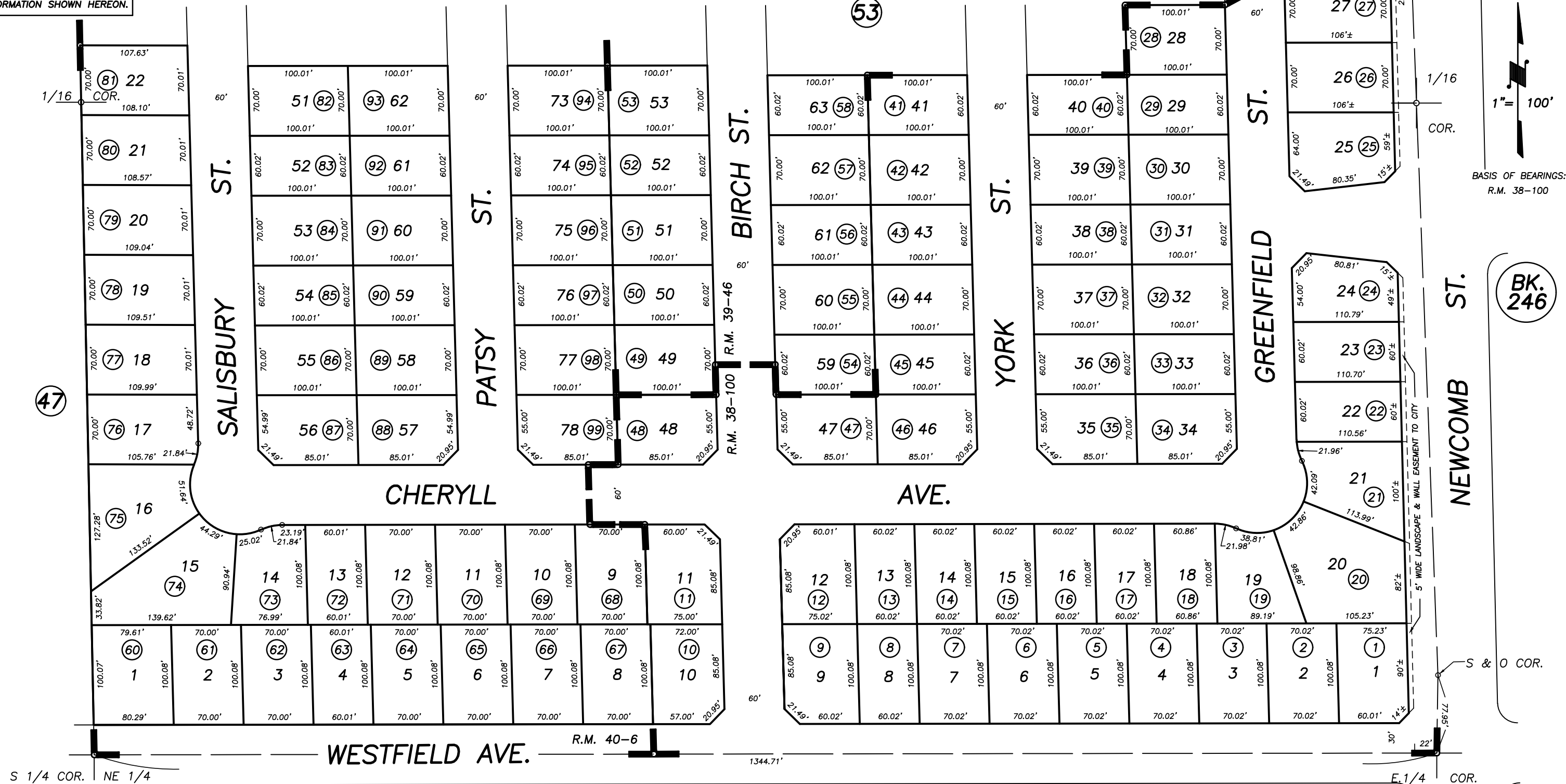


**DISCLAIMER**  
 THIS MAP WAS PREPARED FOR LOCAL PROPERTY ASSESSMENT PURPOSES ONLY AND THE PARCELS SHOWN HEREON MAY NOT COMPLY WITH STATE AND LOCAL SUBDIVISION ORDINANCES, AND NO LIABILITY IS ASSUMED FOR THE USE OF THE INFORMATION SHOWN HEREON.

S1/2 OF SE1/4 OF NE 1/4 SEC.21, T.21 S., R.27 E., M.D.B.&M.

Tax Area Code 245-50  
 004-124



MEADOWOOD PHASE ONE, R.M. 38-100  
 POR. MEADOWOOD PHASE TWO, R.M. 39-46  
 POR. MEADOWOOD PHASE THREE, R.M. 40-6

26

CITY OF PORTERVILLE  
 ASSESSOR'S MAPS BK. 245 , PG. 50  
 COUNTY OF TULARE, CALIFORNIA, U.S.A.

NOTE: Assessor's Parcel Numbers Shown in Circles  
 Assessor's Block Numbers Shown in Ellipses

2003-0059869	11/20/2003	PHN
REVISION	DATE	TECH