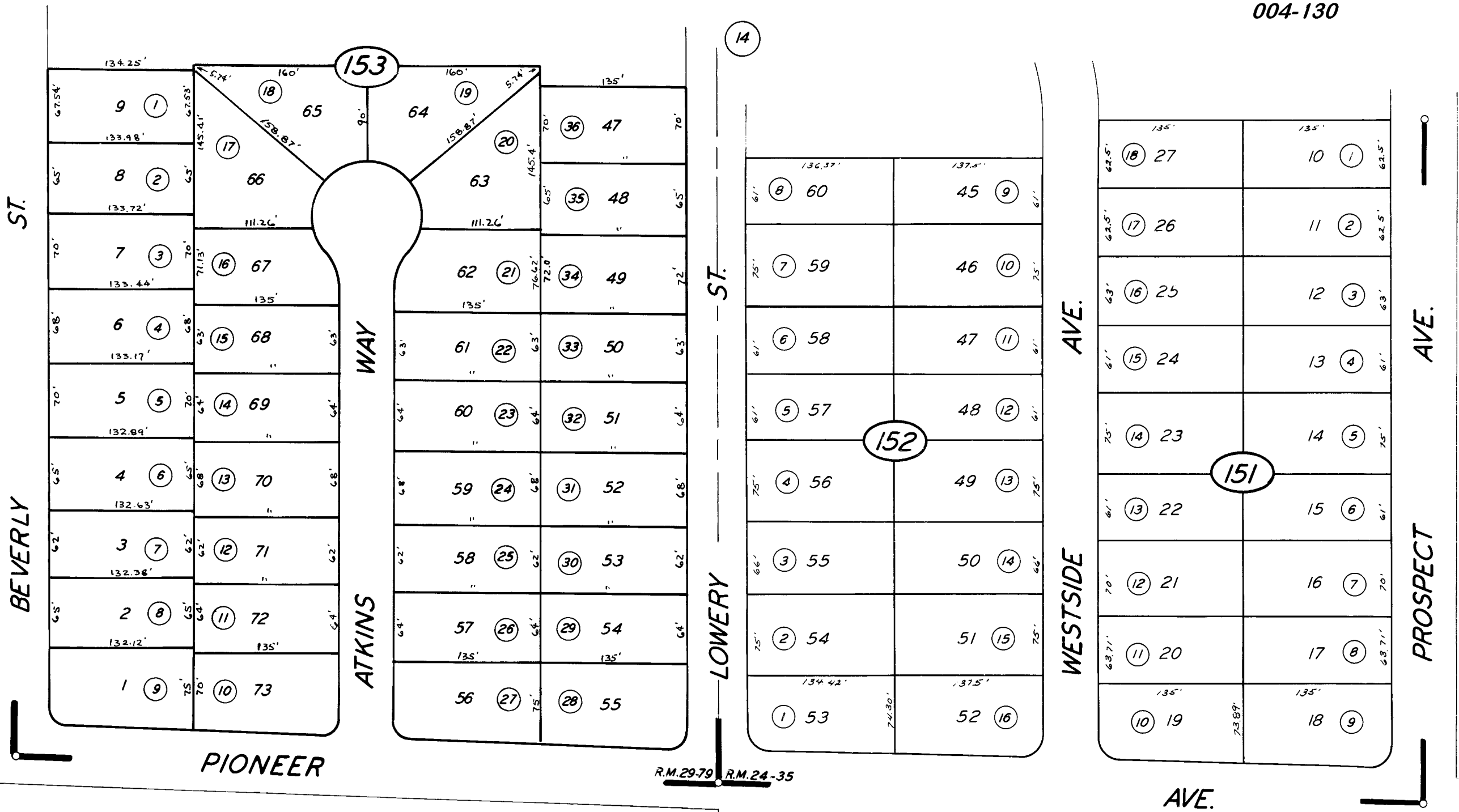


**DISCLAIMER**  
 THIS MAP WAS PREPARED FOR LOCAL PROPERTY ASSESSMENT PURPOSES ONLY. THE PARCELS SHOWN HEREON MAY NOT COMPLY WITH STATE AND LOCAL SUBDIVISION ORDINANCES. NO LIABILITY IS ASSUMED FOR THE USE OF THE INFORMATION HEREON.

REVISED: 08/09/2007  
 REASON: TRAC CHANGE  
 CAD TECH: JRS

SLY POR OF NE 1/4 OF NW 1/4 SEC. 22, T. 21 S., R. 27 E., M. D. B. & M.

TAX CODE AREA **246-15**  
 004-004  
 004-130



POR. MONACHE ESTATES NO. 5 . . . R.M. 29-79  
 POR. TRACT NO. 400 . . . R.M. 24-35

CITY OF PORTERVILLE  
 ASSESSOR'S MAPS BK. 246, PG. 15.  
 COUNTY OF TULARE, CALIF.

NOTE — ASSESSOR'S BLOCK NUMBERS SHOWN IN ELLIPSES  
 ASSESSOR'S PARCEL NUMBERS SHOWN IN CIRCLES