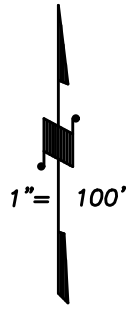
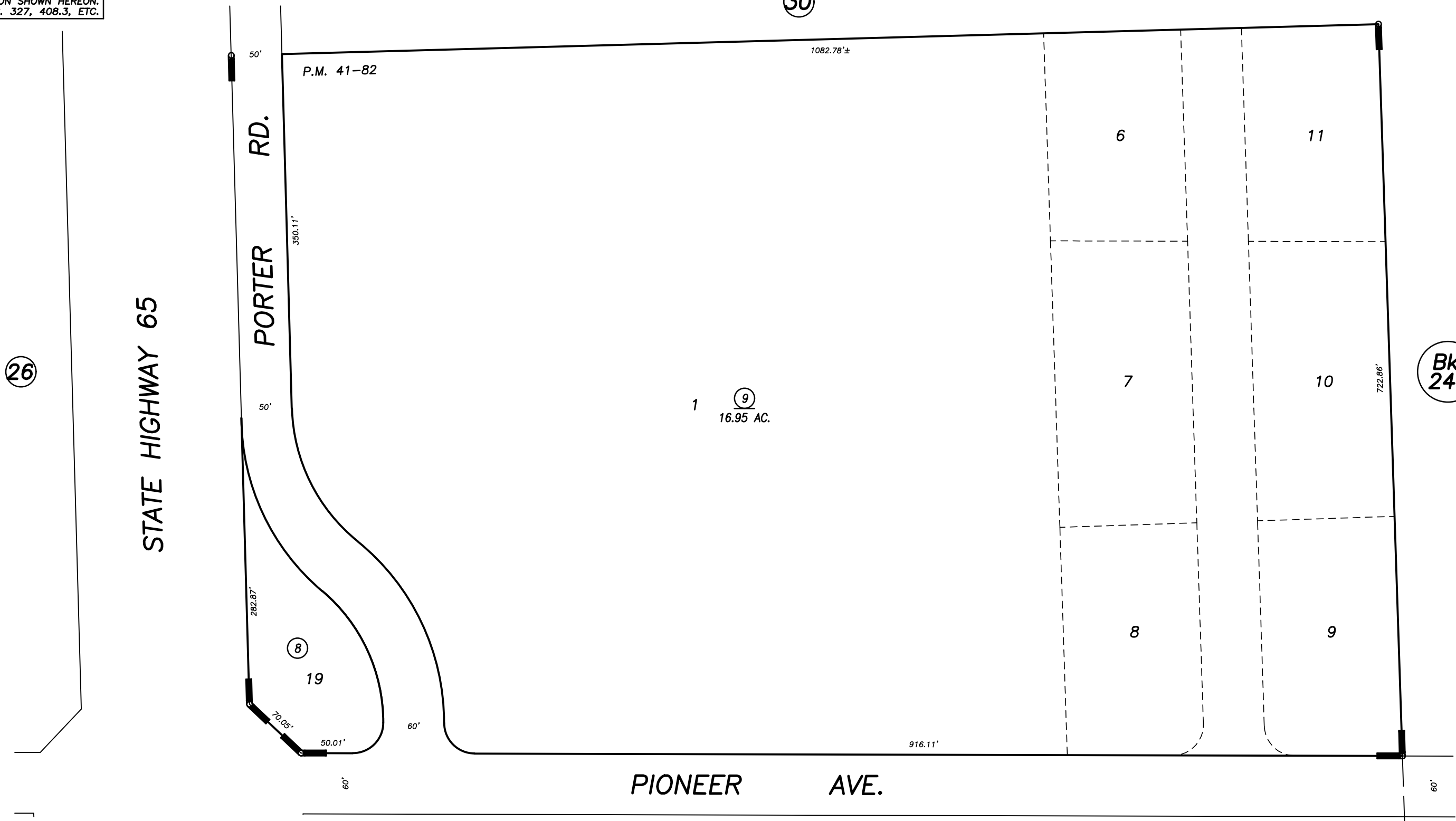


DISCLAIMER
 THIS MAP WAS PREPARED FOR LOCAL PROPERTY ASSESSMENT PURPOSES ONLY AND THE PARCELS SHOWN HEREON MAY NOT COMPLY WITH STATE AND LOCAL SUBDIVISION ORDINANCES, AND NO LIABILITY IS ASSUMED FOR THE USE OF THE INFORMATION SHOWN HEREON. R & T CODE SEC. 327, 408.3, ETC.

N1/2 OF NE1/4 OF NE1/4 SEC.22, T.21S., R.27E., M.D.B.&M.

Tax Area Code 246-31
 4-000



POR. PARCEL MAP 4078, P.M. 41-82
 POR. RECORD OF SURVEY, L.S. 17-85 (HWY. 65)

21

CITY OF PORTERVILLE
 ASSESSOR'S MAPS BK. 246 , PG. 31
 COUNTY OF TULARE, CALIFORNIA, U.S.A.

NOTE: Assessor's Parcel Numbers Shown in Circles 1 123
 Assessor's Block Numbers Shown in Ellipses

2017-0037615	03/06/2019	WAC
REVISION	DATE	TECH