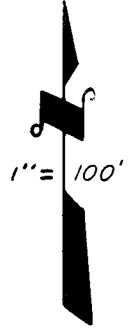
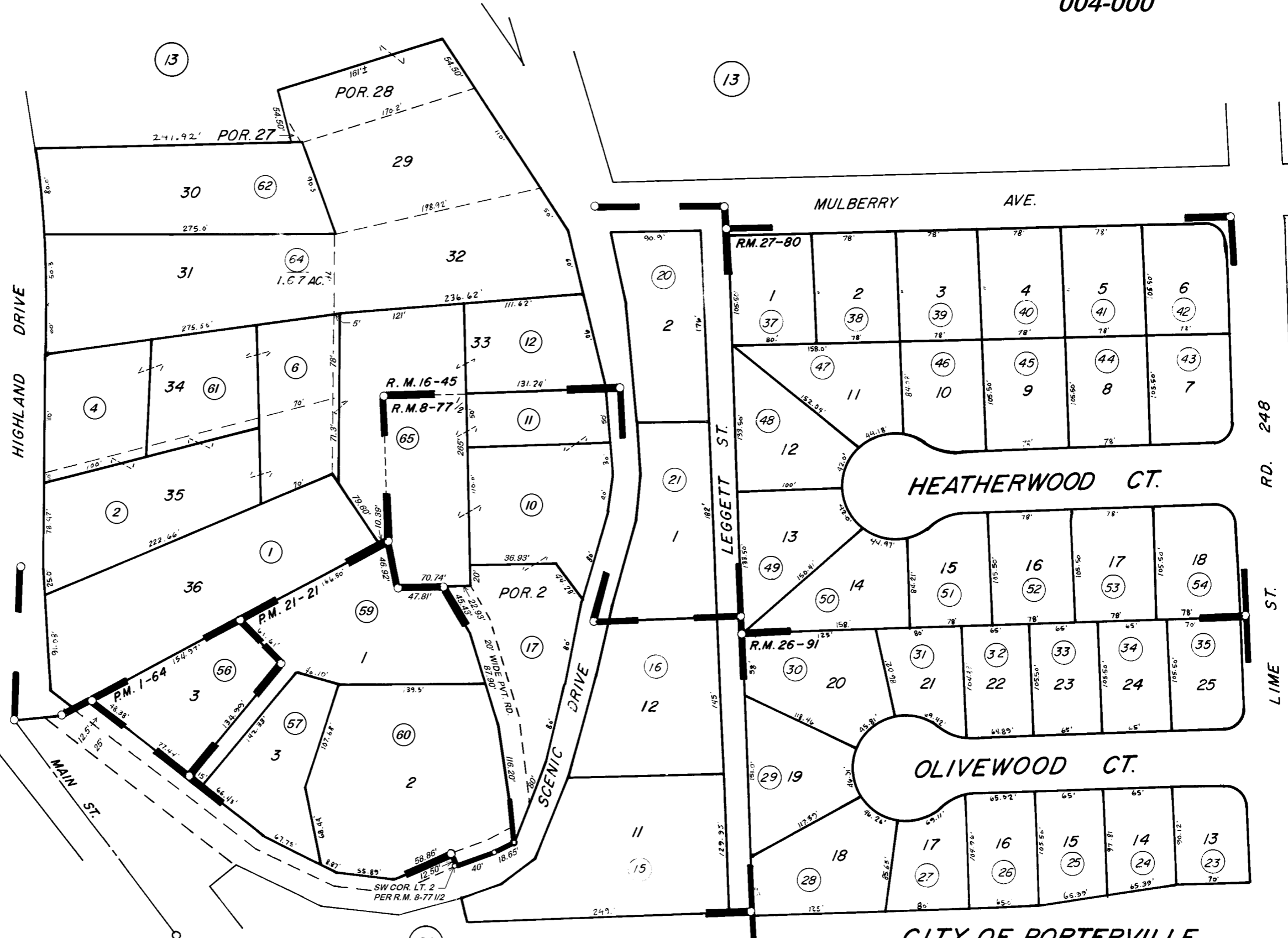


DISCLAIMER
 THIS MAP WAS PREPARED FOR LOCAL PROPERTY ASSESSMENT PURPOSES ONLY. THE PARCELS SHOWN HEREON MAY NOT COMPLY WITH STATE AND LOCAL SUBDIVISION ORDINANCES. NO LIABILITY IS ASSUMED FOR THE USE OF THE INFORMATION HEREON. R & T CODE SEC. 327, 408.3, ETC.
 REVISED: 06/29/2016
 REASON: TRAC CHANGE ONLY
 CAD TECH: LLB



BK.248

POR. SCENIC HEIGHTS, R.M. 8-77 1/2
 POR. GRAND VIEW TRACT, R.M. 16-45
 POR. OLIVEWOOD HOMES UNIT NO. 1, R.M. 26-91

OLIVEWOOD HOMES UNIT NO. 2, R.M. 27-80
 PARCEL MAP 64, P.M. 1-64
 PARCEL MAP 2020, P.M. 21-21

CITY OF PORTERVILLE
 ASSESSOR'S MAPS BK. 247, PG. 14
 COUNTY OF TULARE, CALIF.

NOTE--ASSESSOR'S BLOCK NUMBERS SHOWN IN ELLIPSES
 ASSESSOR'S PARCEL NUMBERS SHOWN IN CIRCLES