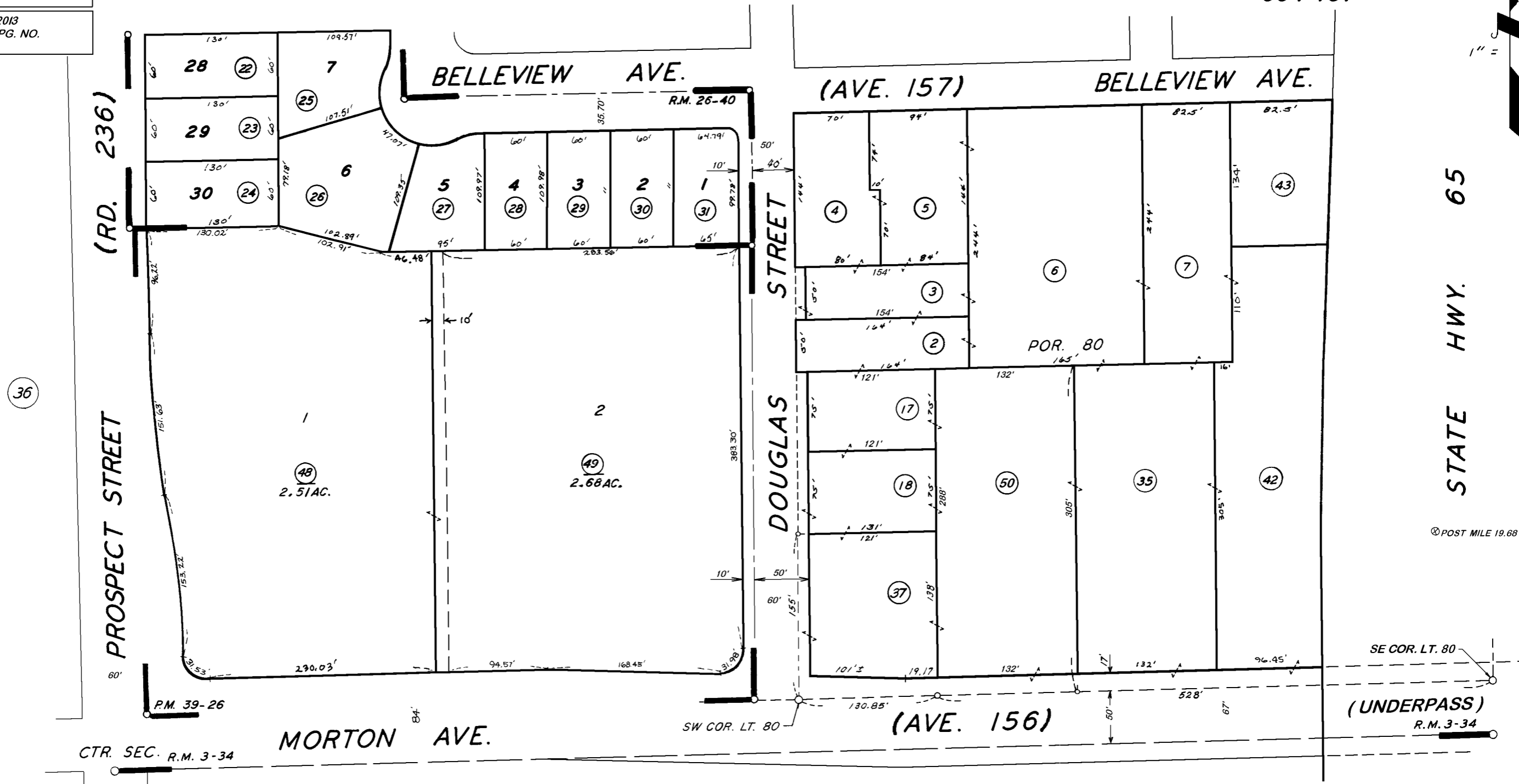
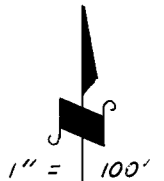


DISCLAIMER

THIS MAP WAS PREPARED FOR LOCAL PROPERTY ASSESSMENT PURPOSES ONLY. THE PARCELS SHOWN HEREON MAY NOT COMPLY WITH STATE AND LOCAL SUBDIVISION ORDINANCES. NO LIABILITY IS ASSUMED FOR THE USE OF THE INFORMATION HEREON.

REVISED: 12/27/2013
 REASON: ADJ. PG. NO.
 CAD TECH: JRS



POR. PIONEER LAND CO'S. FIRST SUB., R.M. 3-34
 SHERMAN MANOR, R.M. 26-40
 PARCEL MAP 3823, P.M. 39-26

CITY OF PORTERVILLE
 ASSESSOR'S MAPS BK. 251, PG. 09.
 COUNTY OF TULARE, CALIF.

NOTE — ASSESSOR'S BLOCK NUMBERS SHOWN IN ELLIPSES
 ASSESSOR'S PARCEL NUMBERS SHOWN IN CIRCLES