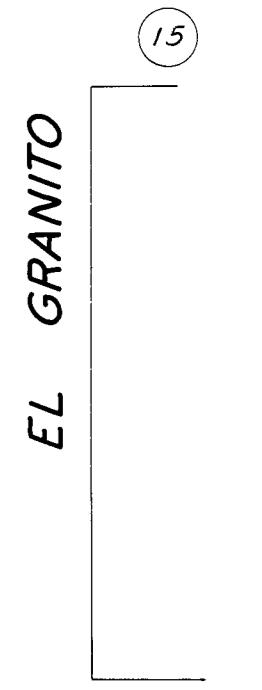
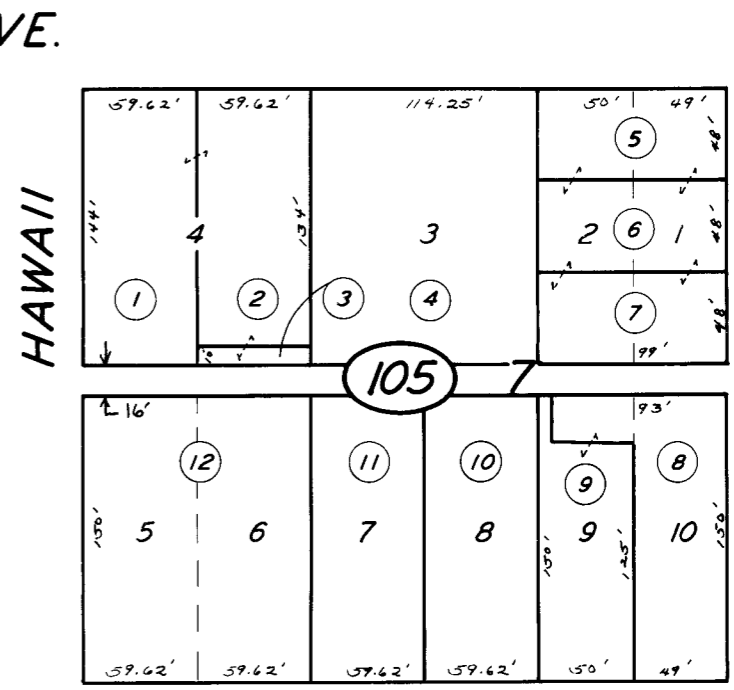
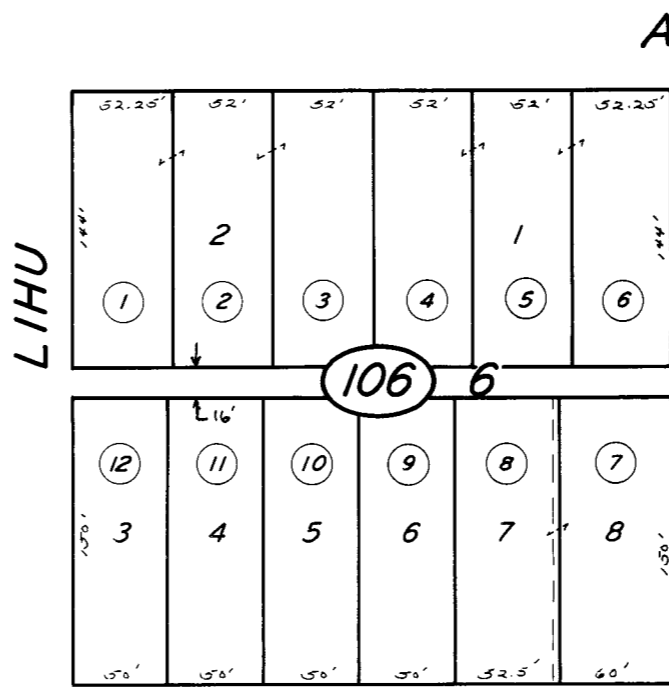
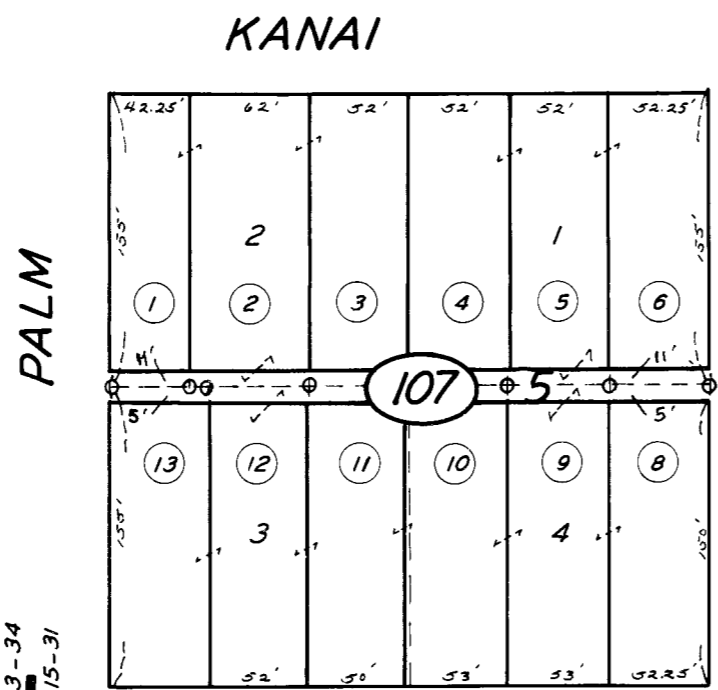
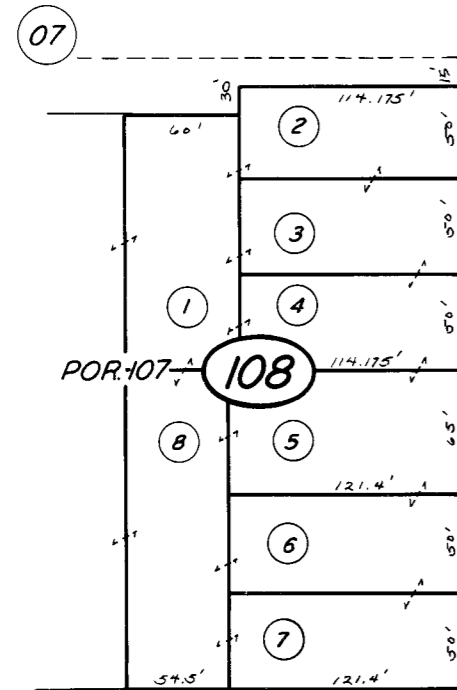
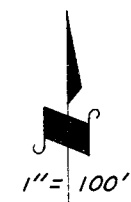
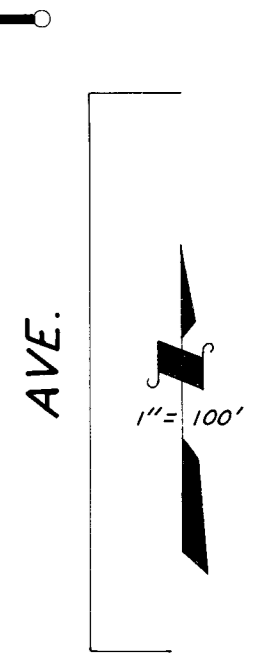
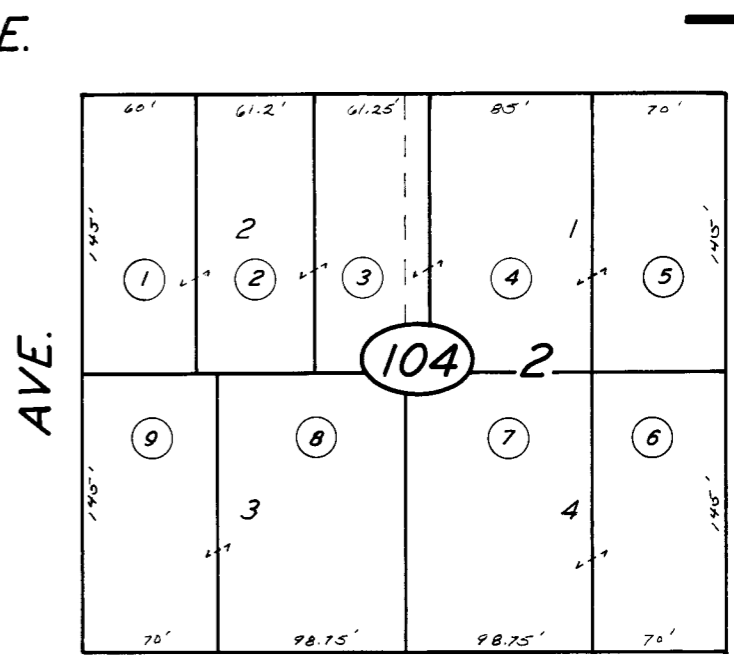
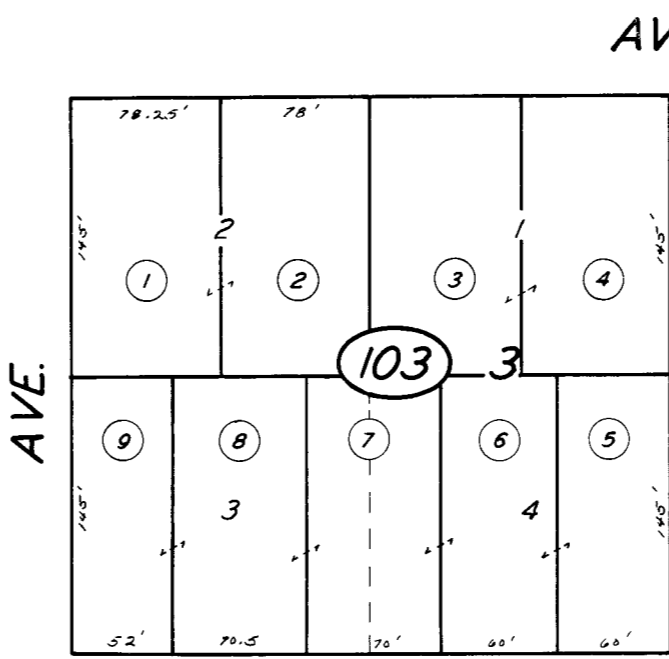
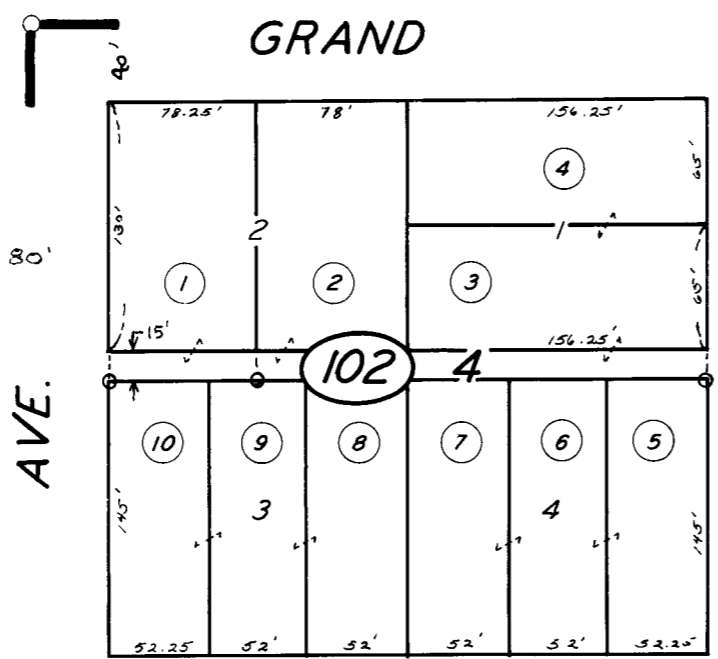
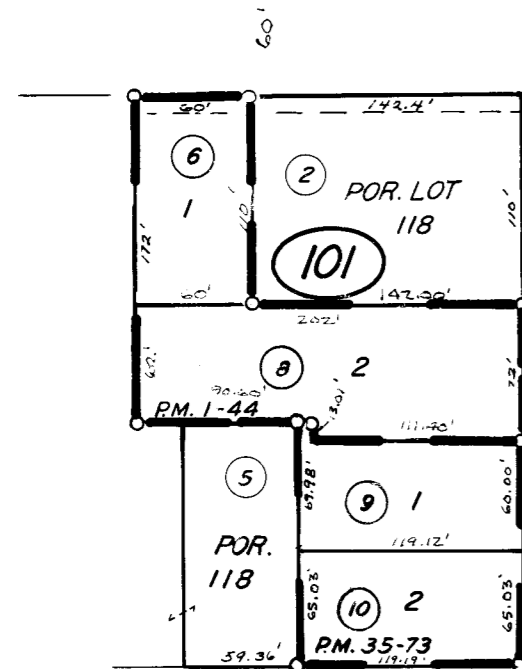


11



R.M. 3-34
R.M. 15-31

BELLEVUE

AVE.

09

CITY OF PORTERVILLE

POR. PIONEER LAND CO. 1st. SUB., R.M. 3-34
 POR. THOMAS ACRES, R.M. 15-31
 PARCEL MAP 44, P.M. 1-44
 PARCEL MAP 3471, P.M. 35-73

ASSESSOR'S MAPS BK. 252, PG. 10.
 COUNTY OF TULARE, CALIF.

NOTE -- ASSESSOR'S BLOCK NUMBERS SHOWN IN ELLIPSES
 ASSESSOR'S PARCEL NUMBERS SHOWN IN CIRCLES

