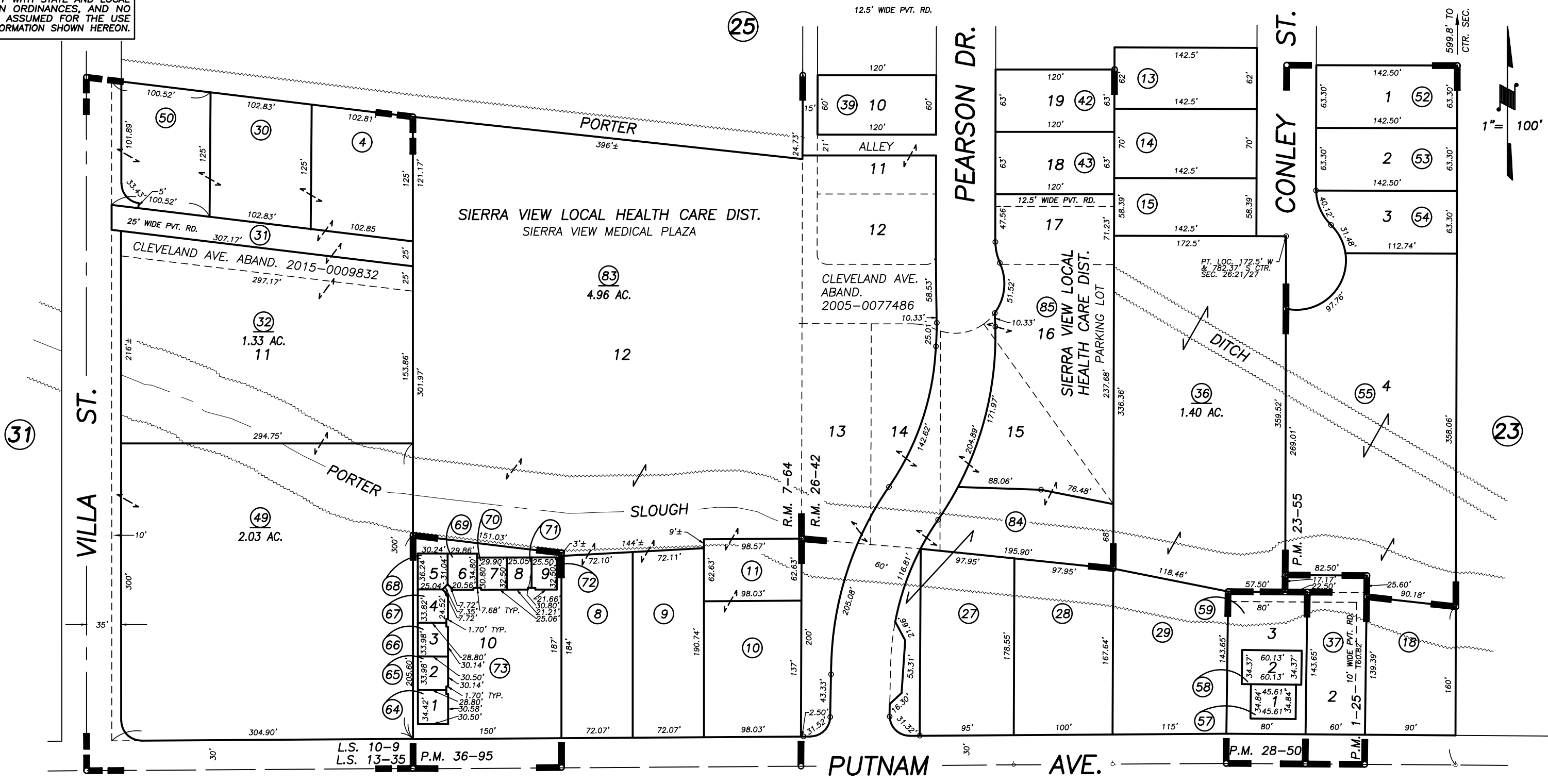


DISCLAIMER
THIS MAP WAS PREPARED FOR LOCAL PROPERTY ASSESSMENT PURPOSES ONLY AND THE PARCELS SHOWN HEREON MAY NOT COMPLY WITH STATE AND LOCAL SUBDIVISION ORDINANCES, AND NO LIABILITY IS ASSUMED FOR THE USE OF THE INFORMATION SHOWN HEREON.



POR. WILLIAMS & PREMO VILLA TR., R.M. 7-64
 POR. MORTON GARDENS, R.M. 26-42
 PARCEL MAP 25, P.M. 1-25
 RECORD OF SURVEY, L.S. 10-9
 PARCEL MAP 2254, P.M. 23-55
 PARCEL MAP 2749, P.M. 28-50
 RECORD OF SURVEY, L.S. 13-35

CITY OF PORTERVILLE
 ASSESSOR'S MAPS BK. 252 , PG. 26
 COUNTY OF TULARE, CALIFORNIA, U.S.A.

NOTE: Assessor's Parcel Numbers Shown in Circles
 Assessor's Block Numbers Shown in Ellipses

2015-0009832	03/31/2015	ASG
REVISION	DATE	TECH