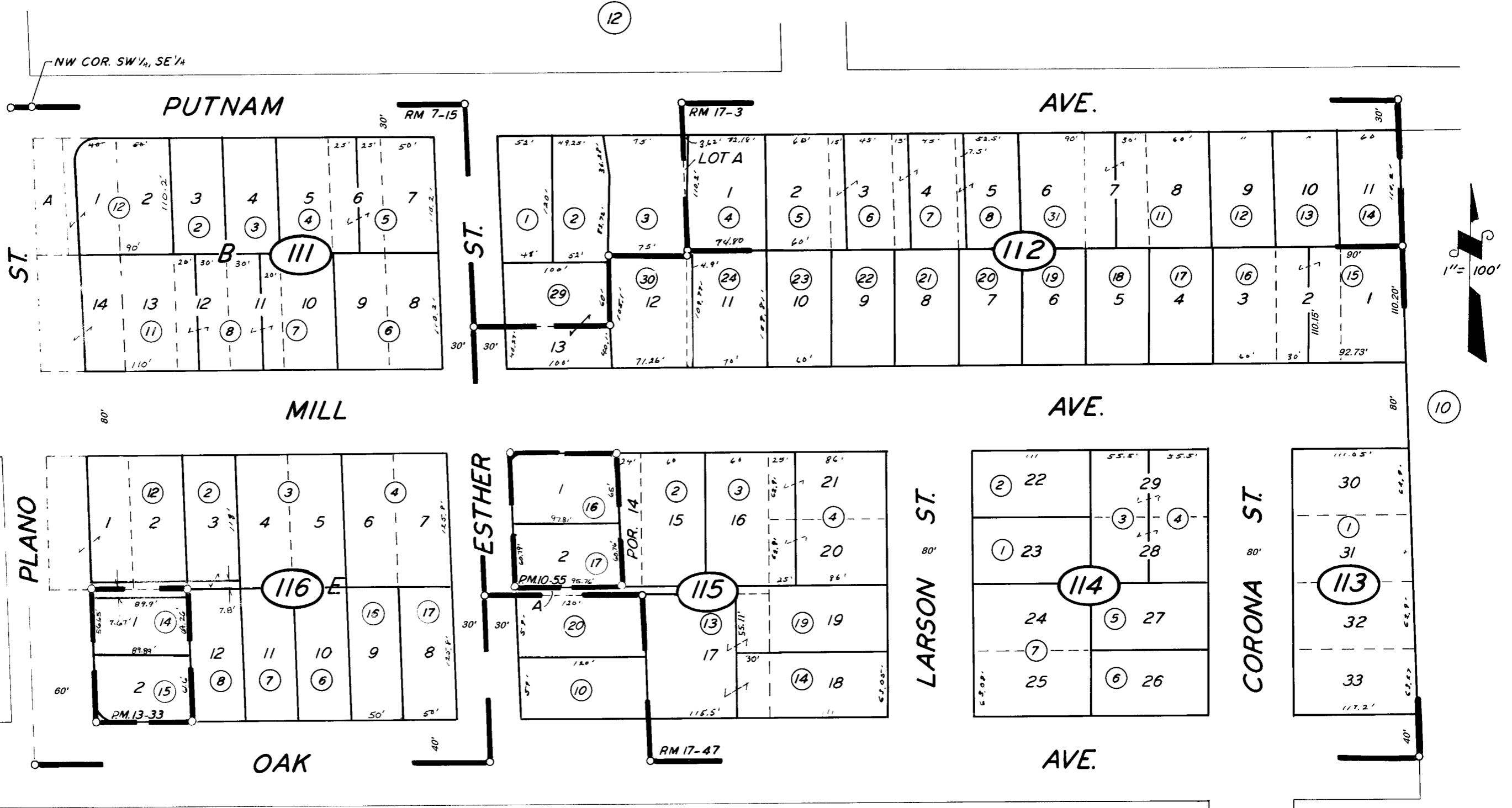


DISCLAIMER

THIS MAP WAS PREPARED FOR LOCAL PROPERTY ASSESSMENT PURPOSES ONLY. THE PARCELS SHOWN HEREON MAY NOT COMPLY WITH STATE AND LOCAL SUBDIVISION ORDINANCES. NO LIABILITY IS ASSUMED FOR THE USE OF THE INFORMATION HEREON. R & T CODE SEC. 327, 408.3, ETC.

REVISED: 09/07/2017
REASON: 2017-0013131
CAD TECH: AL



POR. MILLWOOD ADD. R.M. 7-15
BRADRIK SUB. R.M. 17-3
BRADRIK COURT R.M. 17-47
PARCEL MAP 954, P.M. 10-55
PARCEL MAP 1232, P.M. 13-33

CITY OF PORTERVILLE
ASSESSOR'S MAPS BK. 253, PG. 11.
COUNTY OF TULARE, CALIF.

NOTE — ASSESSOR'S BLOCK NUMBERS SHOWN IN ELLIPSES
ASSESSOR'S PARCEL NUMBERS SHOWN IN CIRCLES

