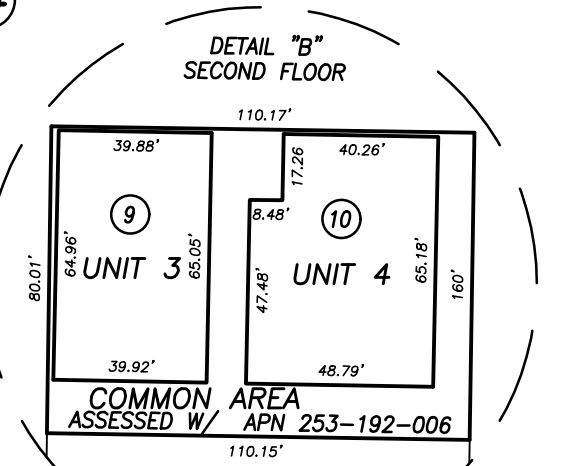
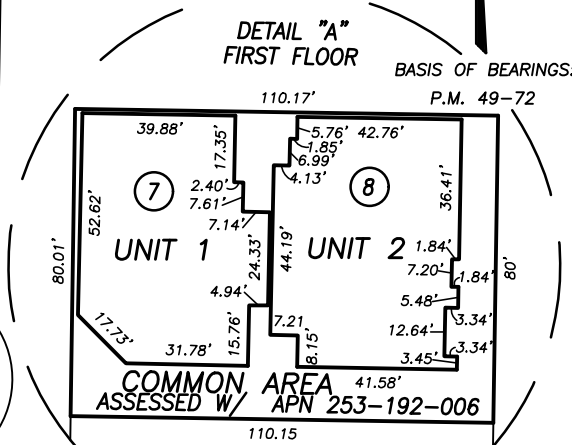
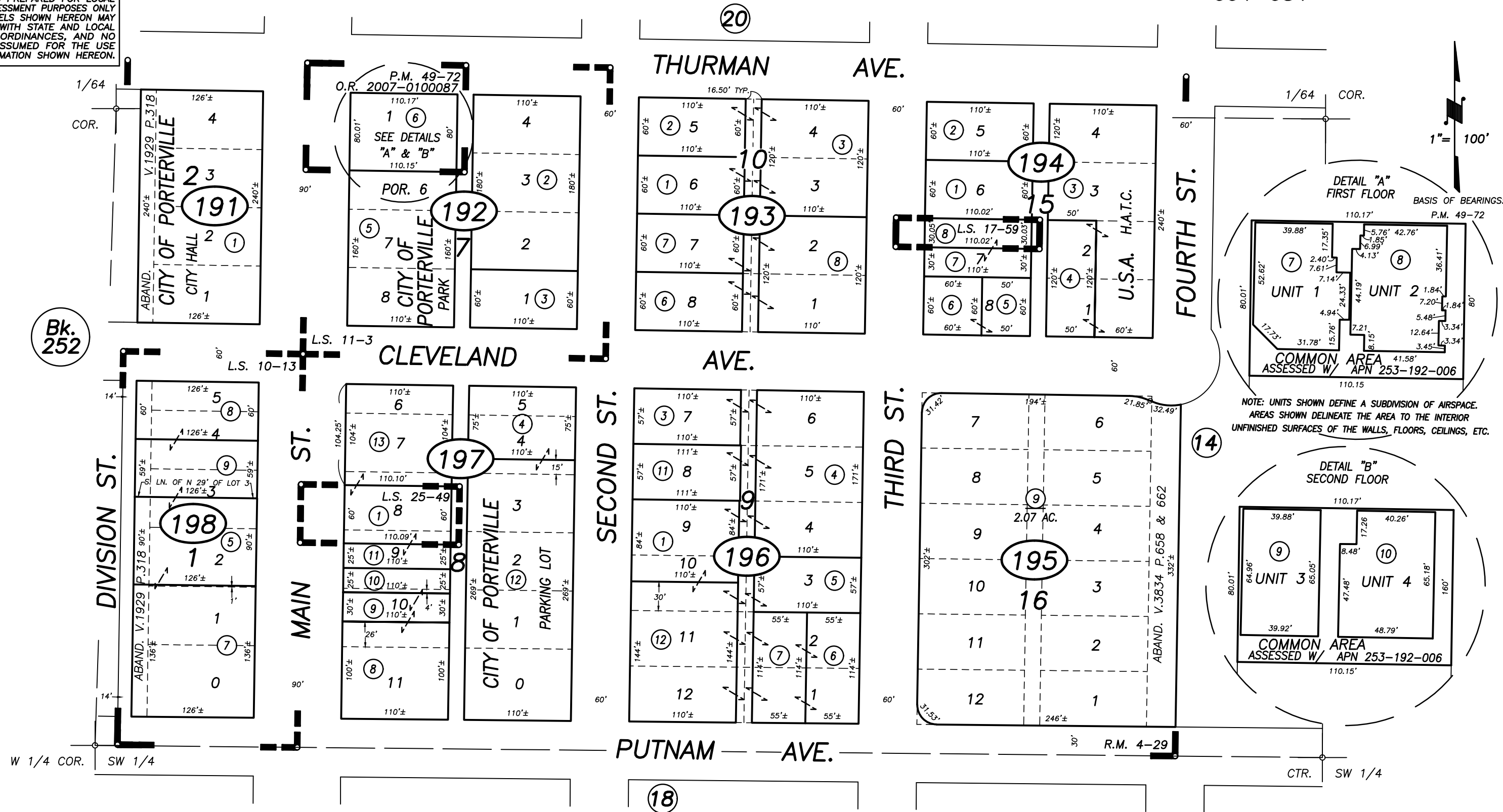
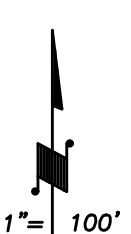
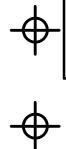


DISCLAIMER

THIS MAP WAS PREPARED FOR LOCAL PROPERTY ASSESSMENT PURPOSES ONLY AND THE PARCELS SHOWN HEREON MAY NOT COMPLY WITH STATE AND LOCAL SUBDIVISION ORDINANCES, AND NO LIABILITY IS ASSUMED FOR THE USE OF THE INFORMATION SHOWN HEREON.



NOTE: UNITS SHOWN DEFINE A SUBDIVISION OF AIRSPACE. AREAS SHOWN DELINEATE THE AREA TO THE INTERIOR UNFINISHED SURFACES OF THE WALLS, FLOORS, CEILINGS, ETC.

POR. PIONEER & MURPHY'S ADD., R.M. 4-29  
RECORD OF SURVEY, L.S. 10-13  
RECORD OF SURVEY, L.S. 11-3  
RECORD OF SURVEY, L.S. 17-59  
RECORD OF SURVEY, L.S. 25-49  
PARCEL MAP NO. 4867, P.M. 49-72

CENTENNIAL PLAZA CONDO PLAN O.R. 2007-0107289

CITY OF PORTERVILLE  
ASSESSOR'S MAPS BK. 253 , PG. 19  
COUNTY OF TULARE, CALIFORNIA, U.S.A.

NOTE: Assessor's Parcel Numbers Shown in Circles  
Assessor's Block Numbers Shown in Ellipses

2007-0107289	1/27/2009	JLC
REVISION	DATE	TECH