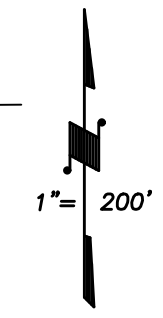
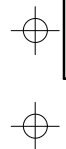
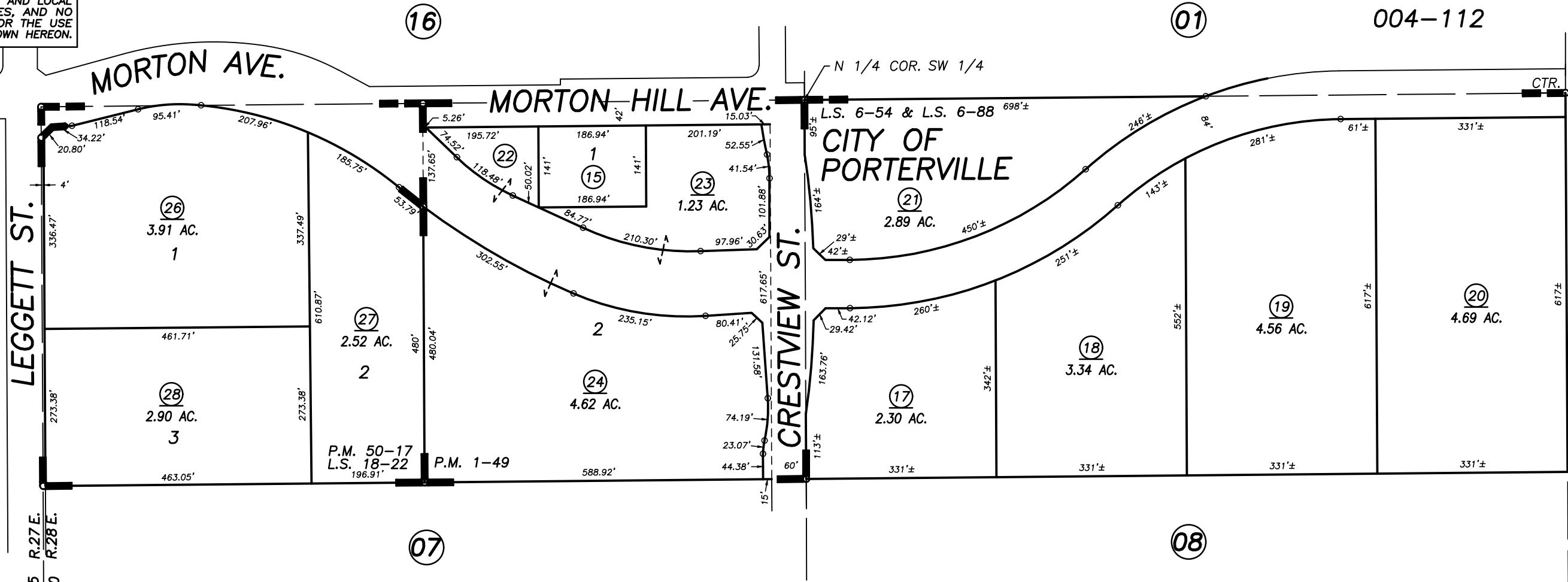


004-000
004-072
004-112

DISCLAIMER
THIS MAP WAS PREPARED FOR LOCAL PROPERTY ASSESSMENT PURPOSES ONLY AND THE PARCELS SHOWN HEREON MAY NOT COMPLY WITH STATE AND LOCAL SUBDIVISION ORDINANCES, AND NO LIABILITY IS ASSUMED FOR THE USE OF THE INFORMATION SHOWN HEREON.



BASIS OF BEARINGS:
O.R. 2001-0075709



Bk. 253

W 1/4 COR. SW 1/4

CTR. SW 1/4

E 1/4 COR. SW 1/4

POR. RECORD OF SURVEY, L.S. 6-54
POR. RECORD OF SURVEY, L.S. 6-88
PARCEL MAP NO. 49, P.M. 1-49
POR. RECORD OF SURVEY, L.S. 13-70 (SEC. 30, ETC.)
RECORD OF SURVEY, L.S. 18-22
PARCEL MAP NO. 4912, P.M. 50-17

CITY OF PORTERVILLE
ASSESSOR'S MAPS BK. 254 , PG. 03
COUNTY OF TULARE, CALIFORNIA, U.S.A.

NOTE: Assessor's Parcel Numbers Shown in Circles (1) (123)
Assessor's Block Numbers Shown in Ellipses

2008-0048347	03/31/2015	ASG
REVISION	DATE	TECH