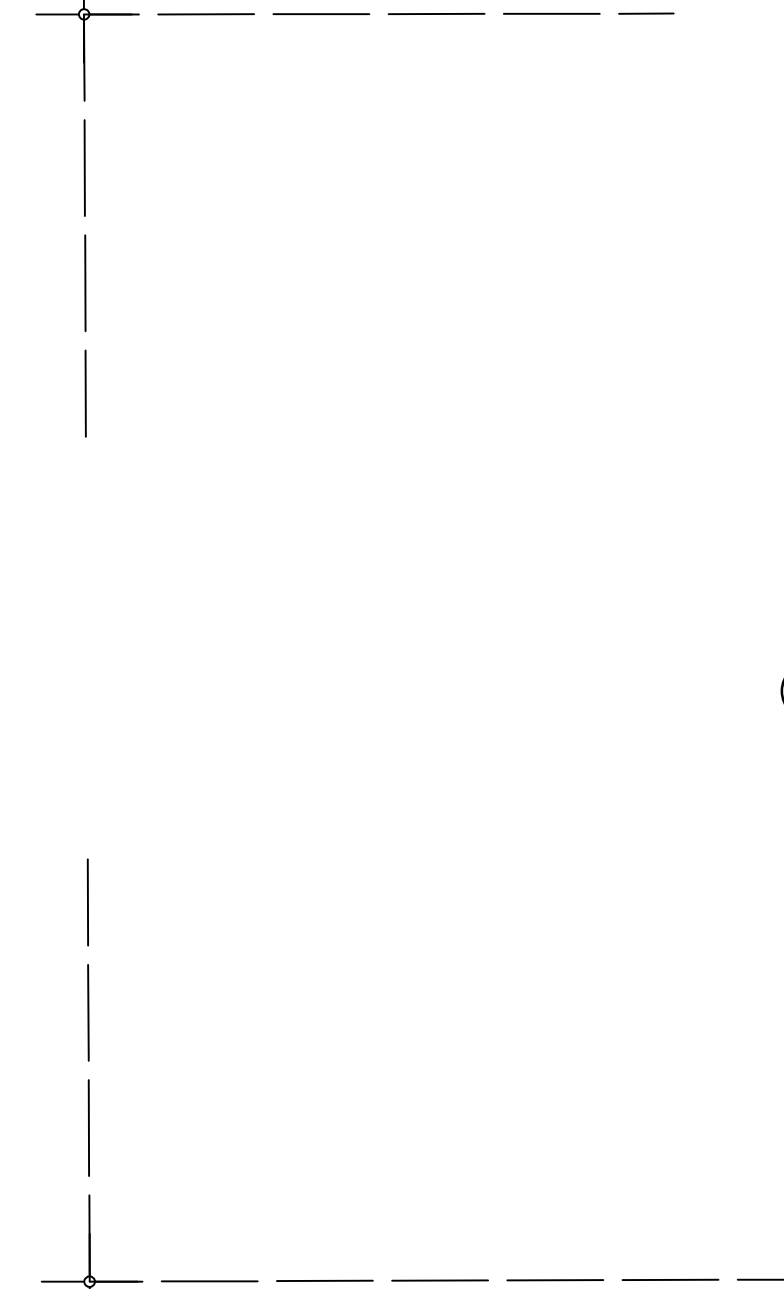


**DISCLAIMER**  
 THIS MAP WAS PREPARED FOR LOCAL PROPERTY ASSESSMENT PURPOSES ONLY AND THE PARCELS SHOWN HEREON MAY NOT COMPLY WITH STATE AND LOCAL SUBDIVISION ORDINANCES, AND NO LIABILITY IS ASSUMED FOR THE USE OF THE INFORMATION SHOWN HEREON.

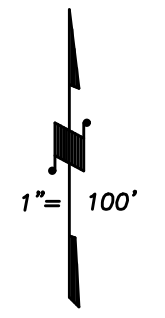
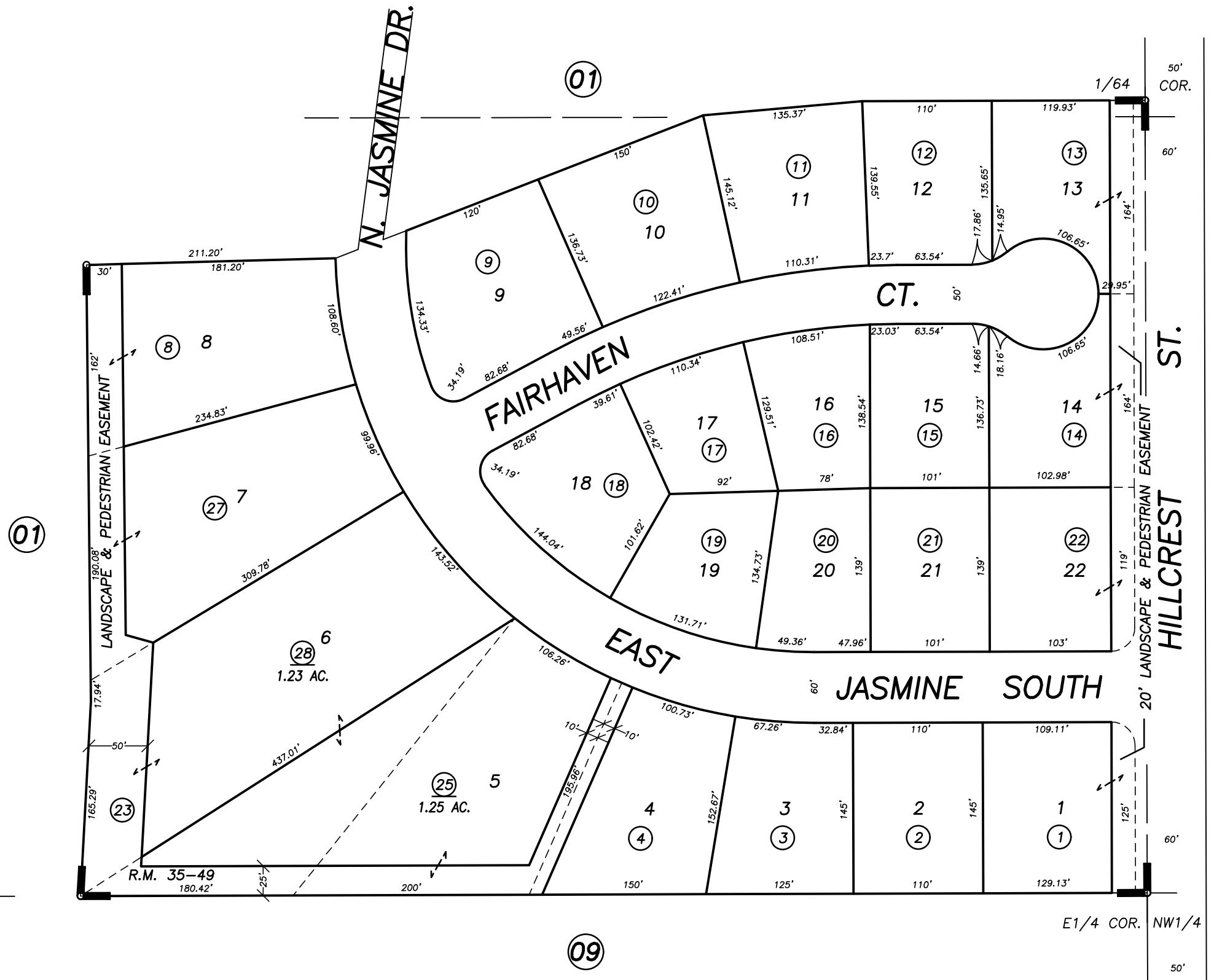
S1/2 OF NE1/4 OF NW1/4 SECTION 30, T.21S., R.28E., M.D.B.&M.

Tax Area Code **254-11**  
 004-059

1/64 COR.



CTR. NW1/4



POR. JASMINE RANCH PHASE 1, R.M. 35-49

CITY OF PORTERVILLE  
 ASSESSOR'S MAPS BK. 254 , PG. 11  
 COUNTY OF TULARE, CALIFORNIA, U.S.A.

NOTE: Assessor's Parcel Numbers Shown in Circles (1) (123)  
 Assessor's Block Numbers Shown in Elipses

ADJ. PG. UPDATE	06/30/2008	JRS
REVISION	DATE	TECH