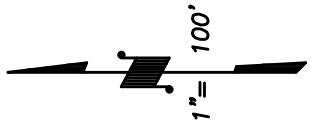


DISCLAIMER
 THIS MAP WAS PREPARED FOR LOCAL PROPERTY ASSESSMENT PURPOSES ONLY AND THE PARCELS SHOWN HEREON MAY NOT COMPLY WITH STATE AND LOCAL SUBDIVISION ORDINANCES, AND NO LIABILITY IS ASSUMED FOR THE USE OF THE INFORMATION SHOWN HEREON.

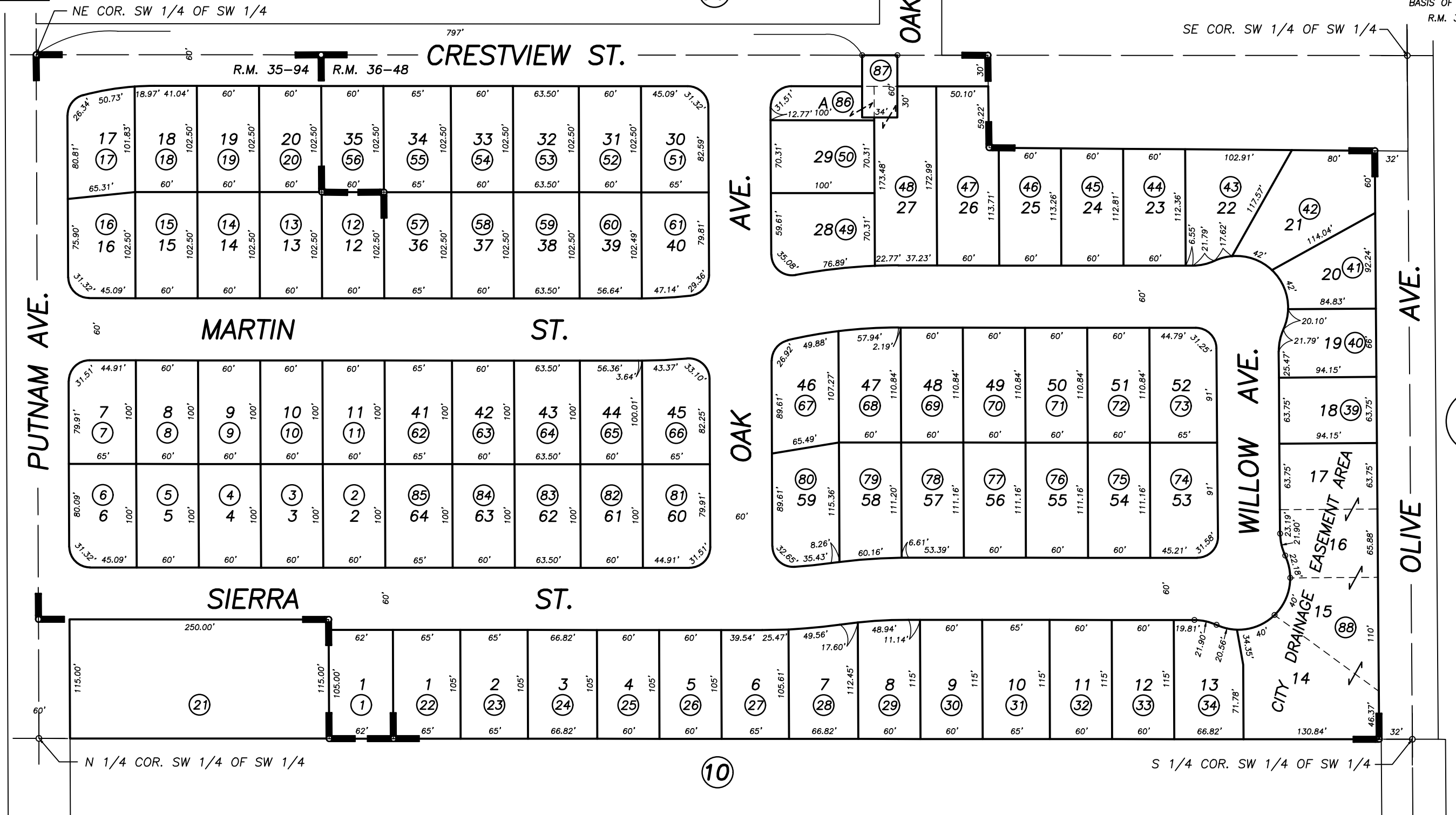
POR. SW 1/4 OF SW 1/4 SEC. 30, T.21S., R.28E., M.D.B. & M.

Tax Area Code 254-12

4-049



BASIS OF BEARINGS:
R.M. 35-94



CRESTVIEW HEIGHTS UNIT 1, R.M. 35-94
 CRESTVIEW HEIGHTS PHASES 2 & 3, R.M. 36-48

CITY OF PORTERVILLE
 ASSESSOR'S MAPS BK. 254 , PG. 12
 COUNTY OF TULARE, CALIFORNIA, U.S.A.

NOTE: Assessor's Parcel Numbers Shown in Circles (1) (123)
 Assessor's Block Numbers Shown in Ellipses

COMBINE APN 35-38	11/01/2011	KMS
REVISION	DATE	TECH