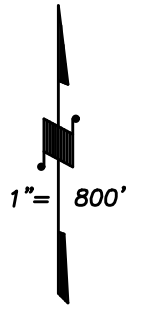
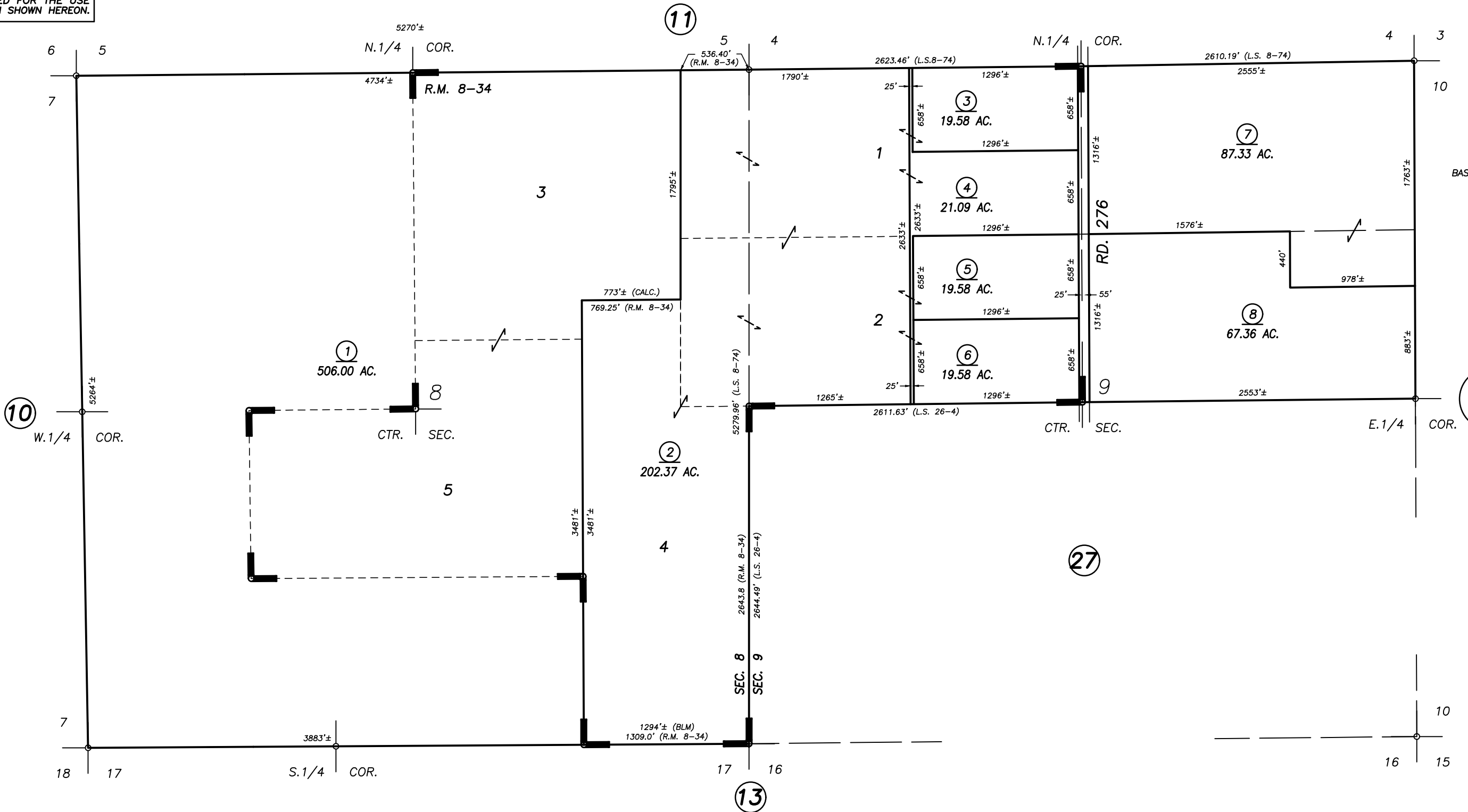


**DISCLAIMER**  
THIS MAP WAS PREPARED FOR LOCAL PROPERTY ASSESSMENT PURPOSES ONLY AND THE PARCELS SHOWN HEREON MAY NOT COMPLY WITH STATE AND LOCAL SUBDIVISION ORDINANCES, AND NO LIABILITY IS ASSUMED FOR THE USE OF THE INFORMATION SHOWN HEREON.



BASIS OF BEARINGS:  
L.S. 26-4



**Bk. 284**

SUBDIVISION OF ESTATE OF CHRISTINE S. LEHMANN, R.M. 8-34  
POR. RECORD OF SURVEY, L.S. 8-74 (SEC. 9 ETC.)  
POR. RECORD OF SURVEY, L.S. 26-4

VICINITY OF STRATHMORE  
ASSESSOR'S MAPS BK. 255 , PG. 12  
COUNTY OF TULARE, CALIFORNIA, U.S.A.

NOTE: Assessor's Parcel Numbers Shown in Circles (1) (123)  
Assessor's Block Numbers Shown in Elipses (1) (123)

CAD CONVERSION	09/30/2003	KMS
REVISION	DATE	TECH