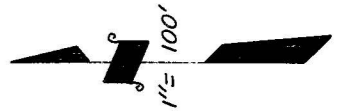


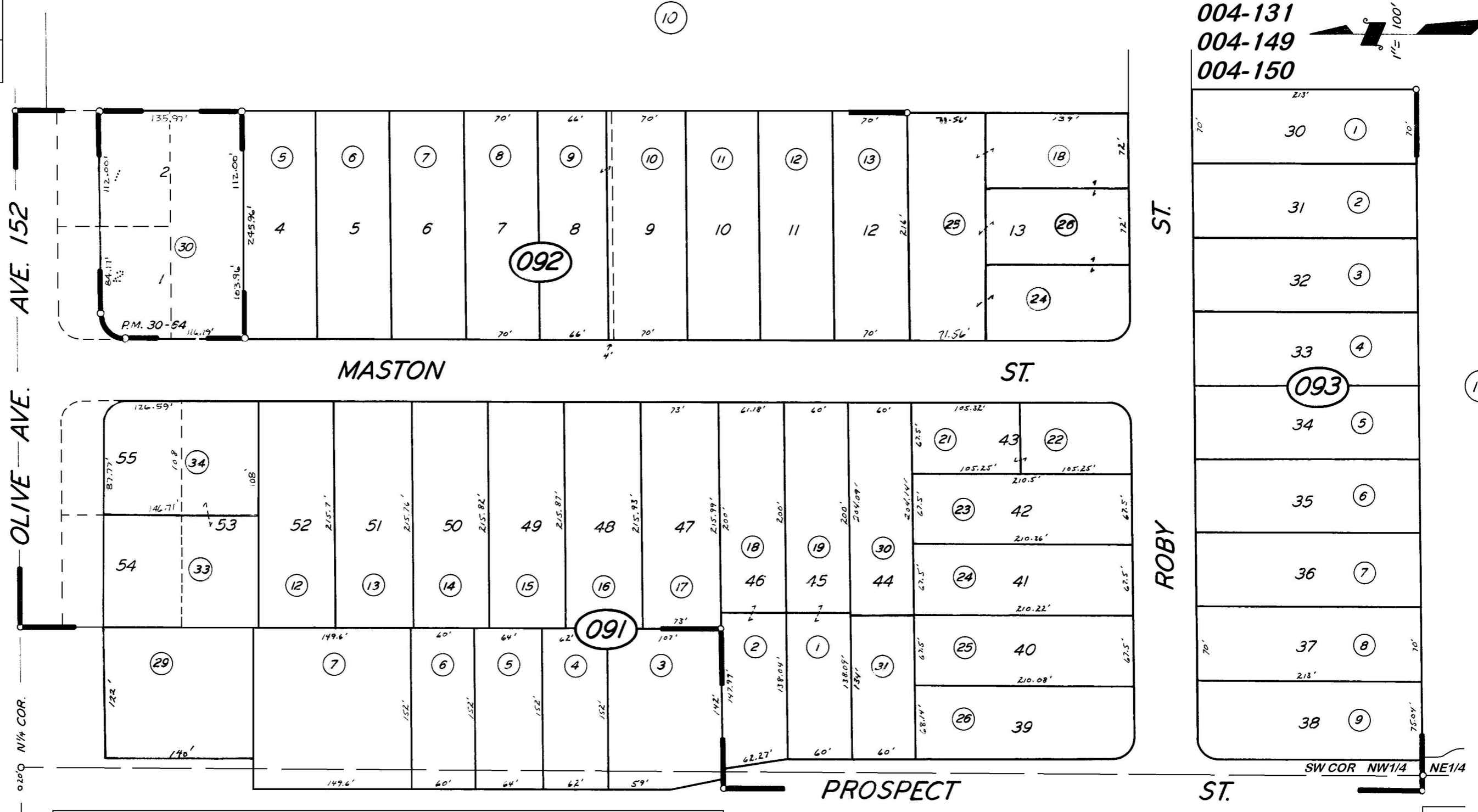
DISCLAIMER
 THIS MAP WAS PREPARED FOR LOCAL PROPERTY ASSESSMENT PURPOSES ONLY. THE PARCELS SHOWN HEREON MAY NOT COMPLY WITH STATE AND LOCAL SUBDIVISION ORDINANCES. NO LIABILITY IS ASSUMED FOR THE USE OF THE INFORMATION HEREON. R & T CODE SEC. 327, 408.3, ETC.
 REVISED: 06/05/2019
 REASON: TRAC UPDATE
 CAD TECH: CFG

POR. NW 1/4 OF NE 1/4 & POR. NE 1/4 OF NW 1/4 SEC. 34, T.21S., R. 27E., M.D.B. & M.

TAX CODE AREA **259-09**
 004-042
 004-048
 004-131
 004-149
 004-150



BK.251



POR. TRACT NO. 45, R.M. 19-82
 PARCEL MAP NO. 2963, P.M. 30-64

CITY OF PORTERVILLE
 ASSESSOR'S MAPS BK. 259, PG. 09
 COUNTY OF TULARE, CALIF.

NOTE — ASSESSOR'S BLOCK NUMBERS SHOWN IN ELLIPSES
 ASSESSOR'S PARCEL NUMBERS SHOWN IN CIRCLES

