

**DISCLAIMER**

THIS MAP WAS PREPARED FOR LOCAL PROPERTY ASSESSMENT PURPOSES ONLY. THE PARCELS SHOWN HEREON MAY NOT COMPLY WITH STATE AND LOCAL SUBDIVISION ORDINANCES. NO LIABILITY IS ASSUMED FOR THE USE OF THE INFORMATION HEREON.

REVISED: 04/20/2011  
REASON: TRAC CHANGE ONLY  
CAD TECH: KMS

POR. NE 1/4 OF NE 1/4 SEC. 34, T.21S., R.27E., M.D.B. & M.

TAX CODE AREA

259-11

004-150

004-163

BK. 251

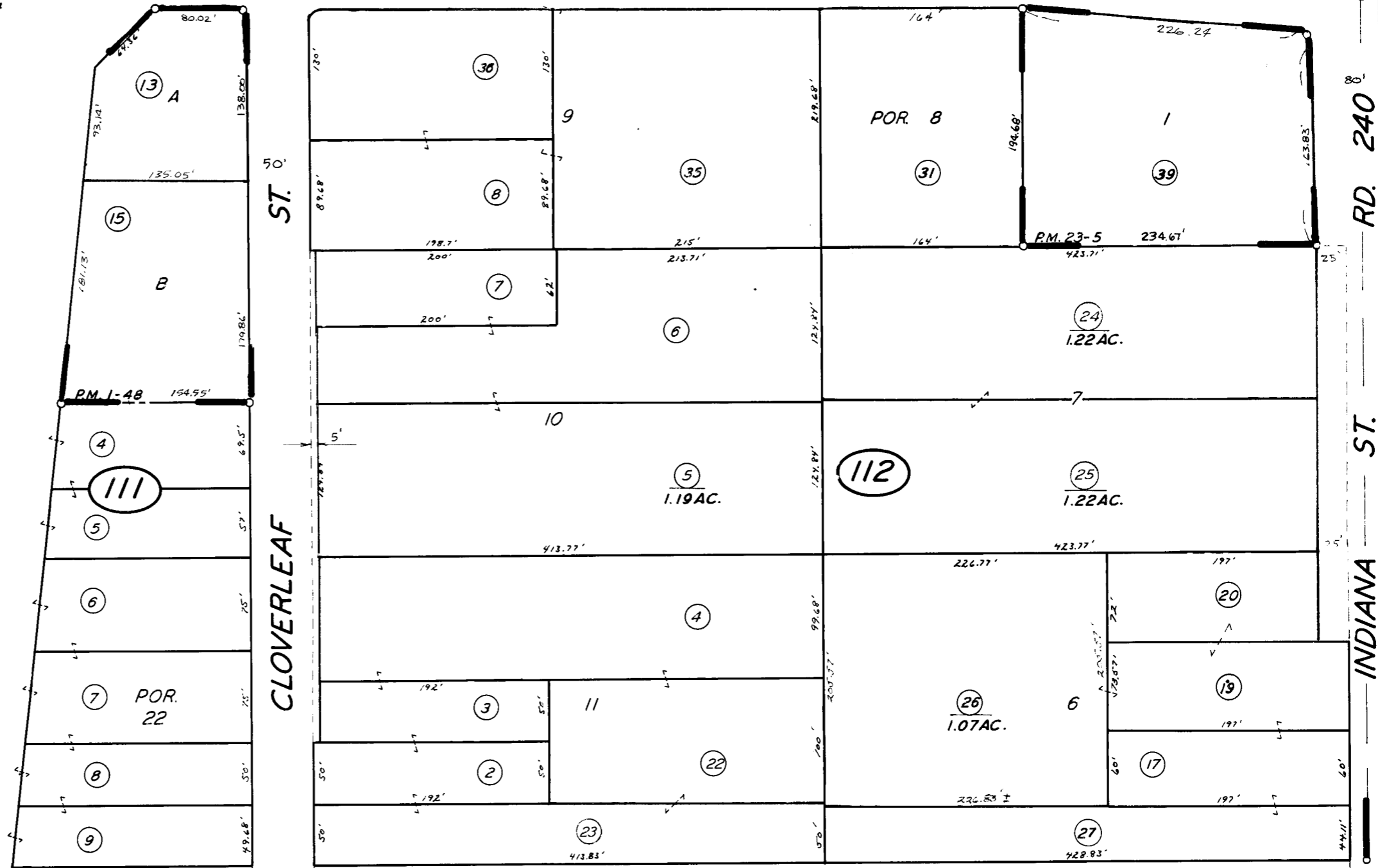
27 26

R. M. 8-29

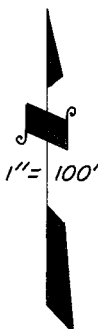
NW COR. E 1/2  
LT 24

AVE. 152 OLIVE AVE.

65 HWY. STATE



35



BK. 260

POR. CLOVER LEAF TRACT, R.M. 8-29  
PARCEL MAP 48, P.M. 1-48  
PARCEL MAP 2204, P.M. 23-5

CITY OF PORTERVILLE  
ASSESSOR'S MAPS BK. 259, PG. 11  
COUNTY OF TULARE, CALIF.

NOTE -- ASSESSOR'S BLOCK NUMBERS SHOWN IN ELLIPSES  
ASSESSOR'S PARCEL NUMBERS SHOWN IN CIRCLES

