

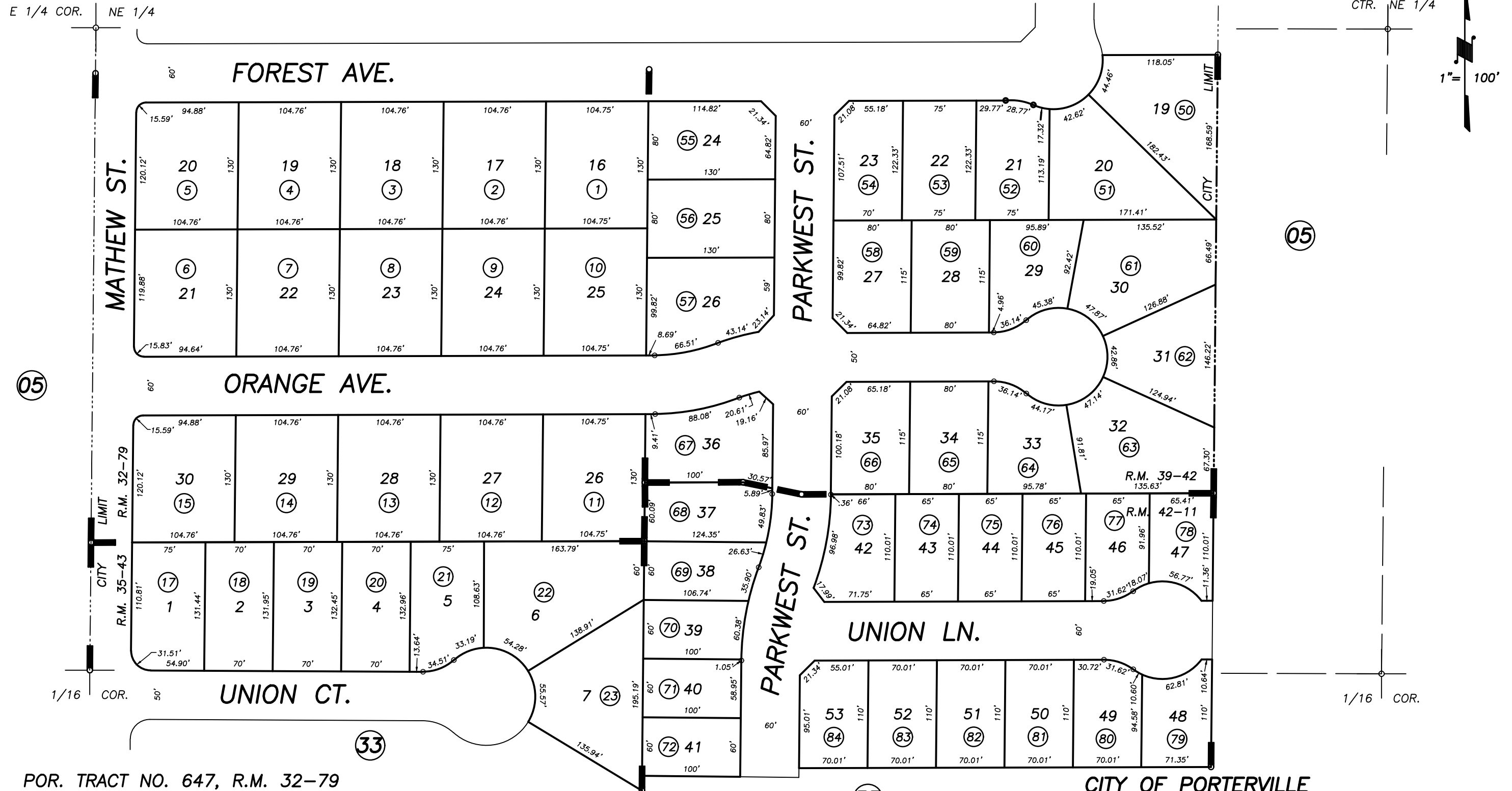
DISCLAIMER
 THIS MAP WAS PREPARED FOR LOCAL PROPERTY ASSESSMENT PURPOSES ONLY AND THE PARCELS SHOWN HEREON MAY NOT COMPLY WITH STATE AND LOCAL SUBDIVISION ORDINANCES, AND NO LIABILITY IS ASSUMED FOR THE USE OF THE INFORMATION SHOWN HEREON.

POR. N1/2 OF SW1/4 OF NE1/4 SEC.33, T.21S., R.27E., M.D.B.&M.

Tax Area Codes 259-20

004-060
 004-117

19



POR. TRACT NO. 647, R.M. 32-79
 POR. RIVERVIEW ESTATES UNIT NO. 2, R.M. 35-43
 POR. RIVERVIEW ESTATES PHASE THREE, R.M. 39-42
 POR. RIVERVIEW ESTATES PHASE FOUR, R.M. 42-11

CITY OF PORTERVILLE
 ASSESSOR'S MAPS BK. 259 , PG. 20
 COUNTY OF TULARE, CALIFORNIA, U.S.A.

NOTE: Assessor's Parcel Numbers Shown in Circles (1) (123)
 Assessor's Block Numbers Shown in Ellipses

2006-0044857	09/06/2006	MLC
REVISION	DATE	TECH