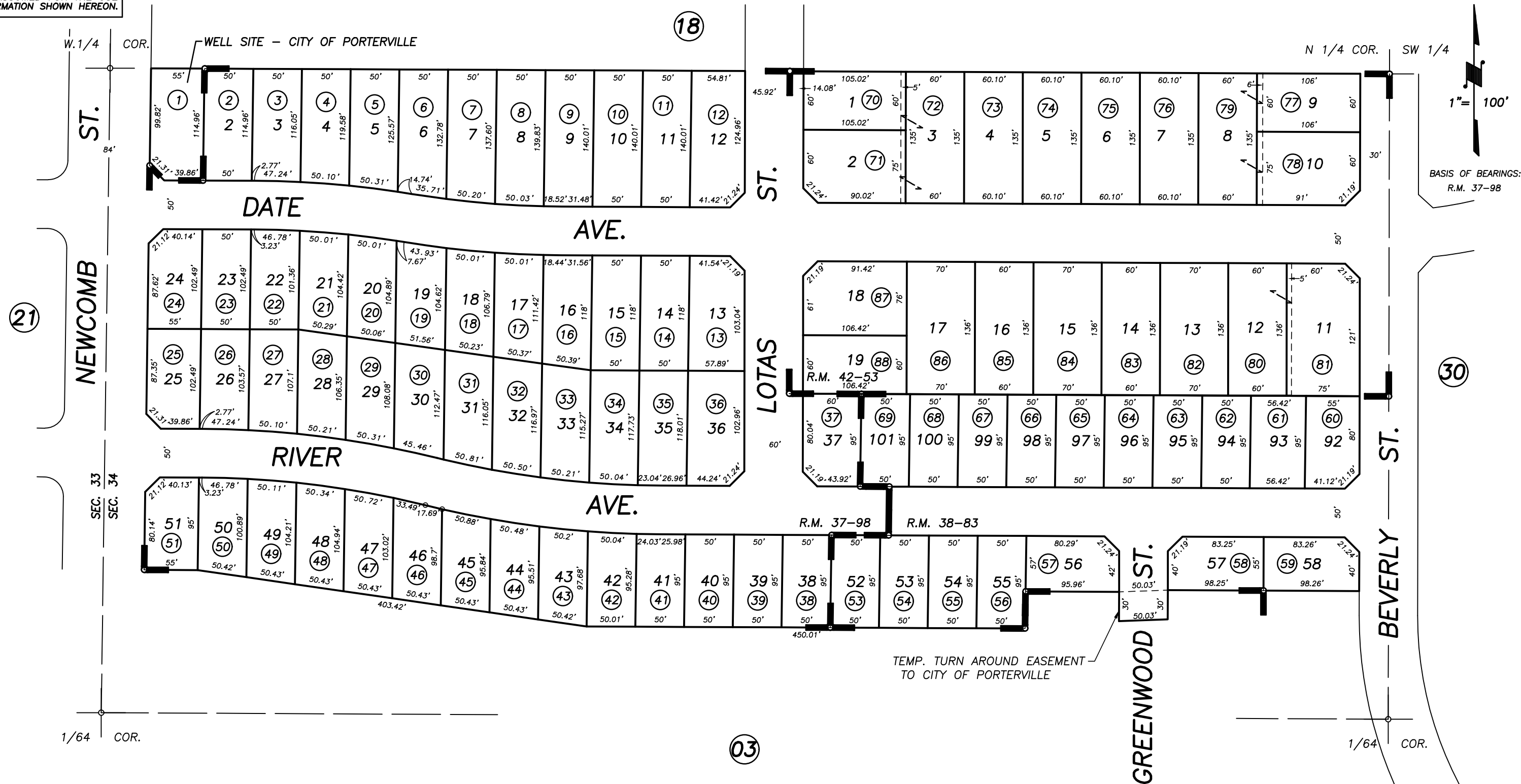


**DISCLAIMER**  
 THIS MAP WAS PREPARED FOR LOCAL PROPERTY ASSESSMENT PURPOSES ONLY AND THE PARCELS SHOWN HEREON MAY NOT COMPLY WITH STATE AND LOCAL SUBDIVISION ORDINANCES, AND NO LIABILITY IS ASSUMED FOR THE USE OF THE INFORMATION SHOWN HEREON.

N1/2 OF NW 1/4 OF SW 1/4 SEC. 34, T.21S., R.27E., M.D.B.& M.

Tax Area Code 259-28  
 004-014



RIVER SPRINGS PHASE 1, R.M. 37-98  
 POR. RIVER SPRINGS PHASE 2, R.M. 38-83  
 BEVERLY GLENN, 42-53

CITY OF PORTERVILLE  
 ASSESSOR'S MAPS BK. 259 , PG. 28  
 COUNTY OF TULARE, CALIFORNIA, U.S.A.

NOTE: Assessor's Parcel Numbers Shown in Circles (1) (123)  
 Assessor's Block Numbers Shown in Ellipses

2007-0050644	1/14/2009	JLC
REVISION	DATE	TECH