

DISCLAIMER
 THIS MAP WAS PREPARED FOR LOCAL PROPERTY ASSESSMENT PURPOSES ONLY AND THE PARCELS SHOWN HEREON MAY NOT COMPLY WITH STATE AND LOCAL SUBDIVISION ORDINANCES, AND NO LIABILITY IS ASSUMED FOR THE USE OF THE INFORMATION SHOWN HEREON.

N1/2 OF NE1/4 OF SW1/4 SEC. 02 34, T.21S., R.27E., M.D.B.& M. Tax Area Code 259-30

004-014

CTR. SEC.

NE COR. NW/4 SW/4

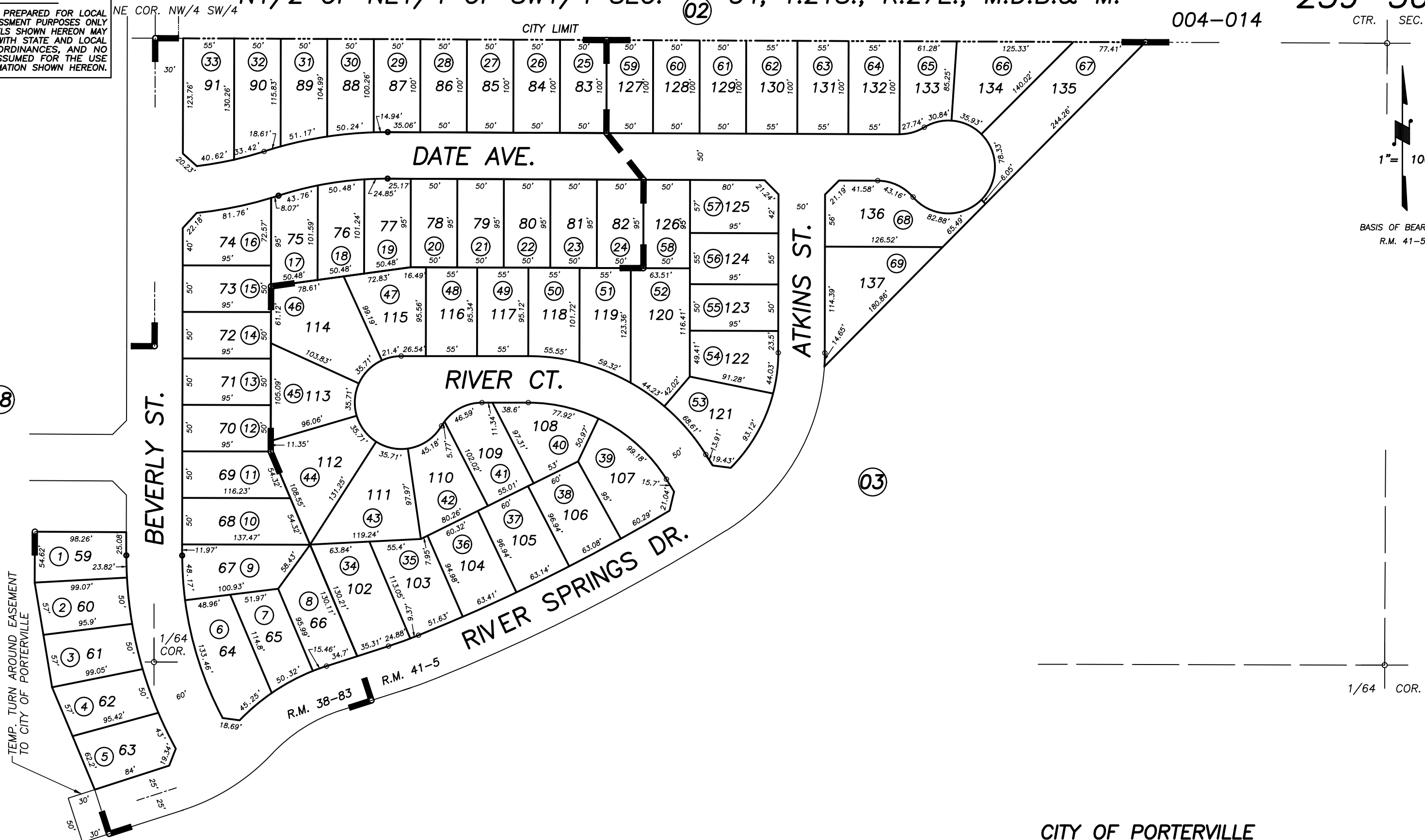
CITY LIMIT

1" = 100'

BASIS OF BEARINGS:
R.M. 41-5

28

03



TEMP. TURN AROUND EASEMENT TO CITY OF PORTERVILLE

BEVERLY ST.

RIVER CT.

RIVER SPRINGS DR.

ATKINS ST.

R.M. 38-83 R.M. 41-5

POR. RIVER SPRINGS PHASE 2, R.M. 38-83
 POR. RIVER SPRINGS PHASE THREE, 41-5

CITY OF PORTERVILLE
 ASSESSOR'S MAPS BK. 259 , PG. 30
 COUNTY OF TULARE, CALIFORNIA, U.S.A.

NOTE: Assessor's Parcel Numbers Shown in Circles (1) (123)
 Assessor's Block Numbers Shown in Ellipses

2004-0131097	12/14/2005	RBP
REVISION	DATE	TECH