

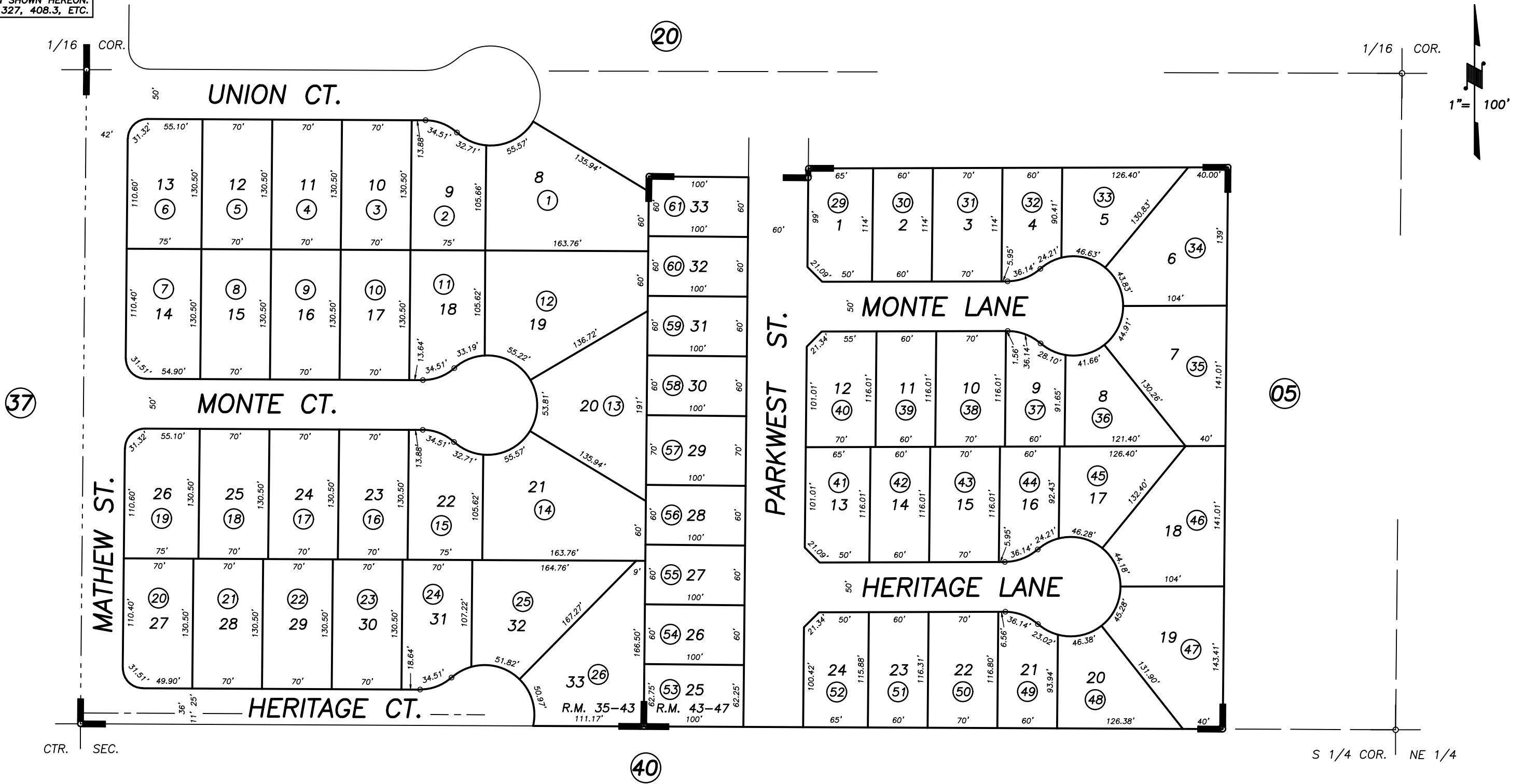
DISCLAIMER
 THIS MAP WAS PREPARED FOR LOCAL PROPERTY ASSESSMENT PURPOSES ONLY AND THE PARCELS SHOWN HEREON MAY NOT COMPLY WITH STATE AND LOCAL SUBDIVISION ORDINANCES, AND NO LIABILITY IS ASSUMED FOR THE USE OF THE INFORMATION SHOWN HEREON. R & T CODE SEC. 327, 408.3, ETC.

S1/2 OF SW1/4 OF NE1/4 SEC.33, T.21S., R.27E., M.D.B.&M.

Tax Area Codes **259-33**

004-060

004-117



POR. RIVERVIEW ESTATES UNIT NO. 2, R.M. 35-43
 RIVERVIEW ESTATES NO. 5, R.M. 43-47

CITY OF PORTERVILLE
 ASSESSOR'S MAPS BK. 259 , PG. 33
 COUNTY OF TULARE, CALIFORNIA, U.S.A.

NOTE: Assessor's Parcel Numbers Shown in Circles (1) (123)
 Assessor's Block Numbers Shown in Ellipses (1) (123)

UPDATE ADJ. PG.	03/13/2020	WAC
REVISION	DATE	TECH