

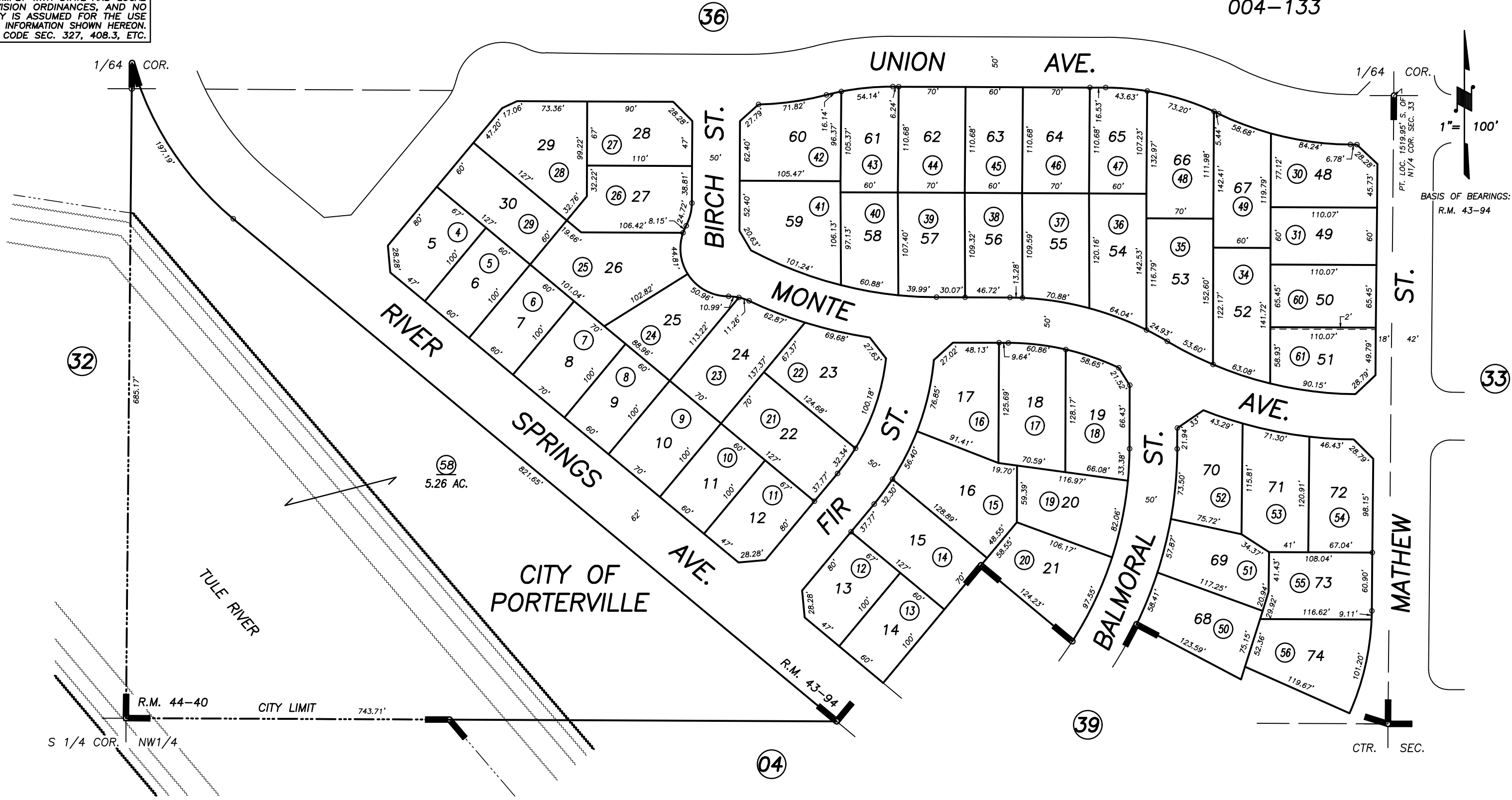
DISCLAIMER
 THIS MAP WAS PREPARED FOR LOCAL PROPERTY ASSESSMENT PURPOSES ONLY AND THE PARCELS SHOWN HEREON MAY NOT COMPLY WITH STATE AND LOCAL SUBDIVISION ORDINANCES, AND NO LIABILITY IS ASSUMED FOR THE USE OF THE INFORMATION SHOWN HEREON. R & T CODE SEC. 327, 408.3, ETC.

S1/2 OF SE1/4 OF NW1/4 SEC.33, T.21S., R.27E., M.D.B.&M.

Tax Area Codes **259-37**

004-130

004-133



POR. SUMMIT ESTATES TWO, PHASE ONE, R.M. 43-94
 POR. SUMMIT ESTATES TWO, PHASE TWO, R.M. 44-40

VICINITY OF PORTERVILLE
 ASSESSOR'S MAPS BK. 259 , PG. 37
 COUNTY OF TULARE, CALIFORNIA, U.S.A.

NOTE: Assessor's Parcel Numbers Shown in Circles (1) (123)
 Assessor's Block Numbers Shown in Ellipses

2020-0026970	9/4/2020	JDF
REVISION	DATE	TECH