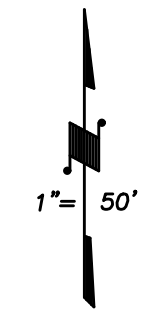
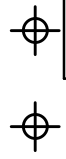
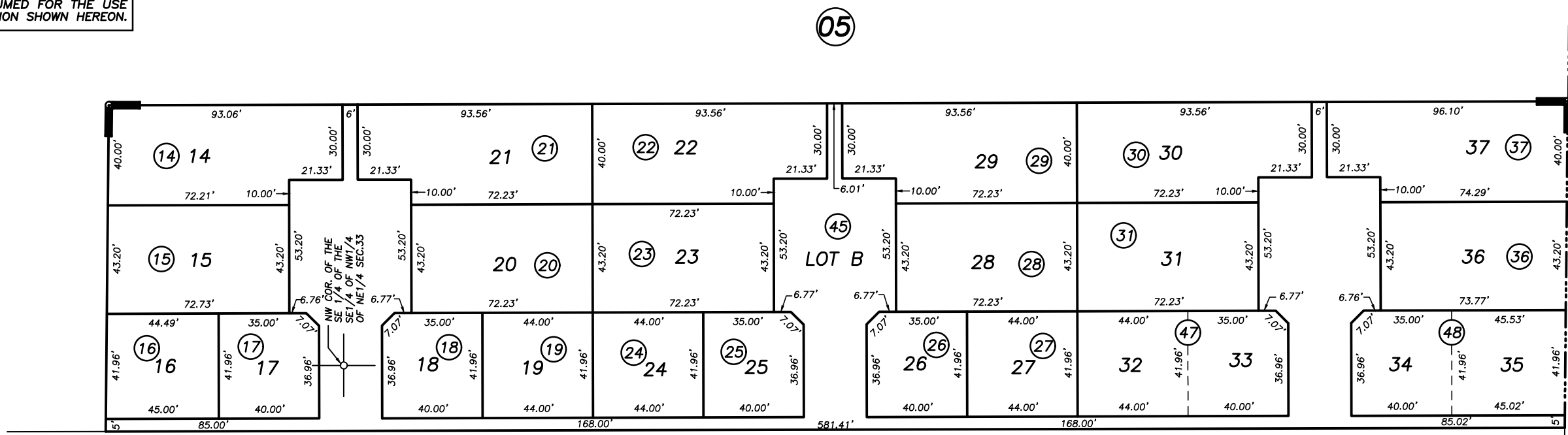


DISCLAIMER

THIS MAP WAS PREPARED FOR LOCAL PROPERTY ASSESSMENT PURPOSES ONLY AND THE PARCELS SHOWN HEREON MAY NOT COMPLY WITH STATE AND LOCAL SUBDIVISION ORDINANCES, AND NO LIABILITY IS ASSUMED FOR THE USE OF THE INFORMATION SHOWN HEREON.



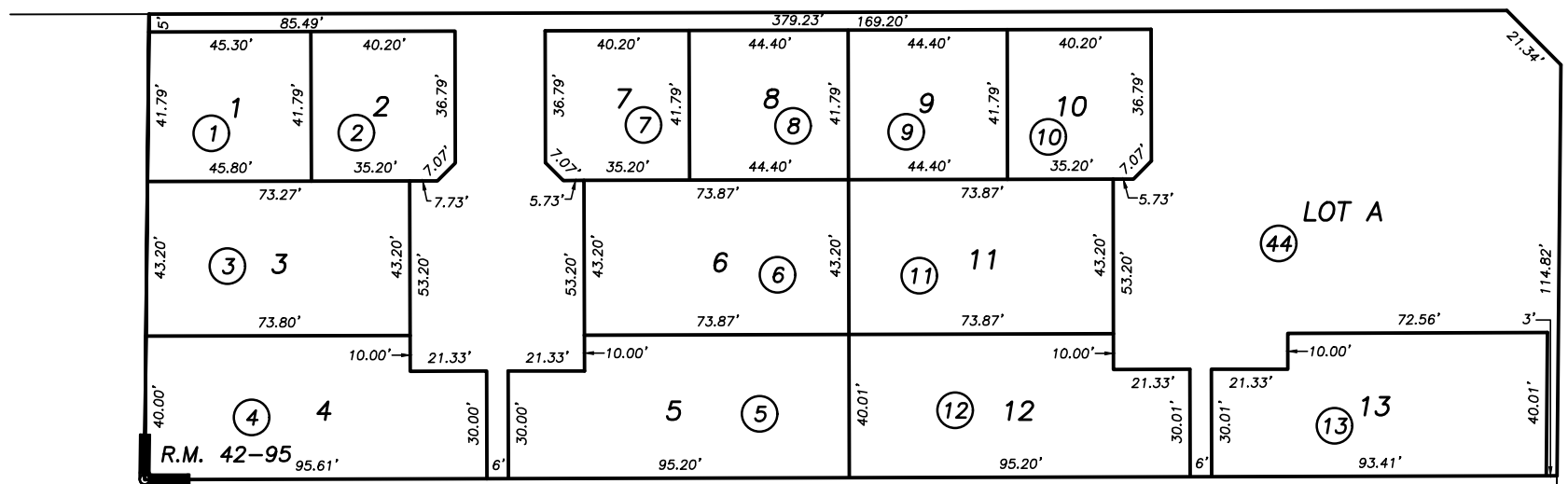
BASIS OF BEARINGS:
R.M. 42-95



ROBY AVE.

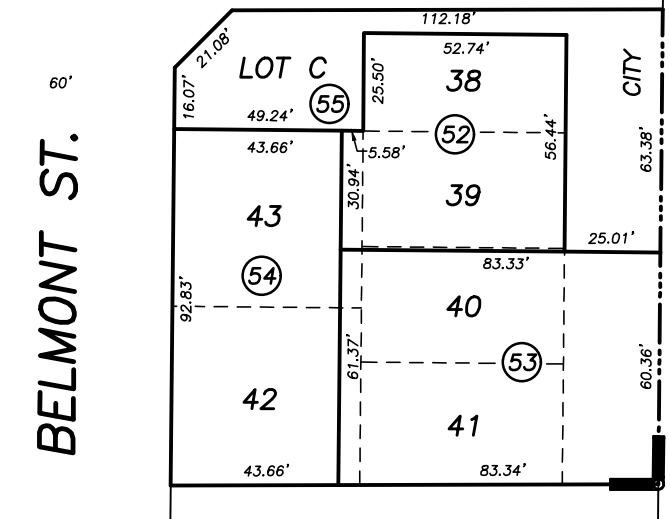
19

05



R.M. 42-95

19



BELMONT ST.

GARDEN COURT VILLAS, R.M. 42-95

CITY OF PORTERVILLE
ASSESSOR'S MAPS BK. 259 , PG. 38
COUNTY OF TULARE, CALIFORNIA, U.S.A.

NOTE: Assessor's Parcel Numbers Shown in Circles
Assessor's Block Numbers Shown in Elipses 1 123

2017-0053110	11/09/2018	CFG
REVISION	DATE	TECH