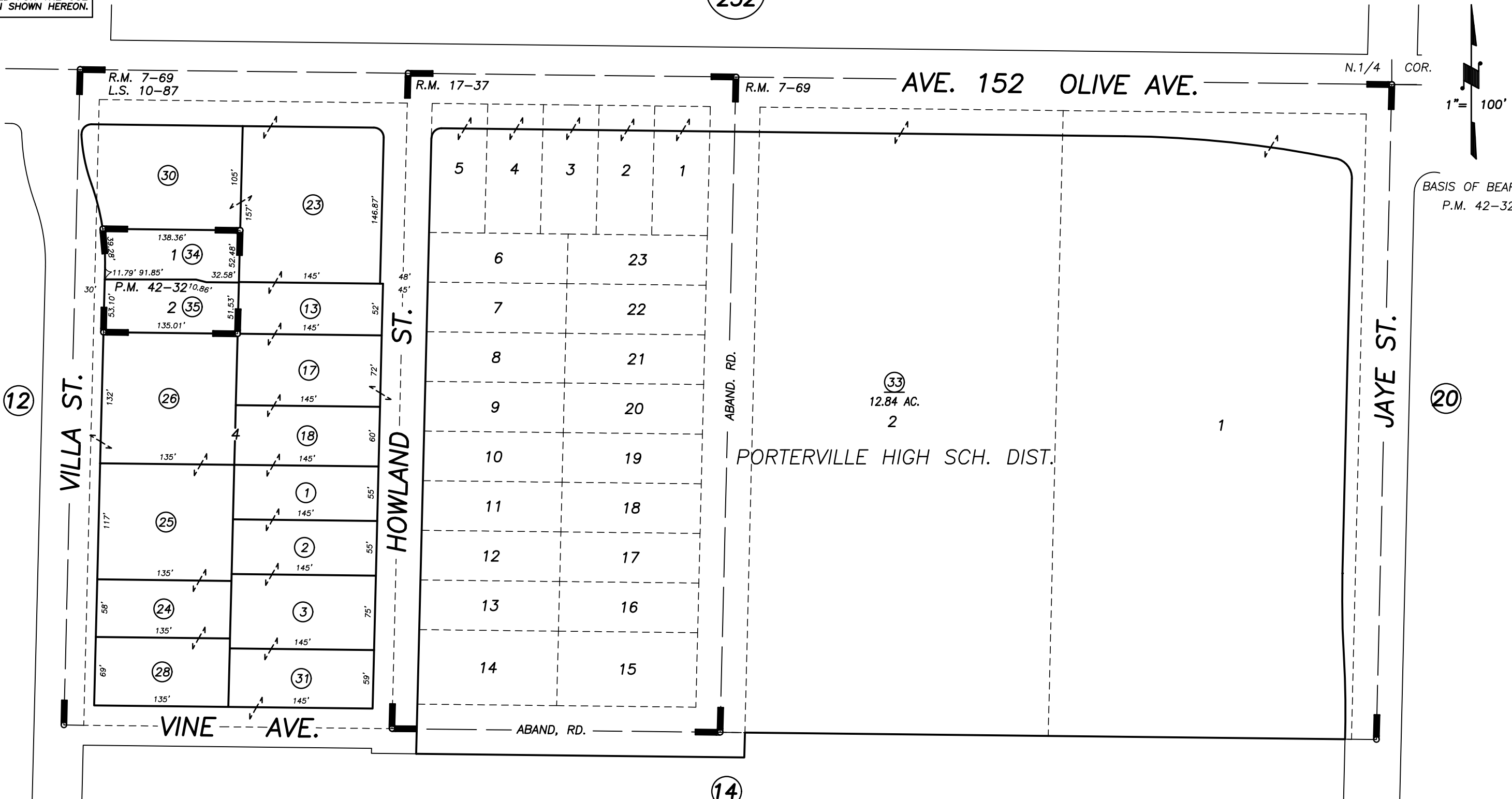


DISCLAIMER
 THIS MAP WAS PREPARED FOR LOCAL PROPERTY ASSESSMENT PURPOSES ONLY AND THE PARCELS SHOWN HEREON MAY NOT COMPLY WITH STATE AND LOCAL SUBDIVISION ORDINANCES, AND NO LIABILITY IS ASSUMED FOR THE USE OF THE INFORMATION SHOWN HEREON.

N 1/2 NE 1/4 OF NW 1/4 SEC. 35, T.21S., R.27E., M.D.B. & M.

Tax Area Code 260-13
 004-150

Bk. 252



POR. CORNELL BROS. SUB., R.M. 7-69
 R.G. HOWLAND SUB., R.M. 17-37
 POR. RECORD OF SURVEY, L.S. 10-87
 PARCEL MAP 4128, P.M. 42-32

CITY OF PORTERVILLE
 ASSESSOR'S MAPS BK. 260 , PG. 13
 COUNTY OF TULARE, CALIFORNIA, U.S.A.

NOTE: Assessor's Parcel Numbers Shown in Circles (1) (123)
 Assessor's Block Numbers Shown in Elipses

TRAC CHANGE ONLY	04/26/2011	KMS
REVISION	DATE	TECH