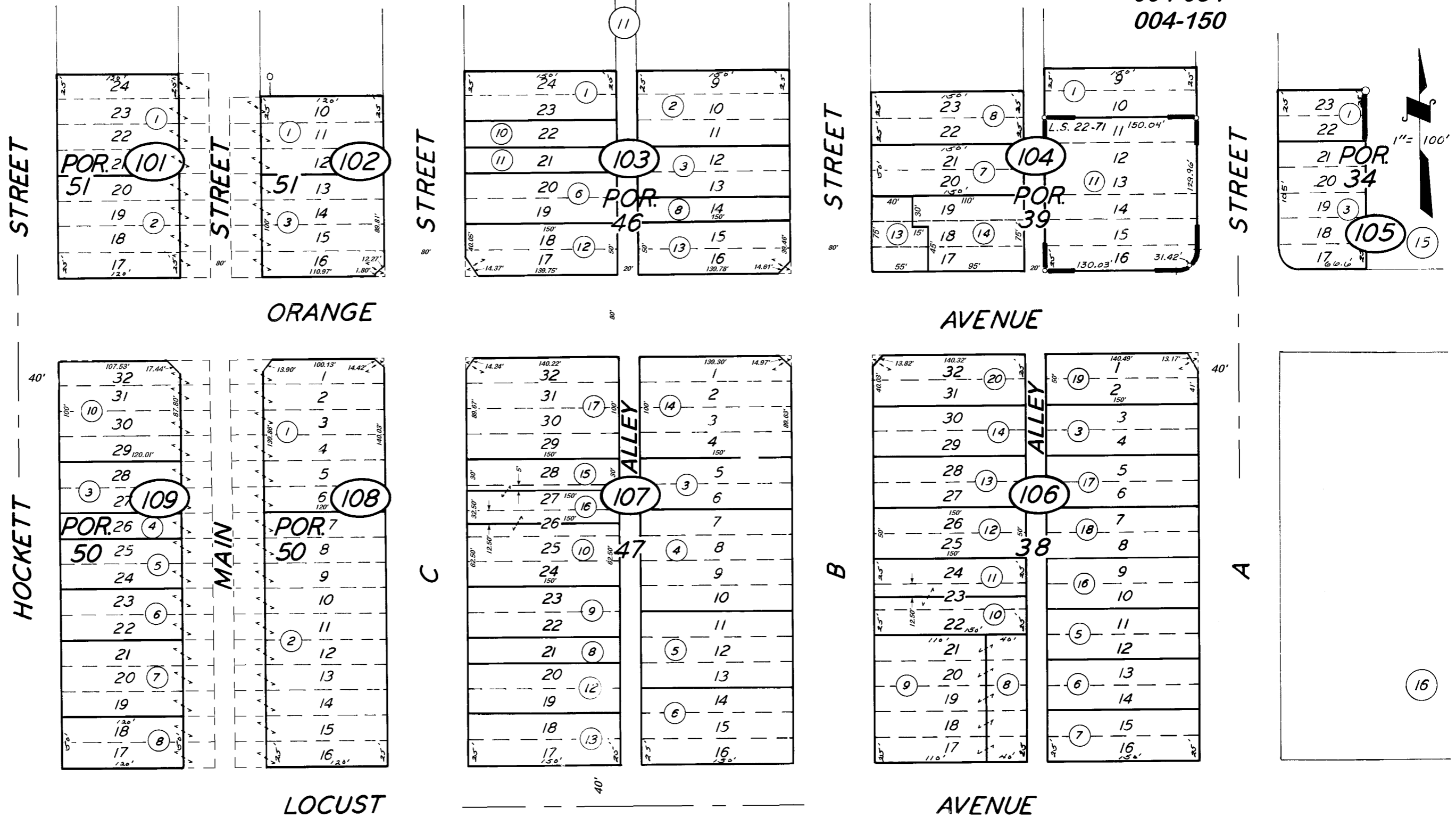


DISCLAIMER
THIS MAP WAS PREPARED FOR LOCAL PROPERTY ASSESSMENT PURPOSES ONLY. THE PARCELS SHOWN HEREON MAY NOT COMPLY WITH STATE AND LOCAL SUBDIVISION ORDINANCES. NO LIABILITY IS ASSUMED FOR THE USE OF THE INFORMATION HEREON. R & T CODE SEC. 327, 408.3, ETC.
REVISED: 07/14/2016
REASON: 2016-0027030
CAD TECH: ARL



POR. TOWN OF PORTERVILLE R.M. 1 - 107, R.M. 3-18
RECORD OF SURVEY L.S. 22-71

CITY OF PORTERVILLE
ASSESSOR'S MAPS BK. 261, PG. 10.
COUNTY OF TULARE, CALIF.

NOTE - ASSESSOR'S BLOCK NUMBERS SHOWN IN ELLIPSES
ASSESSOR'S PARCEL NUMBERS SHOWN IN CIRCLES

