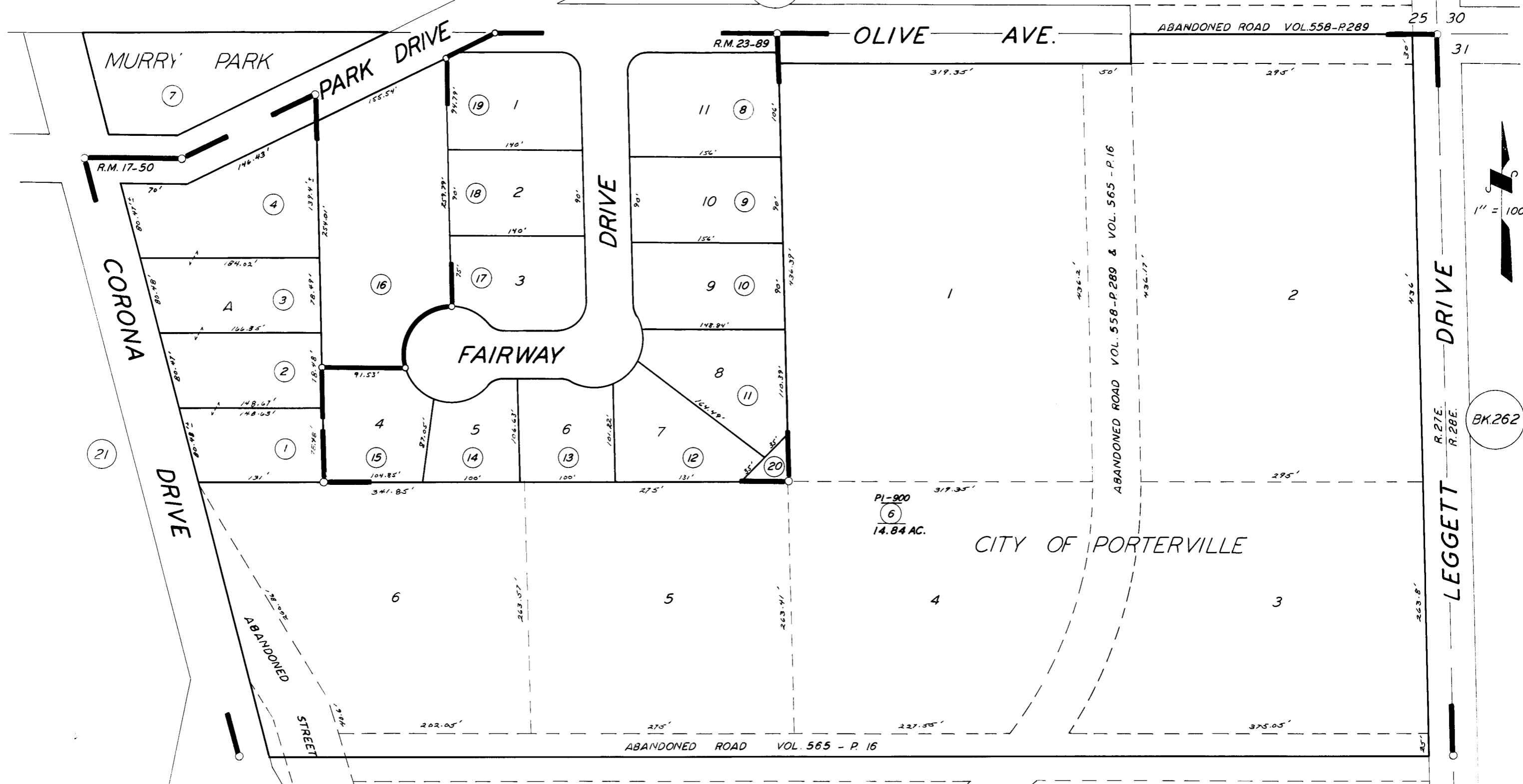


N'LY. POR. NE 1/4 OF NE 1/4

SEC. 36, T.21S., R.27E., M.D.B.&M. BK.253

TAX CODE AREA 4-000 261-22



POR. CORONA TRACT R.M. 17-50  
 FAIRWAY ESTATES R.M. 23-89

CITY OF PORTERVILLE  
 ASSESSOR'S MAPS BK. 261, PG. 22.  
 COUNTY OF TULARE, CALIF.

NOTE - ASSESSOR'S BLOCK NUMBERS SHOWN IN ELLIPSES  
 ASSESSOR'S PARCEL NUMBERS SHOWN IN CIRCLES