

DISCLAIMER

THIS MAP WAS PREPARED FOR LOCAL PROPERTY ASSESSMENT PURPOSES ONLY. THE PARCELS SHOWN HEREON MAY NOT COMPLY WITH STATE AND LOCAL SUBDIVISION ORDINANCES. NO LIABILITY IS ASSUMED FOR THE USE OF THE INFORMATION HEREON.

REVISED: 08/14/2012
REASON: 2012-0024512
CAD TECH: LLB

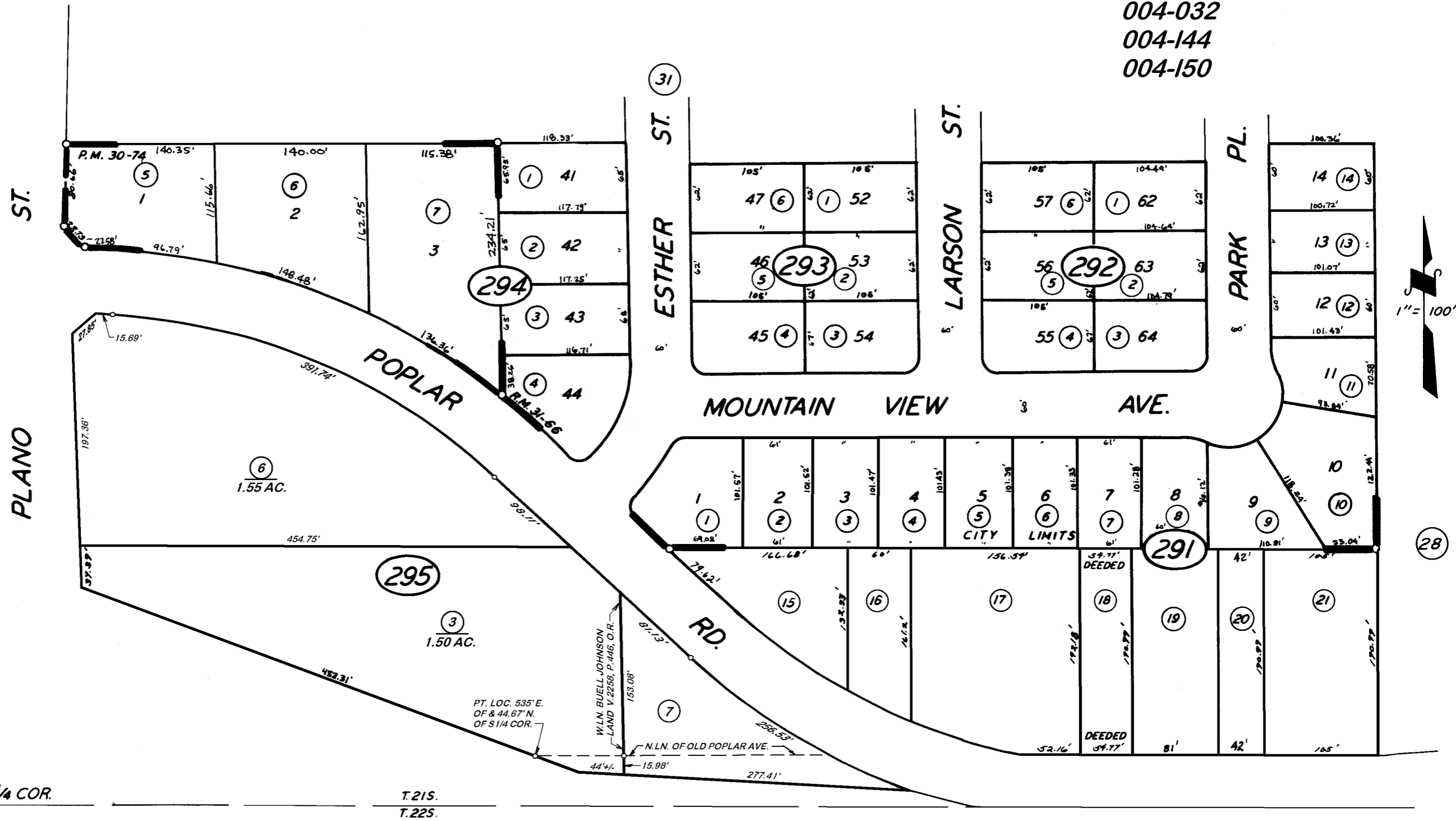
S 1/2 OF SW 1/4 OF SE 1/4 SEC. 36, T.21S., R.27E., M.D.B.&M.

TAX CODE AREA **261-29**

004-032

004-144

004-150



STATE HWY. 190

AVE. 144
POST MILE 16.99

POPLAR AVE.

POR. SUNRISE GARDENS (AMENDED), R.M. 31-66
PARCEL MAP 2973, P.M. 30-74

CITY OF PORTERVILLE
ASSESSOR'S MAPS BK. 261, PG. 29.
COUNTY OF TULARE, CALIF.

BK.270

NOTE — ASSESSOR'S BLOCK NUMBERS SHOWN IN ELLIPSES
ASSESSOR'S PARCEL NUMBERS SHOWN IN CIRCLES