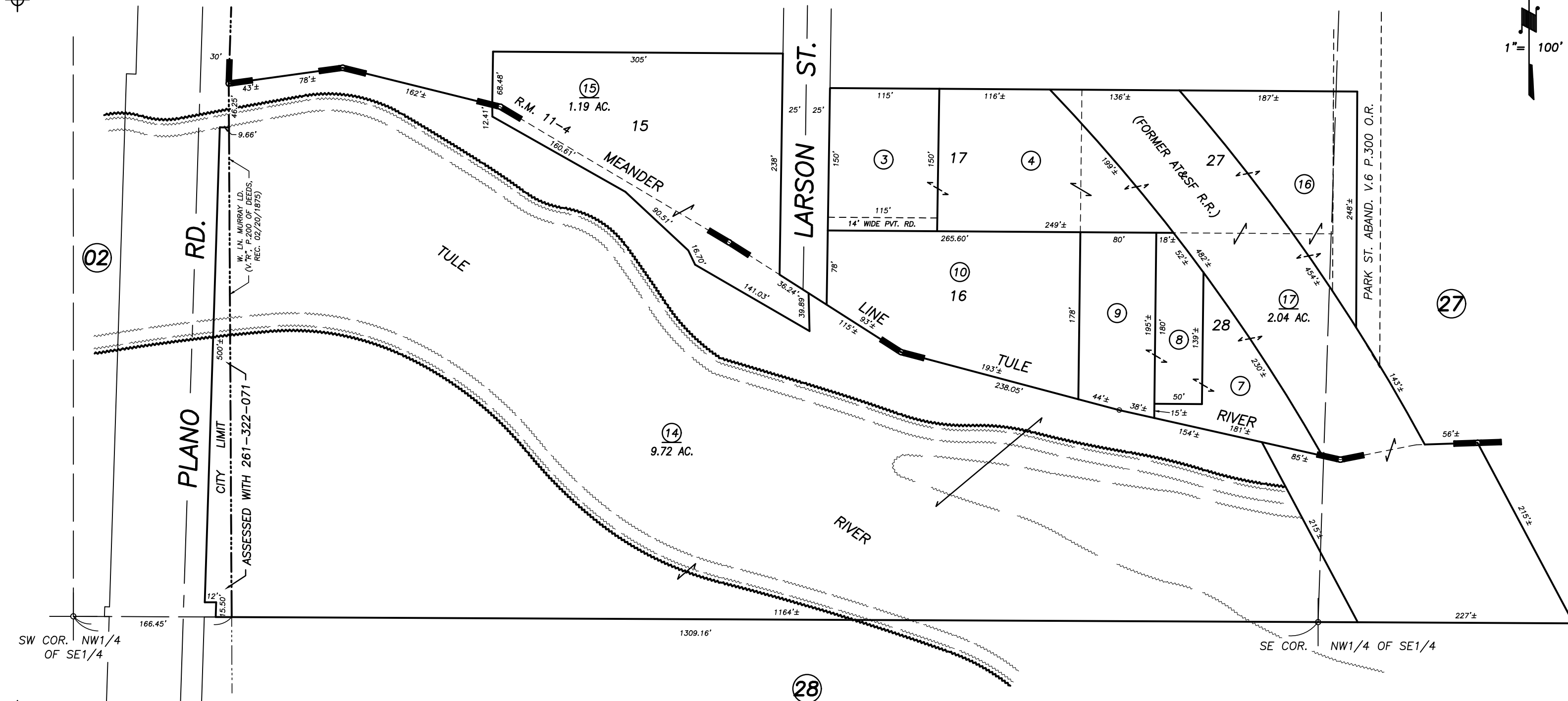
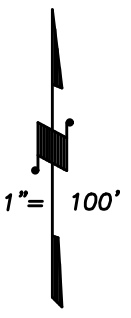
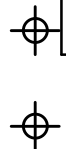


DISCLAIMER

THIS MAP WAS PREPARED FOR LOCAL PROPERTY ASSESSMENT PURPOSES ONLY AND THE PARCELS SHOWN HEREON MAY NOT COMPLY WITH STATE AND LOCAL SUBDIVISION ORDINANCES, AND NO LIABILITY IS ASSUMED FOR THE USE OF THE INFORMATION SHOWN HEREON.

POR. S1/2 OF NW1/4 OF SE1/4 SEC.36, T.21S., R.27E., M.D.B.&M.

Tax Area Codes 261-30
126-002



POR. MONTE VISTA FLAT, R.M. 11-4
POR. RECORD OF SURVEY, L.S. 13-70

CITY OF PORTERVILLE
ASSESSOR'S MAPS BK. 261 , PG. 30
COUNTY OF TULARE, STATE OF CALIFORNIA, U.S.A.

NOTE: Assessor's Parcel Numbers Shown in Circles (1) (123)
Assessor's Block Numbers Shown in Ellipses (1) (123)

2006-0122602	09/28/2012	RLW
REVISION	DATE	TECH