

E 1/2 OF SE 1/4 OF NE 1/4 SEC. 31, T.21S., R.28E., M.D.B.&M.

TAX CODE AREA 262-09

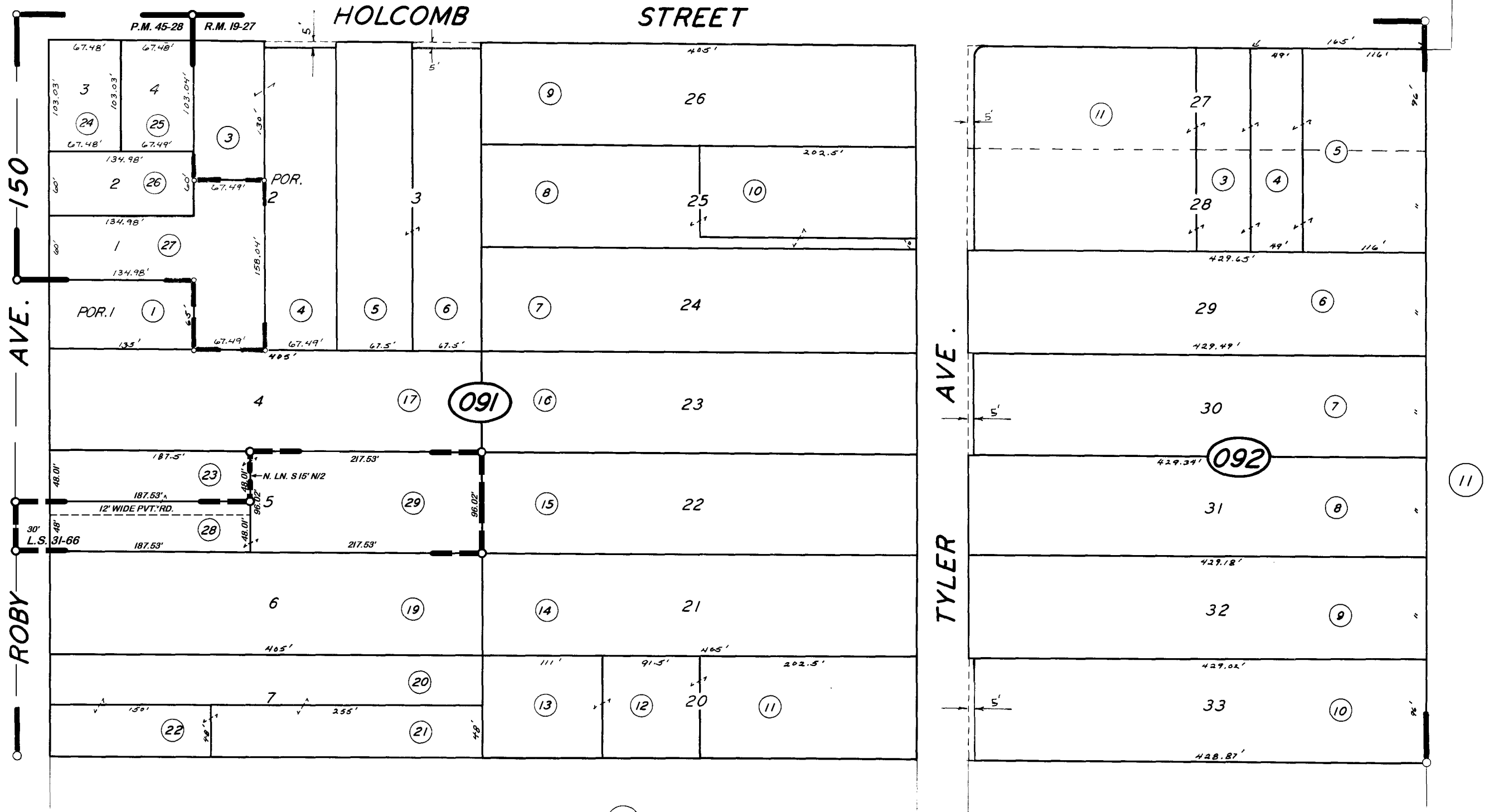
126-002

BK.263



DISCLAIMER
THIS MAP WAS PREPARED FOR LOCAL PROPERTY ASSESSMENT PURPOSES ONLY. THE PARCELS SHOWN HEREON MAY NOT COMPLY WITH STATE AND LOCAL SUBDIVISION ORDINANCES. NO LIABILITY IS ASSUMED FOR THE USE OF THE INFORMATION HEREON.

REVISED: 01/29/2013
REASON: 2012-0042472
CAD TECH: NFL



PARCEL MAP 4423 P.M. 45-28
POR. HOLCOMB SUB R.M. 19-27
RECORD OF SURVEY, L.S. 31-66

ASSESSOR'S MAPS BK. 262, PG. 09.

COUNTY OF TULARE, CALIF.

NOTE: ASSESSOR'S BLOCK NUMBERS SHOWN IN ELLIPSES
ASSESSOR'S PARCEL NUMBERS SHOWN IN CIRCLES

